

# Pavement Management Study

**MENDON, MASSACHUSETTS**

---

**PREPARED FOR**

Alan Tetreault  
Highway Surveyor  
Town of Mendon  
PO Box 51  
Mendon, MA 01756

**PREPARED BY**



2 Washington Square  
Union Station, Suite 219  
Worcester, MA 01604

APRIL 2016

# Table of Contents

<b>TABLE OF CONTENTS</b> .....	<b>II</b>
<b>TABLE OF TABLES</b> .....	<b>III</b>
<b>TABLE OF FIGURES</b> .....	<b>III</b>
<b>INTRODUCTION</b> .....	<b>4</b>
THEORY OF PAVEMENT MANAGEMENT .....	4
THE PAVEMENT DETERIORATION CURVE .....	5
<b>METHODOLOGY</b> .....	<b>6</b>
NETWORK IDENTIFICATION .....	6
PAVEMENT MANAGEMENT SECTION IDENTIFICATION .....	6
SURFACE DISTRESS ASSESSMENT .....	7
<i>PCI Defined</i> .....	7
THE FIVE TREATMENT BANDS .....	7
<i>Do Nothing</i> .....	8
<i>Routine Maintenance</i> .....	8
<i>Preventive Maintenance</i> .....	8
<i>Structural Improvement</i> .....	9
<i>Base Rehabilitation</i> .....	9
CUSTOMIZING REPAIR STRATEGIES .....	10
PREPARING BUDGET SCENARIOS .....	10
<i>Deterioration Curves</i> .....	10
<i>Strategy Table</i> .....	11
<i>Project Prioritization</i> .....	11
<b>EXISTING CONDITIONS</b> .....	<b>12</b>
TOWN MAINTAINED STREETS PAVEMENT CONDITIONS .....	12
BACKLOG OF WORK .....	14
GIS MAP OF CURRENT PAVEMENT CONDITIONS .....	15
<b>BUDGET ANALYSIS</b> .....	<b>17</b>
SCENARIOS EXPLORED .....	17
SUMMARY OF BUDGETS .....	18
<b>CONCLUDING REMARKS</b> .....	<b>19</b>
RECOMMENDATIONS – <i>PAVEMENT MANAGEMENT</i> .....	20
DEFINITIONS .....	23
<b>APPENDICES</b>	
APPENDIX A – PAVEMENT INVENTORY	
APPENDIX B – UNIT COST	
APPENDIX C – GLOSSARY	
APPENDIX D – PAVEMENT BACKLOG REPORT	
APPENDIX E – CURRENT FUNDING SCENARIO RESULTS	
APPENDIX F – \$473,000/YEAR SCENARIO	
APPENDIX G – MAINTAIN PCI FUNDING SCENARIO RESULTS	
APPENDIX H – IMPROVE PCI FUNDING SCENARIO RESULTS	
APPENDIX I – CRACKSEAL CANDIDATES	

# Table of Tables

Table 1 - Treatment Band Descriptions.....	8
Table 2 - Summary of Miles and Dollars of Outstanding Work.....	14

# Table of Figures

Figure 1 –Typical Pavement Deterioration Curve.....	5
Figure 2 - PCI Distribution.....	13
Figure 3 - Backlog Summary of Outstanding Work in Miles.....	14
Figure 4 – Backlog Summary of Outstanding Work in Dollars.....	15
Figure 5 - Pavement Condition Map.....	16
Figure 6 - Budget Scenario PCI Projection Chart.....	18

# 1

## Introduction

The Town of Mendon retained VHB in the summer of 2015 to undertake a comprehensive pavement management study. This update will assist the Town to determine paving budget needs, and assist with prioritizing pavement maintenance and rehabilitation needs.

Under the scope of this project, VHB performed a detailed inspection of the condition of the pavement on all Town maintained roads, and has created a database of this information which can be viewed, edited and analyzed using VHB's RoadManager™ software. The data is linked to a Geographic Information System (GIS) roadway centerline, so that thematic maps can be created to display any of the information in the database.

This report describes the steps taken in this project, the results of the field evaluations, and also compares the results of some potential roadway funding scenarios.

---

### Theory of Pavement Management

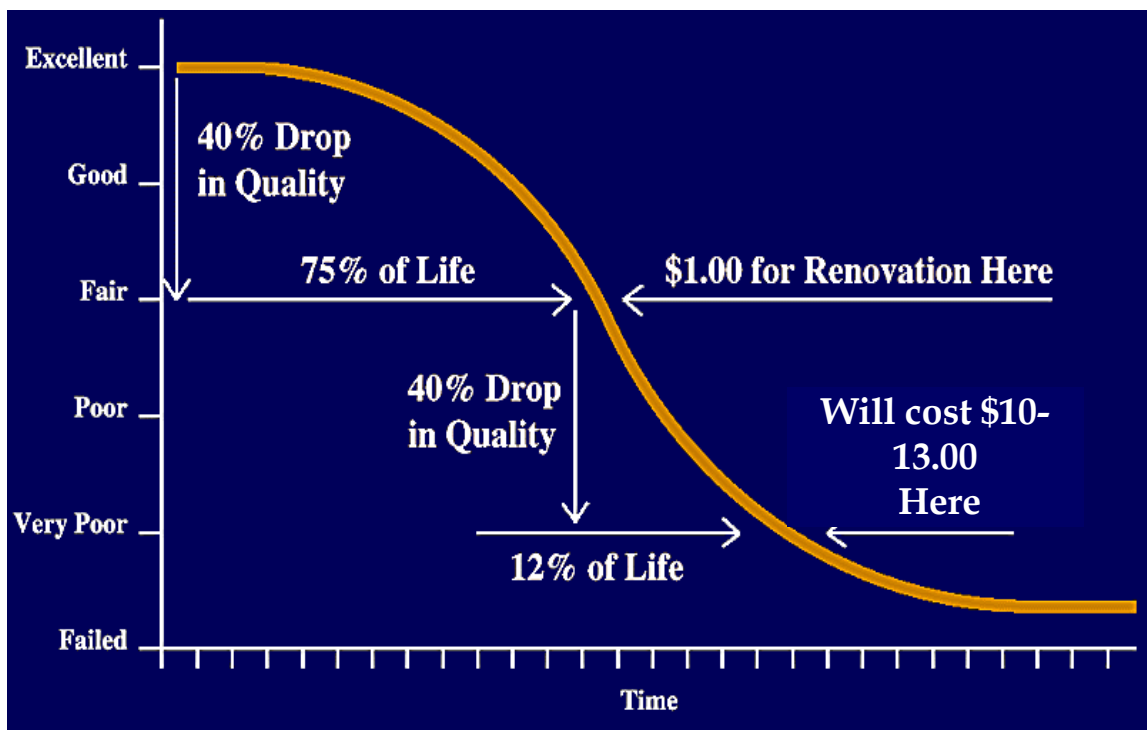
Pavement management is the practice of planning for pavement repairs and maintenance with the goal of maximizing the value and life of a pavement network.

To accomplish this, a community needs to have several repair techniques in its arsenal and the knowledge of when to apply each of these. This is where pavement management comes into play. With a comprehensive database of road conditions, the computer can model when to perform which repairs on a street network. Of course, engineering judgment is required to finalize any list of street repairs, as no computer model can take every variable analyzed in making a repair decision into account. The computer system is a great springboard to help a community start its repair program for each year and is an excellent method of storing the repair data.

## The Pavement Deterioration Curve

Below is a model of how a street's pavement deteriorates over time. Interpreting the curve, a street starts out in excellent condition when it is newly constructed. Midway through its life, a low cost repair such as crack seal and patch will cost approximately a dollar a square yard. It takes only a few years for the window of opportunity to perform this low cost maintenance to pass after which the road would need an overlay costing \$10 - \$13 per square yard. By performing timely maintenance, road conditions can be improved today, and then continue down the deterioration curve from a higher condition level, thereby extending the life of the road.

**Figure 1 –Typical Pavement Deterioration Curve**



# 2

## Methodology

VHB performed a detailed evaluation of the condition of nearly 59 miles of Town Accepted roads to build the pavement management system. The complete process of identifying the Town road network, evaluating pavement conditions, configuring the database for analysis purposes and finally, the analysis of future funding scenarios is described below.



### Network Identification

Network Identification builds an inventory of streets that describe the municipality's complete roadway network. The direction of travel, street length, width, one-way status, ownership, classification, zone and pavement type are among the items identified at this initial phase in the pavement management process. This integral step ensures the streets surveyed are the definitive set to be analyzed.



### Pavement Management Section Identification

Once the Network Identification is complete, the field work begins. Each street contains one or more pavement management sections. A pavement management section defines the limits of previous construction or maintenance activities within each street. Segments are defined by having the same width, typical distresses, one-way status, functional class, etc. The goal is to set up homogenous areas of pavement to aid in assigning the appropriate repair. A street may be one section, or it may be comprised of several pavement management sections, depending on its construction history.

---

## Surface Distress Assessment

For each pavement management section, the severity and extent of nine major pavement distresses are recorded, then entered into a weighted formula to arrive at a Pavement Condition Index (PCI). The distresses are categorized as base related or surface related distresses. Base related distresses indicate that the subsurface soil strength is inadequate for the existing traffic load. Streets that show significant base related distresses may need to have the subsurface soils fortified with stone to strengthen the structure and/or the street may need a significantly thicker layer of pavement. Surface related distresses are caused by age and weathering of the pavement. Streets that have predominantly surface related distresses are excellent candidates for maintenance sealing to inhibit further pavement oxidization (the main effect of aging). Streets with more of the base related distresses will most likely need some full depth patching, structural overlays or reclamation/reconstruction.

The four base related distresses are:

- potholing or non-utility patching
- alligator cracking
- distortion
- rutting

The five surface related distresses are:

- block cracking
- transverse or longitudinal cracking
- bleeding or polished aggregate
- surface wear or raveling
- shoving, slippage or corrugation

---

## PCI Defined

A PCI was generated for each inventoried pavement management section in Mendon using the surface distress data collected by VHB. PCI is measured on a scale of one hundred to zero, with one hundred representing a pavement in perfect condition and zero describing a road in impassable condition. Each type of observed pavement distress is assigned a deduct value based on the type, severity and extent of the defect. A more severe distress type, such as non-utility patching, has a higher deduct point value than a lesser distress such as transverse cracking. A weighted sum of the deduct points is then subtracted from the perfect "one hundred" road in order to generate a PCI for each roadway segment. In general, base related (pavement foundation) distresses are weighted more heavily than surface related distresses.

---

## The Five Treatment Bands

VHB's RoadManager™ software uses broad ranges to group the individual repair types into five major treatment bands. Treatment bands are a useful tool to summarize data on a Town-wide basis. An individual road segment will fall into a particular category based on the strategy table's output of repair types and will vary due to functional classification. The goal is to gain a broad understanding of the existing conditions in simple yet meaningful terms.

**Table 1 - Treatment Band Descriptions**

TREATMENT BAND	PCI*	Description
DO NOTHING	93-100	Excellent condition - in need of no maintenance.
ROUTINE MAINTENANCE	86-92	Good condition – may be in need of crack sealing or minor localized repair.
PREVENTIVE MAINTENANCE	73-85	Fair condition – pavement surface may be in need of surface sealing, full depth patch and/or crack sealing.
STRUCTURAL IMPROVEMENT	58-72	Deficient condition – pavement surface structure in need of added strength for existing traffic. Typical repairs are overlay with or without milling.
BASE REHABILITATION	0-57	Poor condition – in need of base improvement. Typical repairs are reclamation or full depth reconstruction.

\*These are only general PCI ranges for reference purposes, and represent only one pavement type. There are several fields considered by the strategy table when assigning repair types to each individual street.

---

## Do Nothing

The Do Nothing category exhibits roads which are in need of no maintenance. These roads are in excellent condition and existing distresses generally do not need to be addressed.

---

## Routine Maintenance

Routine maintenance activities are those which are taken to correct a specific pavement distress. Routine maintenance usually addresses localized pavement defects and includes activities such as:

- ❖ Full depth patching;
- ❖ Skim patching;
- ❖ Crack sealing.

---

## Preventive Maintenance

Preventive maintenance activities are those which are performed at planned intervals to protect and seal the pavement. Seals are designed to provide one or more of the following benefits:



- ❖ Prevent the intrusion of air and moisture;
- ❖ Fill small cracks and voids;
- ❖ Rejuvenate an oxidized binder;
- ❖ Provide a new wearing surface.

---

## **Structural Improvement**

Structural improvement includes the work necessary to restore the pavement to a condition that will allow it to perform satisfactorily for several years. Generally a structural improvement will consist of milling the existing pavement down and applying a new Hot Mix Asphalt Overlay allowing existing grades to be maintained. When the existing grade can be increased a new Hot Mix Asphalt course can simply be placed upon the existing surface.

Structural improvements also include the work necessary to prepare the pavement for an overlay, either with or without milling. The major activities involved in the preparation process are:

- ❖ Partial depth patching;
- ❖ Full depth patching;
- ❖ Joint and crack sealing;
- ❖ Grinding and milling;
- ❖ Hot Mix Asphalt Leveling Courses.

---

## **Base Rehabilitation**

Base rehabilitation utilizes one of two methods:

- ❖ Reclamation;
- ❖ Reconstruction.

Reclamation is the process of rehabilitating existing deteriorated pavements. The existing pavement and base, subbase, and possibly subgrade are pulverized and blended to create a homogenous pavement base. This reclaimed pavement base is then paved with a new Hot Mix Asphalt surface.

---

## Customizing Repair Strategies

VHB developed repair strategies to meet the Town's specific practices. VHB also refined repair unit costs. VHB's goal was to understand Mendon's decision-making process, and simulate that process in the budget analysis software based on the pavement condition and other criteria of each pavement section.

---

## Preparing Budget Scenarios

Once the roadway conditions are inventoried and analyzed, and the repair strategies are defined, the impact of various spending programs on the road network can be assessed. These studies can range from 1 to 20 years, however, for the purpose of this report, 5-year studies are used. The purpose of the budget planning process is to determine the impact of various spending levels to find a funding level that will best meet Mendon's needs. The budget module uses deterioration curves, unit costs, and the strategy table developed in the repair strategy definition phase to assign each street a repair type and associated cost for each year of the study. The module also assigns each street a benefit value that is used to determine which streets the software assumes will be repaired each year. **It is important to understand that RoadManager™ is a network-wide planning tool. Field verification and testing are recommended to confirm any street repair list generated.**

Pavement management deals with the life cycle of pavement structure and the various repair treatments to maintain the condition of the pavement. The pavement management system and the various repair types utilized in the study do not directly address other physical improvements associated with a roadway. Some of the items, which might be encountered on a roadway project, include the storm drainage system, traffic signals, minor traffic items, sidewalks and utility adjustments. In an attempt to develop a reasonable cost of various improvements, the overall scope of a typical project associated with the various repair types was estimated to develop a network level unit cost for the work. **The actual scope of work and costs will vary for the each individual roadway. Actual repair costs will need to be developed at the project level and may differ from costs utilized in this study.**

---

## Deterioration Curves

In order to properly plan for future repairs, the Budget Analysis module of RoadManager™ uses a deterioration curve to estimate the degradation of condition over time. As Mendon continues to build on its existing repair history database, the Town can refine the curve to more closely approximate local conditions.

---

## Strategy Table

RoadManager™ uses a table of repair strategies to assign specific road repair types to individual roadway segments. The repair strategy table incorporates PCI ranges as well as functional class and pavement type to simulate decisions consistent with Mendon repair practice and procedure. The strategy table was customized for Mendon to recommend the types of repairs that the Town has found to be best suited to Mendon's roadway network.

---

## Project Prioritization

The Budget Analysis module prioritizes needed system repairs based on the estimated "Benefit Value". The Benefit Value formula is calculated using variables representing traffic volume, repair service life, PCI, and unit repair costs for each pavement management section. For each plan year, the software prepares a future roadway condition projection, exhausts the assigned budget, and then produces an annual list of roads included in the repair program. The system also allows the user to enter an inflation rate to account for estimated increases in future year construction costs.

The Benefit Value prioritization process generally favors cost effective maintenance alternatives. Repair actions are typically delayed on those sections that require reconstruction or major rehabilitation because the benefits for dollars spent are generally lower than maintenance candidates. After the relatively good roads are "saved", improvements are directed towards the poorer arterial and collector roads. The formula used to prioritize projects is:

$$\textit{Benefit Value} = \frac{\textit{ADT} * \textit{Life of Repair}}{\textit{PCI} * \textit{Unit Cost of Repair}}$$

# 3

## Existing Conditions

---

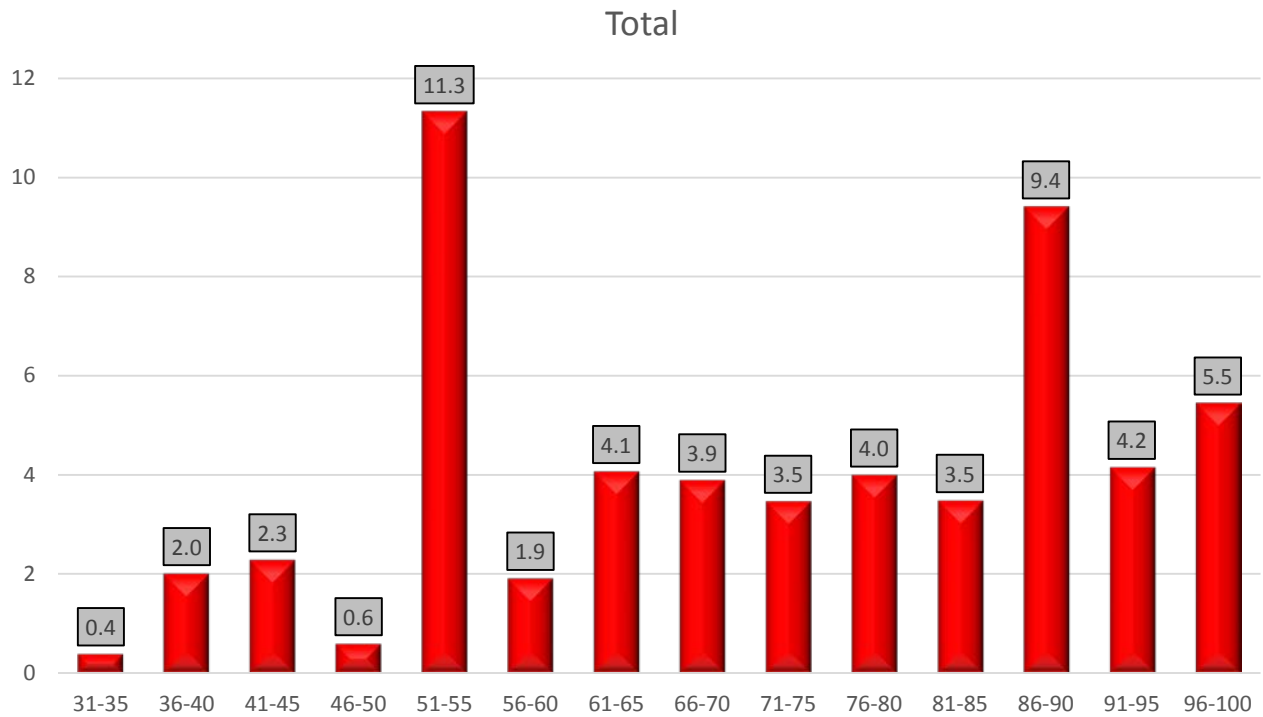
### Town Maintained Streets Pavement Conditions

VHB conducted the field evaluation of pavement conditions on approximately 56.5 miles of town maintained roadway in the summer of 2015. The average PCI for Mendon's road network at the time of the survey was a **72**. A PCI of 72 represents a road in fair condition that would soon be in need of resurfacing. Below are the PCI's of some comparable local Towns.

- Concord, MA - 81
- Framingham, MA - 76
- Grafton, MA - 73
- Newton, MA - 71
- Northborough, MA - 71
- Reading, MA - 73

The Town's average of 72 is made up of a road network of individual roads in all levels of condition. The following chart shows the distribution of miles of roadway in groups of 5 PCI point increments.

**Figure 2 - PCI Distribution**



The above chart shows that the town has roads in a wide variety of conditions, from excellent to very poor and failed. There is a large grouping of roads with PCI's between 51 and 55, which represent roads that will be in need of structural improvement or base rehabilitation. There is another large grouping of PCI's between 86 and 90, indicating that a number of roads are in good shape and need maintenance routine in nature, such as crack sealing or minor localized repair. The wide distribution of conditions indicate that a wide variety of maintenance and rehabilitation alternatives will be appropriate to most cost effectively maintain and improve the town's road network.

## Backlog of Work

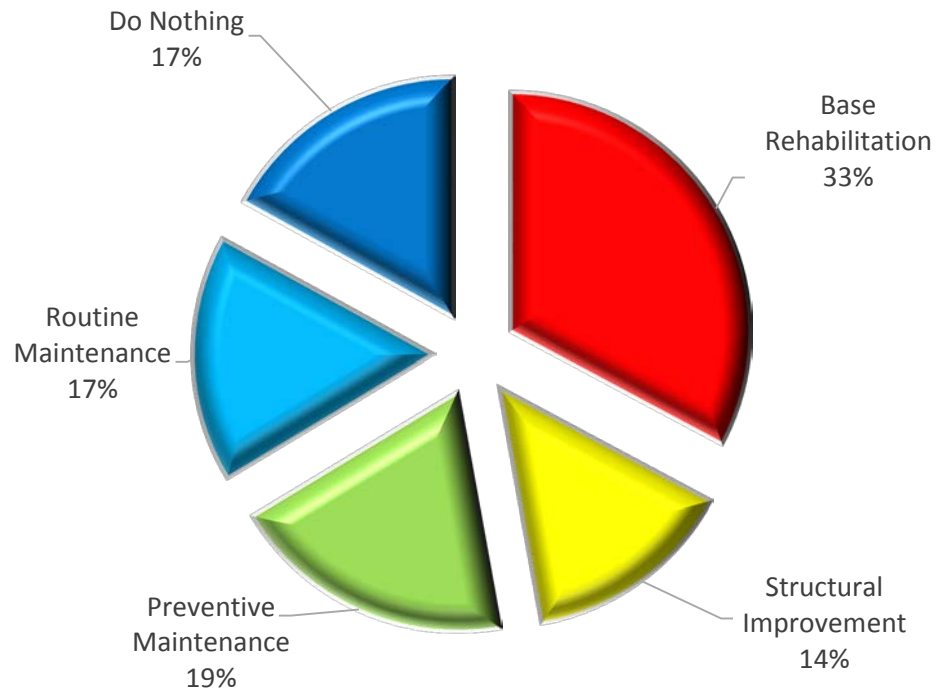
Applying the five treatment bands shown in Table 1 and the unit costs shown in Appendix B to Mendon's street network, the following table gives the miles and dollars associated with each treatment band for the conditions at the time of the evaluation.

**Table 2 - Summary of Miles and Dollars of Outstanding Work**

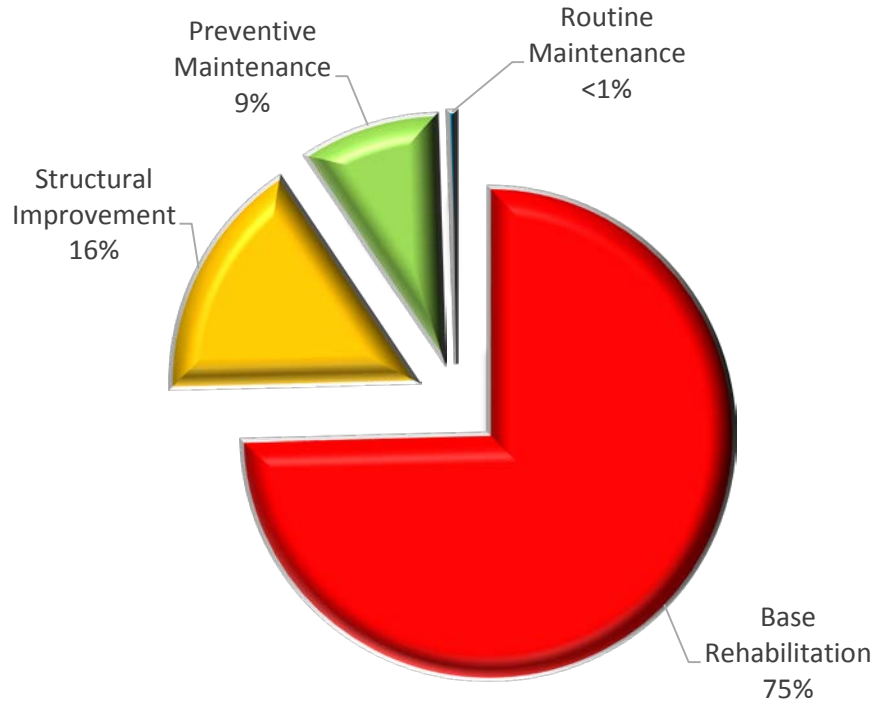
<b>Treatment band</b>	<b>Miles</b>	<b>Dollar Backlog</b>
Base Rehabilitation	18.6	\$6,356,000
Structural Improvement	8.1	\$1,365,000
Preventive Maintenance	10.8	\$759,000
Routine Maintenance	9.4	\$41,000
Do Nothing	9.6	\$0
<b>Totals:</b>	<b>56.5</b>	<b>\$8,521,000</b>

The following two figures present the above information graphically.

**Figure 3 - Backlog Summary of Outstanding Work in Miles**



**Figure 4 – Backlog Summary of Outstanding Work in Dollars**

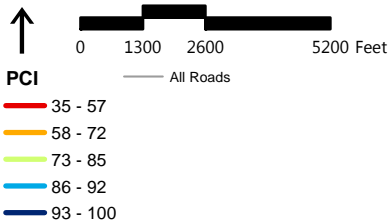
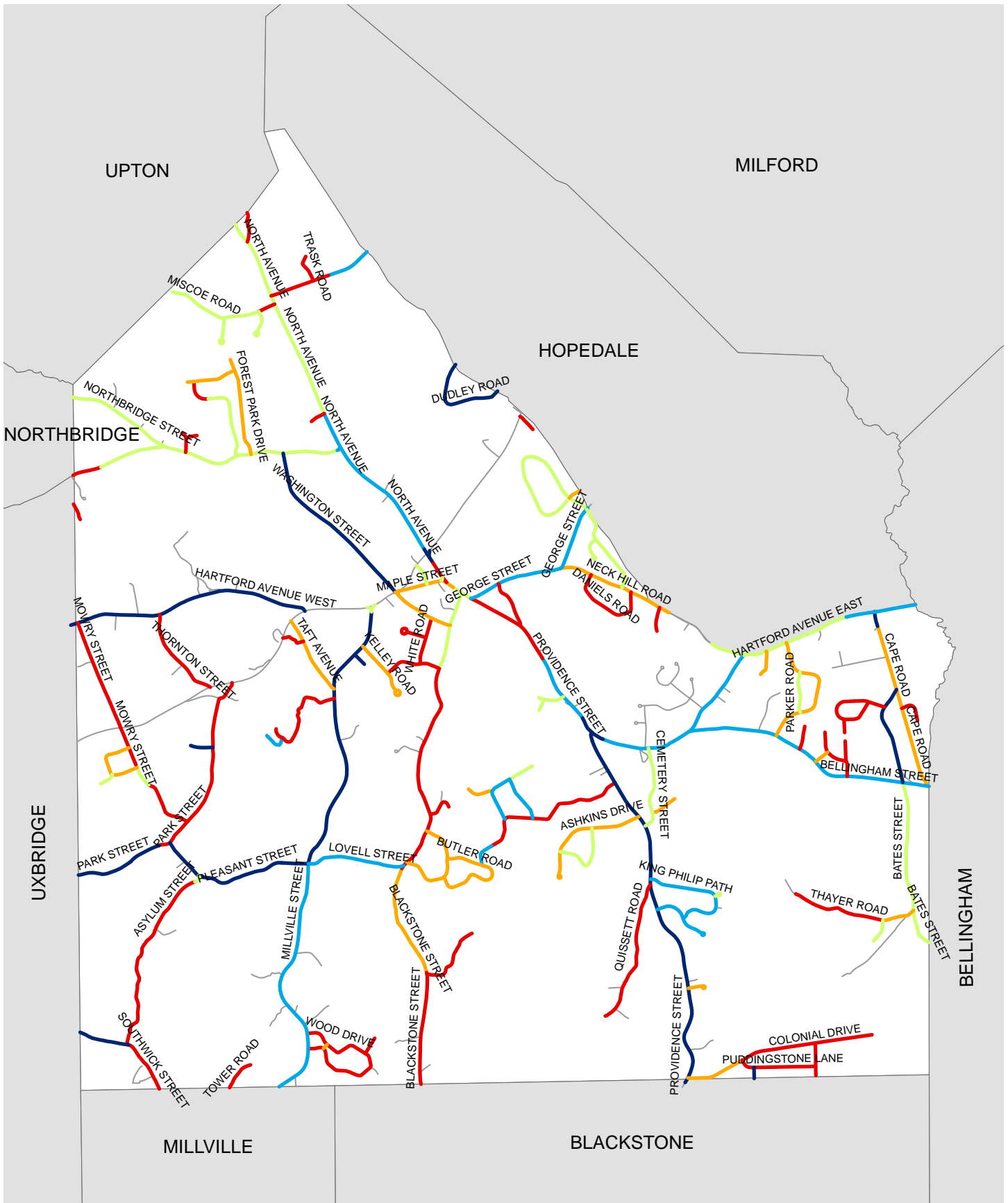


Figures 3 and 4 show that while base rehabilitation represents 33% of the streets in miles, it represents 75% of the total backlog of work. Base rehabilitation is the most expensive category of street repair. Also of note that approximately one quarter of the Town's miles are in need of structural treatments. It makes good fiscal sense to spend the funds to extend the lives of the large number of streets in need of maintenance.

---

## **GIS Map of Current Pavement Conditions**

By linking the Town's pavement database to a GIS roadway centerline, the Town has the ability to create thematic maps to help in the analysis and presentation of the information within the database. The Town can easily map current and projected pavement conditions based on numerous potential funding scenarios, and create plans for single or multi-year road programs. The map on the following page which display current and past pavement condition is one example of the type of mapping possible.



**Pavement Management Study**

Mendon, Massachusetts

**PCI Map**



# 4

## Budget Analysis

Mendon has a major investment in its 56.5 Town maintained road network. It is easy to forget that roadways are a community's single largest investment. Based on Mendon's unit cost for reconstruction, without considering signs, signals, curbing, or sidewalks, it would cost Mendon at least \$25 million in today's dollars to replace the existing Town maintained roadway infrastructure. The final phase of the pavement management process that VHB undertook for this report was the examination of various annual spending levels.

---

### Scenarios Explored

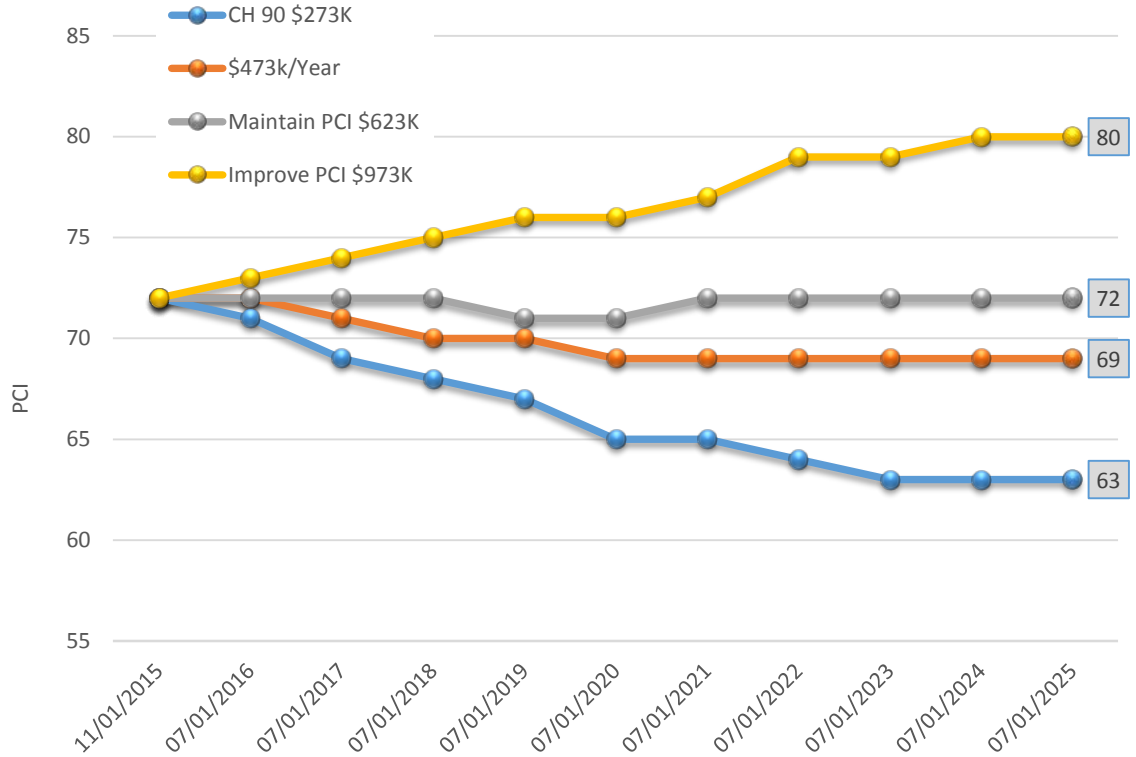
VHB compared the predicted effects of 3 funding scenarios.

- **Chapter 90 \$273,000 per Year**– Spending just the Town's current Chapter 90 allocation each year for the 10 year study period.
- **\$ 473,000 per Year**- The Town's expected Chapter 90 funding, plus \$200K allocated for capital repairs.
- **\$ 623,000 per Year**– The Town's expected Chapter 90 funding, plus \$350K allocated for capital repairs, which is expected to maintain the current average PCI.
- **\$ 973,000 per Year**– The Town's expected Chapter 90 funding, plus \$600K allocated for capital repair, which is expected to improve the current average PCI.

## Summary of Budgets

The following graph show the effects of the five funding levels analyzed on Mendon’s street network over the next 10 years.

**Figure 6 - Budget Scenario PCI Projection Chart**



It is apparent that Mendon’s Chapter 90 funding level will not maintain the current PCI of 72. Analysis shows that to maintain the current PCI of 72 the Town may have to supplement to estimated Chapter 90 funding with an additional \$350,000 per year of local funds. A total of \$973,000 per year would be needed to increase the PCI by 8 points to an average PCI of 80 in ten years.

## Concluding Remarks

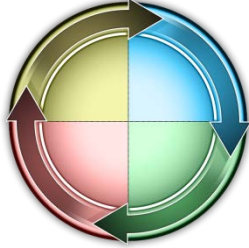
The Town of Mendon now has a pavement management system based on road condition data collected in 2015. The Mendon pavement management system gives Town decision-makers a picture of existing roadway infrastructure conditions and a dollar estimate to improve streets in poor condition while protecting those pavements currently in good condition.

The findings of this study reveal that there are quite a large number of roads in the Town of Mendon in poor condition that are in need of base or structural rehabilitation; hence, there is a significant backlog of work. In order to prevent a higher percentage of roads from falling into this condition, Mendon needs to continue performing maintenance on the roads in fair condition, while directing the larger percentage of funds to addressing failed and structurally deficient roadways.

**The Pavement Management System being implemented by the Town is a planning tool, with primary functions of determining the funding levels required to achieve Town wide condition goals, and to identify candidate road projects to achieve those goals. Any project list generated by the system needs to be reviewed by Town staff and adjusted based on numerous factors, including coordination with utility work, and geographic issues.**

---

## Recommendations – *Pavement Management*



- Budget adequate funds to achieve pavement condition goals
- Make timely maintenance repairs
- Repair localized base problems before applying an overlay
- Address major rehabilitation needs as funding allows
- **Develop multi-year road programs**
- Coordinate with local utilities to perform upgrades and repairs in advance of projected construction projects
- **Perform project level testing prior to major rehabilitation projects to ensure proper life of new pavement**
- **Provide for construction inspection at the plant and in the field to ensure quality material is provided and quality work is being performed**
- Update database to reflect work that is done (maintains accuracy of system)
- Update pavement conditions at a minimum of every 4 years or 25% per year
- Track specific and overall conditions periodically
- **Evaluate funding levels periodically**



# Appendix A

## Pavement Inventory

Alphabetical list of all town maintained pavement segments with street name, descriptive from/to, length, pavement type, functional class, and PCI

# Pavement Inventory Report

<u>Street Name</u>	<u>From Segment</u>	<u>To Segment</u>	<u>Pavement Type</u>	<u>Pavement Class</u>	<u>Length (ft)</u>	<u>PCI</u>
ASHKINS DRIVE	PROVIDENCE STREET	CUL DE SAC LOOP	Bituminous Concrete	Dead End/Subd.	3,737.00	66
ASYLUM STREET	PLEASANT STREET	300' S OF PLEASANT STREET	Bituminous Concrete	Local	300.50	78
ASYLUM STREET	300' S OF PLEASANT ST	100' S OF HOUSE #28	Bituminous Concrete	Local	1,979.50	39
ASYLUM STREET	100' S OF HOUSE #28	SOUTHWICK STREET	Bituminous Concrete	Local	3,699.61	40
ASYLUM STREET (Y INT)	PLEASANT STREET	ASYLUM STREET	Bituminous Concrete	Local	118.00	75
BARROWS ROAD	CAPE ROAD	CUL DE SAC	Bituminous Concrete	Dead End/Subd.	813.00	42
BATES STREET	CAPE ROAD	BELLINGHAM STREET	Bituminous Concrete	Collector	3,020.90	100
BATES STREET	BELLINGHAM STREET	THAYER ROAD	Bituminous Concrete	Collector	3,888.10	85
BATES STREET	THAYER ROAD	TOWN LINE	Bituminous Concrete	Collector	1,126.54	85
BELLINGHAM STREET	HARTFORD AVENUE EAST	150' E OF HARTFORD AVENUE	Bituminous Concrete	Collector	150.10	89
BELLINGHAM STREET	150' E OF HARTFORD AVENUE	CARBY DRIVE	Bituminous Concrete	Collector	3,912.90	86
BELLINGHAM STREET	CARBY DRIVE	CAPE ROAD	Bituminous Concrete	Collector	3,592.00	86
BICKNELL DRIVE	GEORGE STREET	240' N OF NECK HILL ROAD	Bituminous Concrete	Local	2,533.90	74
BICKNELL DRIVE	240' N OF NECK HILL ROAD	NECK HILL ROAD	Bituminous Concrete	Local	240.03	77
BLACKSTONE STREET	MAIN STREET	WESLEY DRIVE	Bituminous Concrete	Local	2,334.60	76
BLACKSTONE STREET	WESLEY DRIVE	1950' S OF WESLEY STREET	Bituminous Concrete	Local	1,956.50	38
BLACKSTONE STREET	1950' S OF WESLEY DRIVE	CARPENTER HILL ROAD (N)	Bituminous Concrete	Local	3,209.90	54
BLACKSTONE STREET	CARPENTER HILL ROAD (N)	100' S OF LOVELL LANE	Bituminous Concrete	Local	1,369.00	38
BLACKSTONE STREET	100' S OF LOVELL LANE	40' N OF INMAN HILL ROAD	Bituminous Concrete	Local	3,406.30	59
BLACKSTONE STREET	40' N OF INMAN HILL ROAD	TOWN LINE	Bituminous Concrete	Local	3,356.34	55
BLUEBERRY DRIVE	VINCENT ROAD €	VINCENT ROAD (W)	Bituminous Concrete	Local	2,954.00	87
BRACCI LANE	TOWN LINE	DEAD END	Bituminous Concrete	Dead End/Subd.	503.00	48
BUTLER ROAD	CARPENTER HILL ROAD (N)	CARPENTER HILL ROAD (S)	Bituminous Concrete	Local	3,447.00	63
CADMAN ROAD	NORTHBRIDGE ROAD	800' S OF LEONARD ROAD	Bituminous Concrete	Local	2,330.60	80
CADMAN ROAD	800' S OF LEONARD ROAD	LEONARD ROAD	Bituminous Concrete	Local	801.40	55
CALUMET CIRCLE	KING PHILLIP PATH	CUL DE SAC LOOP	Bituminous Concrete	Dead End/Subd.	297.00	85
CAPE ROAD	HARTFORD AVENUE EAST	450' S OF HARTFORD AVENUE	Bituminous Concrete	Arterial	449.50	95
CAPE ROAD	450' S OF HARTFORD AVENUE EA	BORROWS ROAD	Bituminous Concrete	Arterial	2,560.50	70
CAPE ROAD	BORROWS ROAD	TOWN LINE	Bituminous Concrete	Arterial	2,488.70	70
CARBY DRIVE	BELLINGHAM STREET	TERESA DRIVE	Bituminous Concrete	Local	458.00	58
CARPENTER HILL ROAD	BLACKSTONE STREET (N)	BLACKSTONE STREET (S)	Bituminous Concrete	Local	3,071.00	64
CATALPA LANE	THAYER ROAD	CUL DE SAC	Bituminous Concrete	Dead End/Subd.	719.00	77
CEMETERY STREET	HARTFORD AVENUE EAST	PROVIDENCE STREET	Bituminous Concrete	Collector	2,495.00	75
CHAPIN COURT	WOOD DRIVE	CUL DE SAC	Bituminous Concrete	Dead End/Subd.	539.00	55
COLONIAL DRIVE	PROVIDENCE STREET	PUDDINGSTONE LANE	Bituminous Concrete	Local	1,781.40	65
COLONIAL DRIVE	PUDDINGSTONE LANE	DEAD END	Bituminous Concrete	Dead End/Subd.	3,972.44	54

# Pavement Inventory Report

<u>Street Name</u>	<u>From Segment</u>	<u>To Segment</u>	<u>Pavement Type</u>	<u>Pavement Class</u>	<u>Length (ft)</u>	<u>PCI</u>
CRANBERRY COURT	BLUEBERRY DRIVE	CUL DE SAC	Bituminous Concrete	Dead End/Subd.	785.00	77
CRESTVIEW DRIVE	GEORGE STREET	2500' N OF GEORGE ST	Bituminous Concrete	Local	2,500.00	75
CRESTVIEW DRIVE	2500' N OF GEORGE ST	MANTONI DRIVE	Bituminous Concrete	Local	2,918.00	75
CROSS STREET	WOOD DR (N)	WOOD DRIVE (S)	Bituminous Concrete	Local	162.00	66
DANIELS ROAD	NECK HILL ROAD E	NECK HILL ROAD (W)	Bituminous Concrete	Local	2,695.00	45
DAVENPORT ROAD	MISCOE ROAD	CUL DE SAC LOOP	Bituminous Concrete	Dead End/Subd.	1,020.00	76
DEER HILL DRIVE	PROVIDENCE STREET	CUL DE SAC LOOP	Bituminous Concrete	Dead End/Subd.	673.00	72
DUDLEY ROAD	WESTCOTT ROAD	BALLOU ROAD	Bituminous Concrete	Local	2,870.00	94
EDWARD ROAD	BATES STREET	EDWARD ROAD	Bituminous Concrete	Local	3,010.00	54
ELM STREET	MAPLE STREET	HASTINGS STREET	Bituminous Concrete	Local	664.00	75
EMERSON STREET	BLACKSTONE STREET	HASTINGS STREET	Bituminous Concrete	Local	2,060.00	62
ESTY ROAD	NORTH AVENUE	CUL DE SAC	Bituminous Concrete	Dead End/Subd.	446.00	54
FOREST PARK DRIVE	NORTHBRIDGE ROAD	CUL DE SAC	Bituminous Concrete	Dead End/Subd.	2,936.00	65
FREEMAN PLACE	PARK STREET	CUL DE SAC	Bituminous Concrete	Dead End/Subd.	675.00	98
GASKILL STREET	GEORGE STREET	PROVIDENCE STREET	Bituminous Concrete	Local	1,474.00	54
GEORGE STREET	PROVIDENCE STREET	NECK HILL ROAD	Bituminous Concrete	Cut Through	2,845.40	86
GEORGE STREET	NECK HILL ROAD	MILL STREET	Bituminous Concrete	Cut Through	2,024.54	88
HARRINGTON STREET	MILFORD STREET	DEAD END	Bituminous Concrete	Dead End/Subd.	552.00	57
HARTFORD AVENUE EAST	PROVIDENCE STREET	400' EAST OF PROVIDENCE STR	Bituminous Concrete	Collector	401.80	95
HARTFORD AVENUE EAST	400' E OF PROVIDENCE STREET	WARFIELD ROAD	Bituminous Concrete	Collector	3,565.20	88
HARTFORD AVENUE EAST	WARFIELD ROAD	NECK HILL ROAD	Bituminous Concrete	Collector	2,029.10	88
HARTFORD AVENUE EAST	NECK HILL ROAD	500' E OF MENFI WAY	Bituminous Concrete	Collector	3,294.50	84
HARTFORD AVENUE EAST	500' EAST OF MENFI WAY	TOWN LINE	Bituminous Concrete	Collector	2,331.06	90
HARTFORD AVENUE WEST	UXBRIDGE ROAD	OLD SAWMILL RD	Bituminous Concrete	Collector	2,657.50	95
HARTFORD AVENUE WEST	OLD SAWMILL RD	THORNTON STREET	Bituminous Concrete	Collector	1,962.50	95
HARTFORD AVENUE WEST	THORNTON STREET	TOWN LINE	Bituminous Concrete	Collector	2,721.70	95
HOPEDALE STREET	NORTH AVENUE	460' EAST OF TRASK ROAD	Bituminous Concrete	Local	1,815.40	48
HOPEDALE STREET	460' EAST OF TRASK ROAD	TOWN LINE	Bituminous Concrete	Local	1,386.60	87
INMAN HILL ROAD	BLACKISTONE STREET	DEAD END	Bituminous Concrete	Dead End/Subd.	2,083.00	35
JOSEPH ROAD	EDWARD ROAD	CUL DE SAC	Bituminous Concrete	Dead End/Subd.	395.00	53
KELLEY ROAD	MILLVILLE STREET	CUL DE SAC LOOP	Bituminous Concrete	Dead End/Subd.	2,179.00	64
KING PHILIP PATH	PROVIDENCE STREET	MASSASOIT WAY	Bituminous Concrete	Local	3,588.00	87
KINSLEY LANE	MILLVILLE STREET	DEAD END	Bituminous Concrete	Dead End/Subd.	3,052.00	51
KINSLEY LANE (EXT)	KINSLEY LANE	DEAD END	Bituminous Concrete	Dead End/Subd.	727.00	88
LAPHAM COURT	BICKNELL DRIVE	CUL DE SAC LOOP	Bituminous Concrete	Dead End/Subd.	842.00	76
LEONARD ROAD	FOREST PARK DRIVE	CUL DE SAC	Bituminous Concrete	Dead End/Subd.	1,483.00	65

# Pavement Inventory Report

<u>Street Name</u>	<u>From Segment</u>	<u>To Segment</u>	<u>Pavement Type</u>	<u>Pavement Class</u>	<u>Length (ft)</u>	<u>PCI</u>
LEONE LANE	LOWELL DRIVE	CUL DE SAC	Bituminous Concrete	Dead End/Subd.	333.00	56
LORI LANE	SANDRA CIRCLE	CUL DE SAC	Bituminous Concrete	Dead End/Subd.	465.00	77
LOVELL STREET	BLACKISTONE STREET	MILLVILLE STREET	Bituminous Concrete	Local	2,951.00	88
LOWELL DRIVE	NORTHBRIDGE ROAD	CUL DE SAC	Bituminous Concrete	Dead End/Subd.	621.00	55
LUNDVALL ROAD	ASHKINS DRIVE (N)	ASHKINS DRIVE (S)	Bituminous Concrete	Local	2,125.00	75
MAIN STREET	HASTINGS STREET	260' S OF HASTINGS STREET	Bituminous Concrete	Collector	260.00	95
MAIN STREET	260' S OF HASTINGS ST	MAPLE STREET	Bituminous Concrete	Collector	785.00	55
MAIN STREET	MAPLE STREET	250' S OF MAPLE STREET	Bituminous Concrete	Local	248.30	63
MAIN STREET	250' S OF MAPLE STREET	GEORGE STREET	Bituminous Concrete	Local	624.70	76
MAIN STREET (Y INT)	MAIN STREET	MILFORD STREET	Bituminous Concrete	Local	208.00	99
MANTONI DRIVE	CRESTVIEW DRIVE	TOWN LINE	Bituminous Concrete	Local	397.00	67
MAPLE LEAF LANE	PUDDINGSTONE LANE	DEAD END	Bituminous Concrete	Dead End/Subd.	332.00	95
MAPLE STREET	HASTINGS STREET	MAIN STREET	Bituminous Concrete	Collector	1,499.00	58
MAPLE STREET (Y INT)	MAIN STREET	MAPLE STREET	Bituminous Concrete	Collector	125.00	79
MARY DRIVE	BELLINGHAM STREET	CUL DE SAC	Bituminous Concrete	Dead End/Subd.	1,057.00	56
MASSASOIT WAY	PROVIDENCE STREET	CUL DE SAC LOOP	Bituminous Concrete	Dead End/Subd.	1,929.00	88
MEGAN COURT	WHITE ROAD	CUL DE SAC LOOP	Bituminous Concrete	Dead End/Subd.	1,108.00	54
METCALF ROAD	MISCOE ROAD	CUL DE SAC LOOP	Bituminous Concrete	Dead End/Subd.	1,033.00	77
MILL RIVER DRIVE	HARTFORD AVENUE EAST	CUL DE SAC	Bituminous Concrete	Dead End/Subd.	770.00	67
MILLBROOK DRIVE	BELLINGHAM STREET	CUL DE SAC	Bituminous Concrete	Dead End/Subd.	700.00	55
MILLVILLE STREET	UXBRIDGE ROAD	MILLVILLE STREET	Bituminous Concrete	Collector	432.70	76
MILLVILLE STREET	Y-INTERSECTION	WILLOWBROOK LANE	Bituminous Concrete	Collector	4,234.30	94
MILLVILLE STREET	WILLOWBROOK LANE	LOVELL ROAD	Bituminous Concrete	Collector	4,015.30	94
MILLVILLE STREET	LOVELL STREET	2085' N OF WOOD DRIVE	Bituminous Concrete	Collector	3,437.40	89
MILLVILLE STREET	2085' N OF WOOD DRIVE	TOWN LINE	Bituminous Concrete	Collector	4,082.30	89
MISCOE ROAD	NORTH AVENUE	DAVENPORT ROAD	Bituminous Concrete	Local	520.00	56
MISCOE ROAD	DAVENPORT ROAD	DEAD END	Bituminous Concrete	Dead End/Subd.	2,836.00	76
MORRISON DRIVE	PROVIDENCE STREET	CUL DE SAC	Bituminous Concrete	Dead End/Subd.	776.00	78
MORRISON DRIVE (EXT)	MORRISON DRIVE	CUL DE SAC	Bituminous Concrete	Dead End/Subd.	360.00	82
MOWRY STREET	UXBRIDGE ROAD	HARTFORD AVENUE WEST	Bituminous Concrete	Local	3,376.00	55
MOWRY STREET	UXBRIDGE STREET	90' N OF SANDRA CIRCLE (S)	Bituminous Concrete	Local	1,218.70	44
MOWRY STREET	90' N OF SANDRA CIRCLE (S)	630' S OF SANDRA CIRCLE (S)	Bituminous Concrete	Local	717.20	85
MOWRY STREET	630' S OF SANDRA CIRCLE (S)	PARK STREET	Bituminous Concrete	Local	1,729.10	43
MYRTLE STREET	MILLVILLE STREET	DEAD END	Bituminous Concrete	Dead End/Subd.	409.00	95
NECK HILL ROAD	GEORGE STREET	325' E OF OAK HILL ROAD	Bituminous Concrete	Cut Through	3,593.30	66
NECK HILL ROAD	1000' W OF HARTFORD AVE EAST	HARTFORD AVENUE EAST	Bituminous Concrete	Cut Through	1,042.00	75



# Pavement Inventory Report

<u>Street Name</u>	<u>From Segment</u>	<u>To Segment</u>	<u>Pavement Type</u>	<u>Pavement Class</u>	<u>Length (ft)</u>	<u>PCI</u>
NELSON COURT	BLUEBERRY DRIVE	CUL DE SAC	Bituminous Concrete	Dead End/Subd.	779.00	63
NIPMUC DRIVE	UXBRIDGE ROAD	PARK STREET	Bituminous Concrete	Local	616.00	56
NORTH AVENUE	MAIN STREET	150' N OF MAIN STREET	Bituminous Concrete	Collector	153.00	95
NORTH AVENUE	150' N OF MAIN STREET	WESTERN CIRCLE AVENUE	Bituminous Concrete	Collector	1,946.30	88
NORTH AVENUE	WESTERN CIRCLE AVENUE	ESTY ROAD	Bituminous Concrete	Collector	3,182.10	88
NORTH AVENUE	ETSY ROAD	MISCOE ROAD	Bituminous Concrete	Collector	3,594.60	76
NORTH AVENUE	MISCOE ROAD	TOWN LINE	Bituminous Concrete	Collector	2,681.96	76
NORTHBRIDGE STREET	NORTH AVENUE	FOREST PARK DRIVE	Bituminous Concrete	Collector	2,781.00	85
NORTHBRIDGE STREET	FOREST PARK DRIVE	LOWELL DRIVE	Bituminous Concrete	Collector	2,087.80	85
NORTHBRIDGE STREET	LOWELL DRIVE	TOWN LINE	Bituminous Concrete	Collector	3,867.77	84
NORTHBRIDGE STREET (Y I	NORTHBRIDGE ROAD	NORTH AVENUE	Bituminous Concrete	Collector	155.00	88
OAK HILL ROAD	NECK HILL ROAD	CUL DE SAC	Bituminous Concrete	Dead End/Subd.	721.00	57
OLD TAFT AVENUE	TAFT AVENUE	UXBRIDGE ROAD	Bituminous Concrete	Local	698.00	54
PARK STREET	NIPMUC DRIVE	FREEMAN PLACE	Bituminous Concrete	Local	1,509.90	54
PARK STREET	FREEMAN PLACE	330' W OF PLEASANT STREET	Bituminous Concrete	Local	3,615.10	53
PARK STREET	330' W OF PLEASANT STREET	TOWN LINE	Bituminous Concrete	Local	2,660.00	100
PARKER ROAD	TALBOTT FARM DRIVE (N)	TALBOTT FARM DRIVE (S)	Bituminous Concrete	Local	1,226.00	74
PINE NEEDLE DRIVE	COLONIAL DRIVE	DEAD END	Bituminous Concrete	Dead End/Subd.	970.00	56
PLEASANT STREET	800' W OF MILLVILLE STREET	PARK STREET	Bituminous Concrete	Local	3,973.30	100
PLEASANT STREET	MILLVILLE STREET	800' W OF MILLVILLE STREET	Bituminous Concrete	Local	800.70	100
POWERS ROAD	NORTH AVENUE	TOWN LINE	Bituminous Concrete	Local	897.00	52
PROVIDENCE STREET	GEORGE STREET	1325' N OF MORRISON DRIVE	Bituminous Concrete	Collector	2,879.70	53
PROVIDENCE STREET	1325' N OF MORRISON DRIVE	510' N OF HARTFORD AVENUE	Bituminous Concrete	Collector	2,172.00	89
PROVIDENCE STREET	510' N OF HARTFORD AVENUE	EA280' S OF HARTFORD AVENUE	Bituminous Concrete	Collector	790.40	100
PROVIDENCE STREET	280' S OF HARTFORD AVENUE	EAASHKINS DRIVE	Bituminous Concrete	Collector	2,664.90	100
PROVIDENCE STREET	ASHKINS DRIVE	KING PHILLIP PATH	Bituminous Concrete	Collector	1,957.30	100
PROVIDENCE STREET	KING PHILLIP PATH	DEER HILL DRIVE	Bituminous Concrete	Collector	3,543.70	100
PROVIDENCE STREET	DEER HILL DRIVE	TOWN LINE	Bituminous Concrete	Collector	2,985.00	100
PROVIDENCE STREET (Y IN	PROVIDENCE STREET	HARTFORD AV	Bituminous Concrete	Collector	116.00	65
PUDDINGSTONE LANE	PINE NEEDLE DRIVE	COLONIAL DRIVE	Bituminous Concrete	Local	2,301.00	55
QUISSETT ROAD	PROVIDENCE STREET	DEAD END	Bituminous Concrete	Dead End/Subd.	4,342.00	51
SANDRA CIRCLE	MOWRY STREET (N)	MOWRY STREET (S)	Bituminous Concrete	Local	2,105.00	66
SOUTHWICK STREET	TOWN LINE (N)	50' E OF ASYLUM STREET	Bituminous Concrete	Local	1,510.10	95
SOUTHWICK STREET	50' E OF ASYLUM STREET	TOWN LINE (S)	Bituminous Concrete	Local	1,634.67	38
SPRINGBROOK COURT	BLACKSTONE STREET	CUL DE SAC	Bituminous Concrete	Dead End/Subd.	817.00	55
SWANDALE DRIVE	CEMETERY STREET	CUL DE SAC	Bituminous Concrete	Dead End/Subd.	800.00	68

# Pavement Inventory Report

<u>Street Name</u>	<u>From Segment</u>	<u>To Segment</u>	<u>Pavement Type</u>	<u>Pavement Class</u>	<u>Length (ft)</u>	<u>PCI</u>
TAFT AVENUE	MILLVILLE STREET	UXBRIDGE ROAD	Bituminous Concrete	Local	2,429.00	63
TALBOTT FARM DRIVE	HARTFORD AVENUE EAST	BELLINGHAM STREET	Bituminous Concrete	Local	4,002.00	68
TERESA DRIVE	MARY DRIVE	CUL DE SAC	Bituminous Concrete	Dead End/Subd.	1,242.00	53
THAYER ROAD	BATES STREET EXTENSION	CATALPA LANE	Bituminous Concrete	Local	986.00	63
THAYER ROAD	CATALPA LANE	DEAD END	Bituminous Concrete	Dead End/Subd.	2,794.00	41
THORNTON STREET	UXBRIDGE ROAD	HARTFORD AVENUE WEST	Bituminous Concrete	Local	2,850.00	45
TOWER ROAD	MILLVILLE STREET	DEAD END	Bituminous Concrete	Dead End/Subd.	965.00	51
TRASK ROAD	HOPEDALE STREET	DEAD END	Bituminous Concrete	Dead End/Subd.	848.00	48
VINCENT ROAD	PROVIDENCE STREET	BLUEBERRY DRIVE (E)	Bituminous Concrete	Local	2,885.00	55
VINCENT ROAD	BLUEBERRY DRIVE (E)	750' N OF BUTLER ROAD	Bituminous Concrete	Local	1,859.20	55
VINCENT ROAD	750' N OF BUTLER ROAD	BUTLER ROAD	Bituminous Concrete	Local	749.80	88
WASHINGTON STREET	HASTINGS STREET	2500' N OF HASTINGS STREET	Bituminous Concrete	Local	2,500.00	99
WASHINGTON STREET	2500' N OF HASTINGS STREET	NORTHBRIDGE ROAD	Bituminous Concrete	Local	3,024.00	99
WESLEY DRIVE	BLACKSTONE STREET	KELLEY ROAD	Bituminous Concrete	Local	1,717.00	51
WEST HILL ROAD	NORTHBRIDGE ROAD	870' E OF TOWN LINE	Bituminous Concrete	Local	2,043.60	74
WEST HILL ROAD	870' E OF TOWN LINE	TOWN LINE	Bituminous Concrete	Local	869.23	53
WHITE ROAD	EMERSON STREET	WESLEY DRIVE	Bituminous Concrete	Local	1,415.00	53
WOOD DRIVE	MILLVILLE STREET (N)	CHAPIN COURT	Bituminous Concrete	Local	2,124.00	55
WOOD DRIVE	CHAPIN COURT	MILLVILLE STREET (S)	Bituminous Concrete	Local	2,869.76	55



## Appendix B

### Unit Costs

---

<b>Repair Alternative</b>	<b>Unit Cost (\$/SY)</b>
Do Nothing	\$0.00
Crackseal Only	\$0.30
Crackseal & Chip Seal	\$4.00
Crackseal & Rubber Chip Seal	\$6.00
Crackseal, Level 1.5" HMA, Double Chip	\$10.00
Crackseal, Level 1.5" HMA, Double Rubber Chip	\$13.00
Reclaim & Pave 4" HMA	\$25.50
Reclaim & Pave 5" HMA	\$31.00



# Appendix C

## Glossary of Terms

---

---

### Definitions

**BASE INDEX (BI):** is an index derived from controlled measurements and evaluations of condition survey distresses attributed to the underlying unbound base and subbase materials, and is manifested as non-utility patches, alligating, cross section, and consolidation. It is a rating established as an indicator of asphalt materials quality and performance on a scale from 0 to 100, with 100 being excellent.

**BENEFIT VALUE (BV):** The benefit value is computed by RoadManager 2000™ at the time it determines the most beneficial recommended repair for a particular road section. The benefit value formula is:

$$\frac{\text{ADT} \times \text{Estimated Repair Life}}{\text{Current Cost} \times \text{Condition Index}}$$

Where BV = benefit value, ADT = average daily traffic, and Condition Index = the condition index for the particular road section for the type of work being done.

**CAPITAL REPAIRS:** Capital repairs are extensive and costly repairs such as Structural Improvement and Base Rehabilitation work.

**DEDUCT VALUES:** Deduct values represent the penalty assessed for each identified distress and is used in the calculation of the Pavement Condition Index. Each distress has multiple severity and extent levels, with a specific deduct value at each level. Deduct values may be modified for all nine pavement distress types. The deduct value is ultimately subtracted from a perfect pavement condition of 100.

**DEFICIENCY:** is any indication of poor or unfavorable pavement performance or signs of impending failure; or any unsatisfactory performance of a pavement short of failure.

**DETERIORATION RATE:** is a prediction of the anticipated change in a roadway's condition over time.



**DISTRESS:** Distresses are the physical defects in a pavement system which can be observed and quantified through visual inspection of the roadway surface. Broad categories include cracking, patching, depressions, and surface wear.

**FUNCTIONAL CLASSIFICATION:** Road functional classification places all streets and roads in the network into one of three general categories - arterial, collector, or local - according to vehicular volume, roadway geometry, and traffic characteristics.

**GRADE:** is a measure of the steepness of a slope, expressed as a percentage. One percent slope has one foot of elevation change in one hundred feet of horizontal distance.

**MAINTENANCE:** is anything done to the pavement after original construction short of complete reconstruction, excluding shoulders and bridges.

**NETWORK LEVEL:** is an assessment of conditions and/or program needs across the entire roadway system encompassed by the roadway management study.

**PAVEMENT CONDITION INDEX (PCI):** is an index derived from established measurements of pavement surface condition distress or deficiencies. It is a serviceability rating established under controlled conditions having a scale of 0 to 100, with 100 being excellent.

**PAVEMENT MANAGEMENT (PM):** Pavement Management is the effective and efficient directing of the various activities involved in providing and sustaining pavements in a condition acceptable to the traveling public at the lowest life-cycle cost.

**PAVEMENT MANAGEMENT SYSTEM (PMS):** is an established, documented procedure treating many or all of the Pavement Management activities in a systematic and coordinated manner. It consists of five essential elements structured to serve decision-making responsibilities at various management levels.

1. Pavement surveys related to condition and serviceability;
2. Database containing all pavement-related information;
3. Analysis scheme;
4. Decision criteria;
5. Implementation procedures.

**PAVEMENT PERFORMANCE:** is the assessment of how well the pavement served the user over time. The engineer often associates pavement condition with an arbitrary, but quantifiable, value relating to pavement roughness, pavement distress, or pavement strength. Performance is the measured change of condition and/or serviceability over increments of time.

**PAVEMENT TYPES:** The RoadManager system assigns an unlimited number of pavement types, including bituminous concrete, surface treated, gravel, portland cement concrete, and composite, to the streets and roads. Pavement types serve to



inform pavement engineers of the operating condition of the street, and provides a meaningful communication tool when engineering judgment is required to select possible rehabilitation alternatives. "Surface treated" designates a road surface and pavement structure that evolved over time. Generally, this type of surface starts as a dirt road, then is built up over time with a series of sand seals and stone seals. Conversely, a "bituminous concrete" roadway is typically engineered with a pavement structure designed to withstand predicted traffic volumes. The roadway usually has a gravel base, a binder course, and an asphalt wearing surface. The "composite" surface type is used to describe a bituminous concrete roadway that has received a preventive maintenance surface treatment, such as microsurfacing.

**PRESERVATION MAINTENANCE:** Preservation maintenance is used to describe the routine and preventive maintenance repair categories.

**PREVENTIVE MAINTENANCE:** Preventive maintenance activities are those which are performed at planned intervals to protect and seal the pavement. Seals are designed to provide one or more of the following benefits:

1. Prevent the intrusion of air and moisture;
2. Fill small cracks and voids;
3. Rejuvenate an oxidized binder;
4. Provide a new wearing surface.

**PROJECT LEVEL:** is a detailed assessment or identification of needs relative to a specific roadway, or a section thereof, as opposed to network level applications. It may include on site pavement testing, lab evaluation, life cycle cost analysis, and treatment recommendation for the particular pavement section.

**RECONSTRUCTION:** Reconstruction is the complete removal and replacement of a failed pavement, and might also involve widening, realignment, traffic control devices, safety hardware, and major base and drainage work.

**REHABILITATION:** The rehabilitation of pavements includes the work necessary to restore the pavement to a condition that will allow it to perform satisfactorily for several years. Rehabilitation also includes the work necessary to prepare the pavement for an overlay. The major activities involved in the rehabilitation process are:

1. Partial depth patching;
2. Full depth patching;
3. Joint and crack sealing.
4. Grouting and undersealing (filling voids);
5. Grinding and milling (removal of high spots in the pavement.)
6. Overlays.

**REPAIR STRATEGIES:** The RoadManager 2000™ represents repair strategies in a table of user defined "if, then" statements. The recommended repairs are based on seven decision factors: PCI range, Base Index, Surface Index, Functional Classification,



Surface Type, Utility Index, and Drainage Index. These input conditions to the repair strategy table represent the various conditions for each decision factor.

**REPAIR TYPES:** are the various choices of treatment available for providing a solution to a pavement deficiency or problem. The associated repair type cost is based on a locality's past experience.

**ROADWAY MANAGEMENT SYSTEM:** A roadway management system has all the database attributes of a pavement management system as defined above, along with recording additional inventory and condition data on a range of roadside elements. These additions to the management system database may include drainage features, utilities, traffic signs, pavement markings, sidewalks, pedestrian ramps and other road related elements within the right of way. Because the roadway management system has common locating and identifying fields for each roadside element, the database can be comprehensively evaluated for system wide planning and management.

**ROUTINE MAINTENANCE:** Routine maintenance activities are those which are taken to correct a specific pavement failure or area distress. Routine maintenance usually addresses localized pavement defects and includes activities such as:

1. Full depth patching;
2. Skin patching;
3. Crack sealing.

**SURFACE INDEX (SI):** is an index derived from controlled measurements and evaluations of the pavement condition survey distresses attributed to such asphalt mixture and material components as: surface wear/raveling, mix characteristics, and polished aggregate. It is a rating established as an indicator of asphalt materials quality and performance on a scale from 0 to 100, with 100 being excellent.

**THRESHOLDS:** The thresholds define various condition index ranges used in the determination of recommended repairs. These thresholds identify PCI ranges from 1 to 5, with 5 representing optimal conditions and 1 representing complete reconstruction.



# Appendix D

## Backlog Report

List of all pavement segments grouped by the system generated repair alternative.  
Includes repair type, estimated cost, and benefit value.



# Pavement Backlog Report (by Treatment)

<u>Street Name</u>	<u>From</u>	<u>To</u>	<u>Alternative</u>	<u>Length (ft)</u>	<u>PCI</u>	<u>Repair Cost</u>	<u>Benefit Value</u>
<b><u>Cr.Seal &amp; Chipseal</u></b>							
BICKNELL DRIVE	GEORGE STREET	240' N OF NECK HILL ROAD	Cr.Seal & Chipseal	2,534	74	\$28,231	34
PARKER ROAD	TALBOTT FARM DRIVE (N)	TALBOTT FARM DRIVE (S)	Cr.Seal & Chipseal	1,226	74	\$13,659	34
WEST HILL ROAD	NORTHBRIDGE ROAD	870' E OF TOWN LINE	Cr.Seal & Chipseal	2,044	74	\$17,514	34
ASYLUM STREET (Y INT)	PLEASANT STREET	ASYLUM STREET	Cr.Seal & Chipseal	118	75	\$607	34
CRESTVIEW DRIVE	GEORGE STREET	2500' N OF GEORGE ST	Cr.Seal & Chipseal	2,500	75	\$27,853	34
CRESTVIEW DRIVE	2500' N OF GEORGE ST	MANTONI DRIVE	Cr.Seal & Chipseal	2,918	75	\$32,510	34
ELM STREET	MAPLE STREET	HASTINGS STREET	Cr.Seal & Chipseal	664	75	\$5,691	34
LUNDVALL ROAD	ASHKINS DRIVE (N)	ASHKINS DRIVE (S)	Cr.Seal & Chipseal	2,125	75	\$23,675	34
BLACKSTONE STREET	MAIN STREET	WESLEY DRIVE	Cr.Seal & Chipseal	2,335	76	\$22,009	34
DAVENPORT ROAD	MISCOE ROAD	CUL DE SAC LOOP	Cr.Seal & Chipseal	1,020	76	\$11,364	34
LAPHAM COURT	BICKNELL DRIVE	CUL DE SAC LOOP	Cr.Seal & Chipseal	842	76	\$9,381	34
MAIN STREET	250' S OF MAPLE STREET	GEORGE STREET	Cr.Seal & Chipseal	625	76	\$6,960	34
MISCOE ROAD	DAVENPORT ROAD	DEAD END	Cr.Seal & Chipseal	2,836	76	\$20,660	34
BICKNELL DRIVE	240' N OF NECK HILL ROAD	NECK HILL ROAD	Cr.Seal & Chipseal	240	77	\$2,674	33
CATALPA LANE	THAYER ROAD	CUL DE SAC	Cr.Seal & Chipseal	719	77	\$10,262	33
CRANBERRY COURT	BLUEBERRY DRIVE	CUL DE SAC	Cr.Seal & Chipseal	785	77	\$12,172	33
LORI LANE	SANDRA CIRCLE	CUL DE SAC	Cr.Seal & Chipseal	465	77	\$6,844	33
METCALF ROAD	MISCOE ROAD	CUL DE SAC LOOP	Cr.Seal & Chipseal	1,033	77	\$11,509	33
ASYLUM STREET	PLEASANT STREET	300' S OF PLEASANT STREET	Cr.Seal & Chipseal	301	78	\$2,575	33
MORRISON DRIVE	PROVIDENCE STREET	CUL DE SAC	Cr.Seal & Chipseal	776	78	\$16,691	33
CADMAN ROAD	NORTHBRIDGE ROAD	800' S OF LEONARD ROAD	Cr.Seal & Chipseal	2,331	80	\$24,967	32
MORRISON DRIVE (EXT)	MORRISON DRIVE	CUL DE SAC	Cr.Seal & Chipseal	360	82	\$6,039	31
CALUMET CIRCLE	KING PHILLIP PATH	CUL DE SAC LOOP	Cr.Seal & Chipseal	297	85	\$3,309	30
MOWRY STREET	90' N OF SANDRA CIRCLE (S)	630' S OF SANDRA CIRCLE (S)	Cr.Seal & Chipseal	717	85	\$6,147	30
<b><u>Cr.Seal &amp; RubberChip</u></b>							
CEMETERY STREET	HARTFORD AVENUE EAST	PROVIDENCE STREET	Cr.Seal & RubberChip	2,495	75	\$36,154	66
MILLVILLE STREET	UXBRIDGE ROAD	MILLVILLE STREET	Cr.Seal & RubberChip	433	76	\$7,410	66
NORTH AVENUE	ETSY ROAD	MISCOE ROAD	Cr.Seal & RubberChip	3,595	76	\$59,191	66
NORTH AVENUE	MISCOE ROAD	TOWN LINE	Cr.Seal & RubberChip	2,682	76	\$44,163	66
MAPLE STREET (Y INT)	MAIN STREET	MAPLE STREET	Cr.Seal & RubberChip	125	79	\$2,305	63
HARTFORD AVENUE EAST	NECK HILL ROAD	500' E OF MENFI WAY	Cr.Seal & RubberChip	3,295	84	\$60,759	59
NORTHBRIDGE STREET	LOWELL DRIVE	TOWN LINE	Cr.Seal & RubberChip	3,868	84	\$61,141	59
BATES STREET	BELLINGHAM STREET	THAYER ROAD	Cr.Seal & RubberChip	3,888	85	\$61,463	59

# Pavement Backlog Report (by Treatment)

<u>Street Name</u>	<u>From</u>	<u>To</u>	<u>Alternative</u>	<u>Length (ft)</u>	<u>PCI</u>	<u>Repair Cost</u>	<u>Benefit Value</u>
<b><u>Cr.Seal &amp; RubberChip</u></b>							
BATES STREET	THAYER ROAD	TOWN LINE	Cr.Seal & RubberChip	1,127	85	\$17,808	59
NORTHBRIDGE STREET	NORTH AVENUE	FOREST PARK DRIVE	Cr.Seal & RubberChip	2,781	85	\$40,298	59
NORTHBRIDGE STREET	FOREST PARK DRIVE	LOWELL DRIVE	Cr.Seal & RubberChip	2,088	85	\$30,253	59
NECK HILL ROAD	1000' W OF HARTFORD AVE EAST	HARTFORD AVENUE EAST	Cr.Seal & RubberChip	1,042	75	\$15,099	27
<b><u>Cr.Seal, Level &amp; Double Chip</u></b>							
EMERSON STREET	BLACKSTONE STREET	HASTINGS STREET	Cr.Seal, Level & Double Chip	2,060	62	\$48,855	27
BUTLER ROAD	CARPENTER HILL ROAD (N)	CARPENTER HILL ROAD (S)	Cr.Seal, Level & Double Chip	3,447	63	\$98,100	26
MAIN STREET	MAPLE STREET	250' S OF MAPLE STREET	Cr.Seal, Level & Double Chip	248	63	\$8,833	26
NELSON COURT	BLUEBERRY DRIVE	CUL DE SAC	Cr.Seal, Level & Double Chip	779	63	\$29,442	26
TAFT AVENUE	MILLVILLE STREET	UXBRIDGE ROAD	Cr.Seal, Level & Double Chip	2,429	63	\$63,367	26
THAYER ROAD	BATES STREET EXTENSION	CATALPA LANE	Cr.Seal, Level & Double Chip	986	63	\$21,046	26
CARPENTER HILL ROAD	BLACKSTONE STREET (N)	BLACKSTONE STREET (S)	Cr.Seal, Level & Double Chip	3,071	64	\$87,399	26
KELLEY ROAD	MILLVILLE STREET	CUL DE SAC LOOP	Cr.Seal, Level & Double Chip	2,179	64	\$67,181	26
COLONIAL DRIVE	PROVIDENCE STREET	PUDDINGSTONE LANE	Cr.Seal, Level & Double Chip	1,781	65	\$67,597	26
FOREST PARK DRIVE	NORTHBRIDGE ROAD	CUL DE SAC	Cr.Seal, Level & Double Chip	2,936	65	\$90,520	26
LEONARD ROAD	FOREST PARK DRIVE	CUL DE SAC	Cr.Seal, Level & Double Chip	1,483	65	\$48,840	26
ASHKINS DRIVE	PROVIDENCE STREET	CUL DE SAC LOOP	Cr.Seal, Level & Double Chip	3,737	66	\$115,216	25
CROSS STREET	WOOD DR (N)	WOOD DRIVE (S)	Cr.Seal, Level & Double Chip	162	66	\$4,995	25
SANDRA CIRCLE	MOWRY STREET (N)	MOWRY STREET (S)	Cr.Seal, Level & Double Chip	2,105	66	\$62,403	25
MANTONI DRIVE	CRESTVIEW DRIVE	TOWN LINE	Cr.Seal, Level & Double Chip	397	67	\$12,240	25
MILL RIVER DRIVE	HARTFORD AVENUE EAST	CUL DE SAC	Cr.Seal, Level & Double Chip	770	67	\$29,216	25
SWANDALE DRIVE	CEMETERY STREET	CUL DE SAC	Cr.Seal, Level & Double Chip	800	68	\$30,065	24
TALBOTT FARM DRIVE	HARTFORD AVENUE EAST	BELLINGHAM STREET	Cr.Seal, Level & Double Chip	4,002	68	\$123,386	24
DEER HILL DRIVE	PROVIDENCE STREET	CUL DE SAC LOOP	Cr.Seal, Level & Double Chip	673	72	\$19,153	23
<b><u>Cr.Seal, Level &amp; Double RubberChip</u></b>							
CAPE ROAD	BORROWS ROAD	TOWN LINE	Cr.Seal, Level & Double Rubl	2,489	70	\$106,208	110
CAPE ROAD	450' S OF HARTFORD AVENUE EA	BORROWS ROAD	Cr.Seal, Level & Double Rubl	2,561	70	\$109,272	110
PROVIDENCE STREET (Y	INPROVIDENCE STREET	HARTFORD AV	Cr.Seal, Level & Double Rubl	116	65	\$3,960	59
NECK HILL ROAD	GEORGE STREET	325' E OF OAK HILL ROAD	Cr.Seal, Level & Double Rubl	3,593	66	\$117,567	23
<b><u>Crackseal</u></b>							
BELLINGHAM STREET	150' E OF HARTFORD AVENUE	CARBY DRIVE	Crackseal	3,913	86	\$3,088	933

# Pavement Backlog Report (by Treatment)

<u>Street Name</u>	<u>From</u>	<u>To</u>	<u>Alternative</u>	<u>Length (ft)</u>	<u>PCI</u>	<u>Repair Cost</u>	<u>Benefit Value</u>
<b><u>Crackseal</u></b>							
BELLINGHAM STREET	CARBY DRIVE	CAPE ROAD	Crackseal	3,592	86	\$2,834	933
HARTFORD AVENUE EAST	WARFIELD ROAD	NECK HILL ROAD	Crackseal	2,029	88	\$1,468	912
HARTFORD AVENUE EAST	400' E OF PROVIDENCE STREET	WARFIELD ROAD	Crackseal	3,565	88	\$2,579	912
NORTH AVENUE	150' N OF MAIN STREET	WESTERN CIRCLE AVENUE	Crackseal	1,946	88	\$2,048	912
NORTH AVENUE	WESTERN CIRCLE AVENUE	ESTY ROAD	Crackseal	3,182	88	\$2,929	912
NORTHBRIDGE STREET (Y	NORTHBRIDGE ROAD	NORTH AVENUE	Crackseal	155	88	\$112	912
BELLINGHAM STREET	HARTFORD AVENUE EAST	150' E OF HARTFORD AVENUE	Crackseal	150	89	\$128	903
MILLVILLE STREET	2085' N OF WOOD DRIVE	TOWN LINE	Crackseal	4,082	89	\$3,355	903
MILLVILLE STREET	LOVELL STREET	2085' N OF WOOD DRIVE	Crackseal	3,437	89	\$2,825	903
PROVIDENCE STREET	1325' N OF MORRISON DRIVE	510' N OF HARTFORD AVENUE	Crackseal	2,172	89	\$2,142	903
HARTFORD AVENUE EAST	500' EAST OF MENFI WAY	TOWN LINE	Crackseal	2,331	90	\$2,759	893
GEORGE STREET	PROVIDENCE STREET	NECK HILL ROAD	Crackseal	2,845	86	\$2,245	373
BLUEBERRY DRIVE	VINCENT ROAD €	VINCENT ROAD (W)	Crackseal	2,954	87	\$2,428	369
HOPEDALE STREET	460' EAST OF TRASK ROAD	TOWN LINE	Crackseal	1,387	87	\$1,094	369
KING PHILIP PATH	PROVIDENCE STREET	MASSASOIT WAY	Crackseal	3,588	87	\$3,067	369
GEORGE STREET	NECK HILL ROAD	MILL STREET	Crackseal	2,025	88	\$1,464	365
KINSLEY LANE (EXT)	KINSLEY LANE	DEAD END	Crackseal	727	88	\$287	365
LOVELL STREET	BLACKISTONE STREET	MILLVILLE STREET	Crackseal	2,951	88	\$1,940	365
MASSASOIT WAY	PROVIDENCE STREET	CUL DE SAC LOOP	Crackseal	1,929	88	\$1,649	365
VINCENT ROAD	750' N OF BUTLER ROAD	BUTLER ROAD	Crackseal	750	88	\$616	365
<b><u>Do Nothing</u></b>							
BATES STREET	CAPE ROAD	BELLINGHAM STREET	Do Nothing	3,021	100	\$0	0
CAPE ROAD	HARTFORD AVENUE EAST	450' S OF HARTFORD AVENUE	Do Nothing	450	95	\$0	0
DUDLEY ROAD	WESTCOTT ROAD	BALLOU ROAD	Do Nothing	2,870	94	\$0	0
FREEMAN PLACE	PARK STREET	CUL DE SAC	Do Nothing	675	98	\$0	0
HARTFORD AVENUE EAST	PROVIDENCE STREET	400' EAST OF PROVIDENCE ST	Do Nothing	402	95	\$0	0
HARTFORD AVENUE WEST	UXBRIDGE ROAD	OLD SAWMILL RD	Do Nothing	2,658	95	\$0	0
HARTFORD AVENUE WEST	OLD SAWMILL RD	THORNTON STREET	Do Nothing	1,963	95	\$0	0
HARTFORD AVENUE WEST	THORNTON STREET	TOWN LINE	Do Nothing	2,722	95	\$0	0
MAIN STREET	HASTINGS STREET	260' S OF HASTINGS STREET	Do Nothing	260	95	\$0	0
MAIN STREET (Y INT)	MAIN STREET	MILFORD STREET	Do Nothing	208	99	\$0	0
MAPLE LEAF LANE	PUDDINGSTONE LANE	DEAD END	Do Nothing	332	95	\$0	0
MILLVILLE STREET	WILLOWBROOK LANE	LOVELL ROAD	Do Nothing	4,015	94	\$0	0

# Pavement Backlog Report (by Treatment)

<u>Street Name</u>	<u>From</u>	<u>To</u>	<u>Alternative</u>	<u>Length (ft)</u>	<u>PCI</u>	<u>Repair Cost</u>	<u>Benefit Value</u>
<b><u>Do Nothing</u></b>							
MILLVILLE STREET	Y-INTERSECTION	WILLOWBROOK LANE	Do Nothing	4,234	94	\$0	0
MYRTLE STREET	MILLVILLE STREET	DEAD END	Do Nothing	409	95	\$0	0
NORTH AVENUE	MAIN STREET	150' N OF MAIN STREET	Do Nothing	153	95	\$0	0
PARK STREET	330' W OF PLEASANT STREET	TOWN LINE	Do Nothing	2,660	100	\$0	0
PLEASANT STREET	800' W OF MILLVILLE STREET	PARK STREET	Do Nothing	3,973	100	\$0	0
PLEASANT STREET	MILLVILLE STREET	800' W OF MILLVILLE STREET	Do Nothing	801	100	\$0	0
PROVIDENCE STREET	510' N OF HARTFORD AVENUE EA	280' S OF HARTFORD AVENUE E	Do Nothing	790	100	\$0	0
PROVIDENCE STREET	KING PHILLIP PATH	DEER HILL DRIVE	Do Nothing	3,544	100	\$0	0
PROVIDENCE STREET	DEER HILL DRIVE	TOWN LINE	Do Nothing	2,985	100	\$0	0
PROVIDENCE STREET	280' S OF HARTFORD AVENUE EA	ASHKINS DRIVE	Do Nothing	2,665	100	\$0	0
PROVIDENCE STREET	ASHKINS DRIVE	KING PHILLIP PATH	Do Nothing	1,957	100	\$0	0
SOUTHWICK STREET	TOWN LINE (N)	50' E OF ASYLUM STREET	Do Nothing	1,510	95	\$0	0
WASHINGTON STREET	HASTINGS STREET	2500' N OF HASTINGS STREET	Do Nothing	2,500	99	\$0	0
WASHINGTON STREET	2500' N OF HASTINGS STREET	NORTHBRIDGE ROAD	Do Nothing	3,024	99	\$0	0
<b><u>Reclaim &amp; Pave 4" HMA</u></b>							
INMAN HILL ROAD	BLACKISTONE STREET	DEAD END	Reclaim & Pave 4" HMA	2,083	35	\$81,466	45
BLACKSTONE STREET	WESLEY DRIVE	1950' S OF WESLEY STREET	Reclaim & Pave 4" HMA	1,957	38	\$120,243	41
BLACKSTONE STREET	CARPENTER HILL ROAD (N)	100' S OF LOVELL LANE	Reclaim & Pave 4" HMA	1,369	38	\$99,434	41
SOUTHWICK STREET	50' E OF ASYLUM STREET	TOWN LINE (S)	Reclaim & Pave 4" HMA	1,635	38	\$82,198	41
ASYLUM STREET	300' S OF PLEASANT ST	100' S OF HOUSE #28	Reclaim & Pave 4" HMA	1,980	39	\$110,597	40
ASYLUM STREET	100' S OF HOUSE #28	SOUTHWICK STREET	Reclaim & Pave 4" HMA	3,700	40	\$186,032	39
THAYER ROAD	CATALPA LANE	DEAD END	Reclaim & Pave 4" HMA	2,794	41	\$109,273	38
BARROWS ROAD	CAPE ROAD	CUL DE SAC	Reclaim & Pave 4" HMA	813	42	\$77,711	37
MOWRY STREET	630' S OF SANDRA CIRCLE (S)	PARK STREET	Reclaim & Pave 4" HMA	1,729	43	\$86,946	36
MOWRY STREET	UXBRIDGE STREET	90' N OF SANDRA CIRCLE (S)	Reclaim & Pave 4" HMA	1,219	44	\$68,090	36
DANIELS ROAD	NECK HILL ROAD E	NECK HILL ROAD (W)	Reclaim & Pave 4" HMA	2,695	45	\$203,273	35
THORNTON STREET	UXBRIDGE ROAD	HARTFORD AVENUE WEST	Reclaim & Pave 4" HMA	2,850	45	\$143,310	35
BRACCI LANE	TOWN LINE	DEAD END	Reclaim & Pave 4" HMA	503	48	\$28,103	33
HOPEDALE STREET	NORTH AVENUE	460' EAST OF TRASK ROAD	Reclaim & Pave 4" HMA	1,815	48	\$121,714	33
TRASK ROAD	HOPEDALE STREET	DEAD END	Reclaim & Pave 4" HMA	848	48	\$42,641	33
KINSLEY LANE	MILLVILLE STREET	DEAD END	Reclaim & Pave 4" HMA	3,052	51	\$153,467	31
QUISSETT ROAD	PROVIDENCE STREET	DEAD END	Reclaim & Pave 4" HMA	4,342	51	\$218,334	31
TOWER ROAD	MILLVILLE STREET	DEAD END	Reclaim & Pave 4" HMA	965	51	\$43,133	31

# Pavement Backlog Report (by Treatment)

<u>Street Name</u>	<u>From</u>	<u>To</u>	<u>Alternative</u>	<u>Length (ft)</u>	<u>PCI</u>	<u>Repair Cost</u>	<u>Benefit Value</u>
<b><u>Reclaim &amp; Pave 4" HMA</u></b>							
WESLEY DRIVE	BLACKSTONE STREET	KELLEY ROAD	Reclaim & Pave 4" HMA	1,717	51	\$124,710	31
POWERS ROAD	NORTH AVENUE	TOWN LINE	Reclaim & Pave 4" HMA	897	52	\$42,599	30
JOSEPH ROAD	EDWARD ROAD	CUL DE SAC	Reclaim & Pave 4" HMA	395	53	\$45,962	30
PARK STREET	FREEMAN PLACE	330' W OF PLEASANT STREET	Reclaim & Pave 4" HMA	3,615	53	\$201,980	30
TERESA DRIVE	MARY DRIVE	CUL DE SAC	Reclaim & Pave 4" HMA	1,242	53	\$117,648	30
WEST HILL ROAD	870' E OF TOWN LINE	TOWN LINE	Reclaim & Pave 4" HMA	869	53	\$48,565	30
WHITE ROAD	EMERSON STREET	WESLEY DRIVE	Reclaim & Pave 4" HMA	1,415	53	\$102,775	30
BLACKSTONE STREET	1950' S OF WESLEY DRIVE	CARPENTER HILL ROAD (N)	Reclaim & Pave 4" HMA	3,210	54	\$197,275	29
COLONIAL DRIVE	PUDDINGSTONE LANE	DEAD END	Reclaim & Pave 4" HMA	3,972	54	\$299,626	29
EDWARD ROAD	BATES STREET	EDWARD ROAD	Reclaim & Pave 4" HMA	3,010	54	\$252,259	29
ESTY ROAD	NORTH AVENUE	CUL DE SAC	Reclaim & Pave 4" HMA	446	54	\$46,348	29
GASKILL STREET	GEORGE STREET	PROVIDENCE STREET	Reclaim & Pave 4" HMA	1,474	54	\$82,354	29
MEGAN COURT	WHITE ROAD	CUL DE SAC LOOP	Reclaim & Pave 4" HMA	1,108	54	\$80,477	29
OLD TAFT AVENUE	TAFT AVENUE	UXBRIDGE ROAD	Reclaim & Pave 4" HMA	698	54	\$23,399	29
PARK STREET	NIPMUC DRIVE	FREEMAN PLACE	Reclaim & Pave 4" HMA	1,510	54	\$84,360	29
BLACKSTONE STREET	40' N OF INMAN HILL ROAD	TOWN LINE	Reclaim & Pave 4" HMA	3,356	55	\$206,275	29
CADMAN ROAD	800' S OF LEONARD ROAD	LEONARD ROAD	Reclaim & Pave 4" HMA	801	55	\$58,208	29
CHAPIN COURT	WOOD DRIVE	CUL DE SAC	Reclaim & Pave 4" HMA	539	55	\$49,130	29
LOWELL DRIVE	NORTHBRIDGE ROAD	CUL DE SAC	Reclaim & Pave 4" HMA	621	55	\$44,373	29
MILLBROOK DRIVE	BELLINGHAM STREET	CUL DE SAC	Reclaim & Pave 4" HMA	700	55	\$58,070	29
MOWRY STREET	UXBRIDGE ROAD	HARTFORD AVENUE WEST	Reclaim & Pave 4" HMA	3,376	55	\$169,759	29
PUDDINGSTONE LANE	PINE NEEDLE DRIVE	COLONIAL DRIVE	Reclaim & Pave 4" HMA	2,301	55	\$173,556	29
SPRINGBROOK COURT	BLACKSTONE STREET	CUL DE SAC	Reclaim & Pave 4" HMA	817	55	\$72,015	29
VINCENT ROAD	PROVIDENCE STREET	BLUEBERRY DRIVE (E)	Reclaim & Pave 4" HMA	2,885	55	\$201,486	29
VINCENT ROAD	BLUEBERRY DRIVE (E)	750' N OF BUTLER ROAD	Reclaim & Pave 4" HMA	1,859	55	\$129,845	29
WOOD DRIVE	MILLVILLE STREET (N)	CHAPIN COURT	Reclaim & Pave 4" HMA	2,124	55	\$154,272	29
WOOD DRIVE	CHAPIN COURT	MILLVILLE STREET (S)	Reclaim & Pave 4" HMA	2,870	55	\$208,438	29
LEONE LANE	LOWELL DRIVE	CUL DE SAC	Reclaim & Pave 4" HMA	333	56	\$18,605	28
MARY DRIVE	BELLINGHAM STREET	CUL DE SAC	Reclaim & Pave 4" HMA	1,057	56	\$102,144	28
MISCOE ROAD	NORTH AVENUE	DAVENPORT ROAD	Reclaim & Pave 4" HMA	520	56	\$24,695	28
NIPMUC DRIVE	UXBRIDGE ROAD	PARK STREET	Reclaim & Pave 4" HMA	616	56	\$34,417	28
PINE NEEDLE DRIVE	COLONIAL DRIVE	DEAD END	Reclaim & Pave 4" HMA	970	56	\$73,163	28
HARRINGTON STREET	MILFORD STREET	DEAD END	Reclaim & Pave 4" HMA	552	57	\$27,757	28
OAK HILL ROAD	NECK HILL ROAD	CUL DE SAC	Reclaim & Pave 4" HMA	721	57	\$62,046	28

# Pavement Backlog Report (by Treatment)

<u>Street Name</u>	<u>From</u>	<u>To</u>	<u>Alternative</u>	<u>Length (ft)</u>	<u>PCI</u>	<u>Repair Cost</u>	<u>Benefit Value</u>
<b><u>Reclaim &amp; Pave 4" HMA</u></b>							
CARBY DRIVE	BELLINGHAM STREET	TERESA DRIVE	Reclaim & Pave 4" HMA	458	58	\$38,384	27
BLACKSTONE STREET	100' S OF LOVELL LANE	40' N OF INMAN HILL ROAD	Reclaim & Pave 4" HMA	3,406	59	\$247,408	27
<b><u>Reclaim &amp; Pave 5"</u></b>							
PROVIDENCE STREET	GEORGE STREET	1325' N OF MORRISON DRIVE	Reclaim & Pave 5"	2,880	53	\$270,847	62
MAIN STREET	260' S OF HASTINGS ST	MAPLE STREET	Reclaim & Pave 5"	785	55	\$84,380	59
MAPLE STREET	HASTINGS STREET	MAIN STREET	Reclaim & Pave 5"	1,499	58	\$120,846	56
<b>Backlog</b>				<b>56.53Miles</b>		<b>\$ 8,521,687</b>	



# Appendix E

## Chapter 90 \$273,000/year Scenario Results

---

List of the system generated candidate projects based on Chapter 90 funding of \$273,000

# Budget Scenario Results Report

**Scenario: CH 90 \$273K**

<u>Street Name</u>	<u>From</u>	<u>To</u>	<u>Alternative</u>	<u>Length (ft)</u>	<u>PCI</u>	<u>Repair Cost</u>	<u>Benefit Value</u>
<b>Year: 2016</b>							
BELLINGHAM STREET	HARTFORD AVENUE EAST	150' E OF HARTFORD AVENUE E	Crackseal	150	86	\$133	932.83
CAPE ROAD	450' S OF HARTFORD AVENUE E	BORROWS ROAD	Cr.Seal, Level & Double RubberChip	2,561	66	\$112,898	116.59
CAPE ROAD	BORROWS ROAD	TOWN LINE	Cr.Seal, Level & Double RubberChip	2,489	66	\$109,732	116.59
DAVENPORT ROAD	MISCOE ROAD	CUL DE SAC LOOP	Cr.Seal & Chipseal	1,020	73	\$11,741	34.91
DUDLEY ROAD	WESTCOTT ROAD	BALLOU ROAD	Crackseal	2,870	92	\$2,535	349.65
HARTFORD AVENUE EAST	500' EAST OF MENFI WAY	TOWN LINE	Crackseal	2,331	88	\$2,851	912.40
MAPLE STREET (Y INT)	MAIN STREET	MAPLE STREET	Cr.Seal & RubberChip	125	75	\$2,382	66.40
MILLVILLE STREET	UXBRIDGE ROAD	MILLVILLE STREET	Cr.Seal & RubberChip	433	73	\$7,656	68.22
MILLVILLE STREET	Y-INTERSECTION	WILLOWBROOK LANE	Crackseal	4,234	92	\$3,596	874.12
MILLVILLE STREET	WILLOWBROOK LANE	LOVELL ROAD	Crackseal	4,015	92	\$3,410	874.12
MILLVILLE STREET	LOVELL STREET	2085' N OF WOOD DRIVE	Crackseal	3,437	87	\$2,919	922.50
MILLVILLE STREET	2085' N OF WOOD DRIVE	TOWN LINE	Crackseal	4,082	87	\$3,467	922.50
NORTHBRIDGE STREET (Y	NORTHBRIDGE ROAD	NORTH AVENUE	Cr.Seal & RubberChip	155	85	\$2,321	58.61
PROVIDENCE STREET	1325' N OF MORRISON DRIVE	510' N OF HARTFORD AVENUE V	Crackseal	2,172	87	\$2,213	922.50
PROVIDENCE STREET (Y IN	PROVIDENCE STREET	HARTFORD AV	Cr.Seal, Level & Double RubberChip	116	61	\$4,092	63.06
<b>Year: 2017</b>							
BATES STREET	THAYER ROAD	TOWN LINE	Cr.Seal & RubberChip	1,127	79	\$19,135	63.05
CALUMET CIRCLE	KING PHILLIP PATH	CUL DE SAC LOOP	Cr.Seal & Chipseal	297	79	\$3,555	32.26
CAPE ROAD	HARTFORD AVENUE EAST	450' S OF HARTFORD AVENUE E	Crackseal	450	91	\$572	1766.78
HARTFORD AVENUE EAST	PROVIDENCE STREET	400' EAST OF PROVIDENCE STR	Crackseal	402	91	\$426	883.39
HARTFORD AVENUE WEST	UXBRIDGE ROAD	OLD SAWMILL RD	Crackseal	2,658	91	\$3,004	883.39
HARTFORD AVENUE WEST	OLD SAWMILL RD	THORNTON STREET	Crackseal	1,963	91	\$2,219	883.39
HARTFORD AVENUE WEST	THORNTON STREET	TOWN LINE	Crackseal	2,722	91	\$3,077	883.39
KINSLEY LANE (EXT)	KINSLEY LANE	DEAD END	Cr.Seal & Chipseal	727	82	\$4,017	31.09
MAIN STREET	HASTINGS STREET	260' S OF HASTINGS STREET	Crackseal	260	90	\$294	892.85
MAIN STREET	260' S OF HASTINGS ST	MAPLE STREET	Reclaim & Pave 5"	785	47	\$90,664	69.36
MAPLE LEAF LANE	PUDDINGSTONE LANE	DEAD END	Crackseal	332	91	\$281	353.35
MAPLE STREET	HASTINGS STREET	MAIN STREET	Reclaim & Pave 5"	1,499	50	\$129,846	65.21
MORRISON DRIVE (EXT)	MORRISON DRIVE	CUL DE SAC	Cr.Seal & Chipseal	360	76	\$6,489	33.53
MOWRY STREET	90' N OF SANDRA CIRCLE (S)	630' S OF SANDRA CIRCLE (S)	Cr.Seal & Chipseal	717	79	\$6,604	32.26



**Scenario: CH 90 \$273K**

<u>Street Name</u>	<u>From</u>	<u>To</u>	<u>Alternative</u>	<u>Length (ft)</u>	<u>PCI</u>	<u>Repair Cost</u>	<u>Benefit Value</u>
MYRTLE STREET	MILLVILLE STREET	DEAD END	Crackseal	409	91	\$318	353.35
NORTH AVENUE	MAIN STREET	150' N OF MAIN STREET	Crackseal	153	91	\$173	883.39
SOUTHWICK STREET	TOWN LINE (N)	50' E OF ASYLUM STREET	Crackseal	1,510	91	\$960	353.35
<b>Year: 2018</b>							
ASYLUM STREET (Y INT)	PLEASANT STREET	ASYLUM STREET	Cr.Seal, Level & Double Chip	118	64	\$1,876	25.95
BATES STREET	BELLINGHAM STREET	THAYER ROAD	Cr.Seal & RubberChip	3,888	75	\$68,680	66.40
HARTFORD AVENUE EAST	NECK HILL ROAD	500' E OF MENFI WAY	Cr.Seal & RubberChip	3,295	74	\$67,894	67.30
LEONE LANE	LOWELL DRIVE	CUL DE SAC	Reclaim & Pave 4" HMA	333	47	\$20,790	33.36
NORTHBRIDGE STREET	NORTH AVENUE	FOREST PARK DRIVE	Cr.Seal & RubberChip	2,781	75	\$45,030	66.40
NORTHBRIDGE STREET	LOWELL DRIVE	TOWN LINE	Cr.Seal & RubberChip	3,868	74	\$68,321	67.30
<b>Year: 2019</b>							
BELLINGHAM STREET	150' E OF HARTFORD AVENUE	CARBY DRIVE	Cr.Seal & RubberChip	3,913	73	\$71,881	68.22
BELLINGHAM STREET	CARBY DRIVE	CAPE ROAD	Cr.Seal & RubberChip	3,592	73	\$65,986	68.22
FREEMAN PLACE	PARK STREET	CUL DE SAC	Crackseal	675	92	\$861	349.65
HOPEDALE STREET	460' EAST OF TRASK ROAD	TOWN LINE	Cr.Seal & Chipseal	1,387	74	\$16,572	34.44
NORTH AVENUE	150' N OF MAIN STREET	WESTERN CIRCLE AVENUE	Cr.Seal & RubberChip	1,946	75	\$47,672	66.40
NORTH AVENUE	WESTERN CIRCLE AVENUE	ESTY ROAD	Cr.Seal & RubberChip	3,182	75	\$68,199	66.40
<b>Year: 2020</b>							
BRACCI LANE	TOWN LINE	DEAD END	Reclaim & Pave 4" HMA	503	37	\$33,968	42.36
CEMETERY STREET	HARTFORD AVENUE EAST	PROVIDENCE STREET	Reclaim & Pave 5"	2,495	54	\$222,855	60.38
MAIN STREET (Y INT)	MAIN STREET	MILFORD STREET	Crackseal	208	92	\$215	349.65
WASHINGTON STREET	HASTINGS STREET	2500' N OF HASTINGS STREET	Crackseal	2,500	92	\$2,384	349.65
WASHINGTON STREET	2500' N OF HASTINGS STREET	NORTHBRIDGE ROAD	Crackseal	3,024	92	\$2,884	349.65
<b>Year: 2021</b>							
BELLINGHAM STREET	HARTFORD AVENUE EAST	150' E OF HARTFORD AVENUE E	Crackseal	150	92	\$161	874.12
CAPE ROAD	450' S OF HARTFORD AVENUE E.	BORROWS ROAD	Crackseal	2,561	90	\$3,175	1785.71
CAPE ROAD	BORROWS ROAD	TOWN LINE	Crackseal	2,489	90	\$3,086	1785.71
CROSS STREET	WOOD DR (N)	WOOD DRIVE (S)	Reclaim & Pave 4" HMA	162	47	\$14,790	33.36
DAVENPORT ROAD	MISCOE ROAD	CUL DE SAC LOOP	Crackseal	1,020	92	\$1,096	349.65
DUDLEY ROAD	WESTCOTT ROAD	BALLOU ROAD	Crackseal	2,870	92	\$3,084	349.65
HARTFORD AVENUE EAST	WARFIELD ROAD	NECK HILL ROAD	Cr.Seal, Level & Double RubberChip	2,029	68	\$79,822	56.58
HARTFORD AVENUE EAST	500' EAST OF MENFI WAY	TOWN LINE	Crackseal	2,331	92	\$3,468	874.12
MAPLE STREET (Y INT)	MAIN STREET	MAPLE STREET	Crackseal	125	90	\$145	892.85

**Scenario: CH 90 \$273K**

<u>Street Name</u>	<u>From</u>	<u>To</u>	<u>Alternative</u>	<u>Length (ft)</u>	<u>PCI</u>	<u>Repair Cost</u>	<u>Benefit Value</u>
MILLVILLE STREET	UXBRIDGE ROAD	MILLVILLE STREET	Crackseal	433	92	\$465	874.12
MILLVILLE STREET	Y-INTERSECTION	WILLOWBROOK LANE	Crackseal	4,234	92	\$4,375	874.12
MILLVILLE STREET	WILLOWBROOK LANE	LOVELL ROAD	Crackseal	4,015	92	\$4,149	874.12
MILLVILLE STREET	LOVELL STREET	2085' N OF WOOD DRIVE	Crackseal	3,437	92	\$3,551	874.12
MILLVILLE STREET	2085' N OF WOOD DRIVE	TOWN LINE	Crackseal	4,082	92	\$4,218	874.12
NORTHBRIDGE STREET	FOREST PARK DRIVE	LOWELL DRIVE	Cr.Seal, Level & Double RubberChip	2,088	64	\$82,131	60.11
NORTHBRIDGE STREET (Y	NORTHBRIDGE ROAD	NORTH AVENUE	Crackseal	155	92	\$141	874.12
PROVIDENCE STREET	1325' N OF MORRISON DRIVE	510' N OF HARTFORD AVENUE W	Crackseal	2,172	92	\$2,693	874.12
PROVIDENCE STREET (Y IN	PROVIDENCE STREET	HARTFORD AV	Crackseal	116	90	\$115	892.85
TRASK ROAD	HOPEDALE STREET	DEAD END	Reclaim & Pave 4" HMA	848	36	\$53,599	43.54
<b>Year: 2022</b>							
BATES STREET	THAYER ROAD	TOWN LINE	Crackseal	1,127	92	\$1,162	874.12
CALUMET CIRCLE	KING PHILLIP PATH	CUL DE SAC LOOP	Crackseal	297	92	\$332	349.65
CAPE ROAD	HARTFORD AVENUE EAST	450' S OF HARTFORD AVENUE E	Crackseal	450	90	\$695	1785.71
HARTFORD AVENUE EAST	PROVIDENCE STREET	400' EAST OF PROVIDENCE STR	Crackseal	402	92	\$518	874.12
HARTFORD AVENUE EAST	400' E OF PROVIDENCE STREET	WARFIELD ROAD	Cr.Seal, Level & Double RubberChip	3,565	65	\$145,856	59.19
HARTFORD AVENUE WEST	UXBRIDGE ROAD	OLD SAWMILL RD	Crackseal	2,658	92	\$3,655	874.12
HARTFORD AVENUE WEST	OLD SAWMILL RD	THORNTON STREET	Crackseal	1,963	92	\$2,699	874.12
HARTFORD AVENUE WEST	THORNTON STREET	TOWN LINE	Crackseal	2,722	92	\$3,743	874.12
INMAN HILL ROAD	BLACKISTONE STREET	DEAD END	Reclaim & Pave 4" HMA	2,083	31	\$106,495	50.55
KINSLEY LANE (EXT)	KINSLEY LANE	DEAD END	Crackseal	727	92	\$375	349.65
MAIN STREET	HASTINGS STREET	260' S OF HASTINGS STREET	Crackseal	260	90	\$358	892.85
MAIN STREET	260' S OF HASTINGS ST	MAPLE STREET	Crackseal	785	90	\$1,080	892.85
MAPLE LEAF LANE	PUDDINGSTONE LANE	DEAD END	Crackseal	332	92	\$342	349.65
MAPLE STREET	HASTINGS STREET	MAIN STREET	Crackseal	1,499	90	\$1,546	892.85
MORRISON DRIVE (EXT)	MORRISON DRIVE	CUL DE SAC	Crackseal	360	92	\$606	349.65
MOWRY STREET	90' N OF SANDRA CIRCLE (S)	630' S OF SANDRA CIRCLE (S)	Crackseal	717	92	\$617	349.65
MYRTLE STREET	MILLVILLE STREET	DEAD END	Crackseal	409	92	\$387	349.65
NORTH AVENUE	MAIN STREET	150' N OF MAIN STREET	Crackseal	153	90	\$210	892.85
SOUTHWICK STREET	TOWN LINE (N)	50' E OF ASYLUM STREET	Crackseal	1,510	92	\$1,168	349.65
<b>Year: 2023</b>							
ASYLUM STREET (Y INT)	PLEASANT STREET	ASYLUM STREET	Crackseal	118	92	\$63	349.65
BATES STREET	CAPE ROAD	BELLINGHAM STREET	Crackseal	3,021	92	\$2,701	349.65
BATES STREET	BELLINGHAM STREET	THAYER ROAD	Crackseal	3,888	92	\$4,171	874.12

**Scenario: CH 90 \$273K**

<u>Street Name</u>	<u>From</u>	<u>To</u>	<u>Alternative</u>	<u>Length (ft)</u>	<u>PCI</u>	<u>Repair Cost</u>	<u>Benefit Value</u>
BLACKSTONE STREET	WESLEY DRIVE	1950' S OF WESLEY STREET	Reclaim & Pave 4" HMA	1,957	31	\$163,469	50.55
HARTFORD AVENUE EAST	NECK HILL ROAD	500' E OF MENFI WAY	Crackseal	3,295	92	\$4,123	874.12
JOSEPH ROAD	EDWARD ROAD	CUL DE SAC	Reclaim & Pave 4" HMA	395	35	\$62,485	44.78
LEONE LANE	LOWELL DRIVE	CUL DE SAC	Crackseal	333	92	\$298	349.65
MAIN STREET	MAPLE STREET	250' S OF MAPLE STREET	Reclaim & Pave 4" HMA	248	40	\$28,290	39.19
NORTHBRIDGE STREET	NORTH AVENUE	FOREST PARK DRIVE	Crackseal	2,781	92	\$2,735	874.12
NORTHBRIDGE STREET	LOWELL DRIVE	TOWN LINE	Crackseal	3,868	92	\$4,149	874.12
<b>Year: 2024</b>							
BARROWS ROAD	CAPE ROAD	CUL DE SAC	Reclaim & Pave 4" HMA	813	31	\$109,882	50.55
BELLINGHAM STREET	150' E OF HARTFORD AVENUE	CARBY DRIVE	Crackseal	3,913	92	\$4,366	874.12
BELLINGHAM STREET	CARBY DRIVE	CAPE ROAD	Crackseal	3,592	92	\$4,008	874.12
FREEMAN PLACE	PARK STREET	CUL DE SAC	Crackseal	675	92	\$1,048	349.65
HOPEDALE STREET	460' EAST OF TRASK ROAD	TOWN LINE	Crackseal	1,387	92	\$1,547	349.65
NORTH AVENUE	150' N OF MAIN STREET	WESTERN CIRCLE AVENUE	Crackseal	1,946	92	\$2,895	874.12
NORTH AVENUE	WESTERN CIRCLE AVENUE	ESTY ROAD	Crackseal	3,182	92	\$4,142	874.12
PARK STREET	330' W OF PLEASANT STREET	TOWN LINE	Crackseal	2,660	92	\$2,473	349.65
PLEASANT STREET	800' W OF MILLVILLE STREET	PARK STREET	Crackseal	3,973	92	\$4,248	349.65
PLEASANT STREET	MILLVILLE STREET	800' W OF MILLVILLE STREET	Crackseal	801	92	\$782	349.65
PROVIDENCE STREET	510' N OF HARTFORD AVENUE E	280' S OF HARTFORD AVENUE E	Crackseal	790	92	\$1,102	874.12
PROVIDENCE STREET	280' S OF HARTFORD AVENUE E	ASHKINS DRIVE	Crackseal	2,665	92	\$3,469	874.12
PROVIDENCE STREET	ASHKINS DRIVE	KING PHILLIP PATH	Crackseal	1,957	92	\$2,548	874.12
PROVIDENCE STREET	KING PHILLIP PATH	DEER HILL DRIVE	Crackseal	3,544	92	\$4,613	874.12
PROVIDENCE STREET	DEER HILL DRIVE	TOWN LINE	Crackseal	2,985	92	\$3,886	874.12
SOUTHWICK STREET	50' E OF ASYLUM STREET	TOWN LINE (S)	Reclaim & Pave 4" HMA	1,635	31	\$116,226	50.55
<b>Year: 2025</b>							
BRACCI LANE	TOWN LINE	DEAD END	Crackseal	503	92	\$486	349.65
CEMETERY STREET	HARTFORD AVENUE EAST	PROVIDENCE STREET	Crackseal	2,495	90	\$2,654	892.85
HARRINGTON STREET	MILFORD STREET	DEAD END	Reclaim & Pave 4" HMA	552	34	\$40,816	46.10
MAIN STREET (Y INT)	MAIN STREET	MILFORD STREET	Crackseal	208	92	\$261	349.65
THORNTON STREET	UXBRIDGE ROAD	HARTFORD AVENUE WEST	Reclaim & Pave 4" HMA	2,850	31	\$210,737	50.55
WASHINGTON STREET	HASTINGS STREET	2500' N OF HASTINGS STREET	Crackseal	2,500	92	\$2,901	349.65
WASHINGTON STREET	2500' N OF HASTINGS STREET	NORTHBRIDGE ROAD	Crackseal	3,024	92	\$3,509	349.65

**CH 90 \$273K**

**39.80 Miles \$ 2,686,839**



# Appendix F

## \$473,000/Year Scenario Results

List of the system generated candidate projects based on the \$473,000 per year budget scenario.

# Budget Scenario Results Report

Scenario: \$473k/Year

<u>Street Name</u>	<u>From</u>	<u>To</u>	<u>Alternative</u>	<u>Length (ft)</u>	<u>PCI</u>	<u>Repair Cost</u>	<u>Benefit Value</u>
<b>Year: 2016</b>							
ASYLUM STREET (Y INT)	PLEASANT STREET	ASYLUM STREET	Cr.Seal, Level & Double Chip	118	72	\$1,717	23.07
BATES STREET	THAYER ROAD	TOWN LINE	Cr.Seal & RubberChip	1,127	82	\$18,210	60.75
BELLINGHAM STREET	HARTFORD AVENUE EAST	150' E OF HARTFORD AVENUE E	Crackseal	150	86	\$131	932.83
BICKNELL DRIVE	240' N OF NECK HILL ROAD	NECK HILL ROAD	Cr.Seal & Chipseal	240	74	\$2,735	34.44
CAPE ROAD	450' S OF HARTFORD AVENUE E.	BORROWS ROAD	Cr.Seal, Level & Double RubberChip	2,561	66	\$111,740	116.59
CAPE ROAD	BORROWS ROAD	TOWN LINE	Cr.Seal, Level & Double RubberChip	2,489	66	\$108,607	116.59
DUDLEY ROAD	WESTCOTT ROAD	BALLOU ROAD	Crackseal	2,870	92	\$2,509	349.65
HARTFORD AVENUE EAST	500' EAST OF MENFI WAY	TOWN LINE	Crackseal	2,331	88	\$2,821	912.40
MAIN STREET	260' S OF HASTINGS ST	MAPLE STREET	Reclaim & Pave 5"	785	51	\$86,286	63.93
MAPLE STREET (Y INT)	MAIN STREET	MAPLE STREET	Cr.Seal & RubberChip	125	75	\$2,357	66.40
MILLVILLE STREET	UXBRIDGE ROAD	MILLVILLE STREET	Cr.Seal & RubberChip	433	73	\$7,577	68.22
MILLVILLE STREET	Y-INTERSECTION	WILLOWBROOK LANE	Crackseal	4,234	92	\$3,559	874.12
MILLVILLE STREET	WILLOWBROOK LANE	LOVELL ROAD	Crackseal	4,015	92	\$3,375	874.12
MILLVILLE STREET	LOVELL STREET	2085' N OF WOOD DRIVE	Crackseal	3,437	87	\$2,889	922.50
MILLVILLE STREET	2085' N OF WOOD DRIVE	TOWN LINE	Crackseal	4,082	87	\$3,431	922.50
NORTH AVENUE	ETSY ROAD	MISCOE ROAD	Cr.Seal & RubberChip	3,595	73	\$60,528	68.22
NORTH AVENUE	MISCOE ROAD	TOWN LINE	Cr.Seal & RubberChip	2,682	73	\$45,160	68.22
NORTHBRIDGE STREET (Y	NORTHBRIDGE ROAD	NORTH AVENUE	Cr.Seal & RubberChip	155	85	\$2,297	58.61
PROVIDENCE STREET	1325' N OF MORRISON DRIVE	510' N OF HARTFORD AVENUE V	Crackseal	2,172	87	\$2,191	922.50
PROVIDENCE STREET (Y IN	PROVIDENCE STREET	HARTFORD AV	Cr.Seal, Level & Double RubberChip	116	61	\$4,050	63.06
<b>Year: 2017</b>							
CAPE ROAD	HARTFORD AVENUE EAST	450' S OF HARTFORD AVENUE E	Crackseal	450	91	\$566	1766.78
HARTFORD AVENUE EAST	PROVIDENCE STREET	400' EAST OF PROVIDENCE STR	Crackseal	402	91	\$421	883.39
HARTFORD AVENUE WEST	UXBRIDGE ROAD	OLD SAWMILL RD	Crackseal	2,658	91	\$2,973	883.39
HARTFORD AVENUE WEST	OLD SAWMILL RD	THORNTON STREET	Crackseal	1,963	91	\$2,196	883.39
HARTFORD AVENUE WEST	THORNTON STREET	TOWN LINE	Crackseal	2,722	91	\$3,045	883.39
MAIN STREET	HASTINGS STREET	260' S OF HASTINGS STREET	Crackseal	260	90	\$291	892.85
MAPLE LEAF LANE	PUDDINGSTONE LANE	DEAD END	Crackseal	332	91	\$279	353.35
MAPLE STREET	HASTINGS STREET	MAIN STREET	Reclaim & Pave 5"	1,499	50	\$128,515	65.21
MYRTLE STREET	MILLVILLE STREET	DEAD END	Crackseal	409	91	\$315	353.35

**Scenario: \$473k/Year**

<u>Street Name</u>	<u>From</u>	<u>To</u>	<u>Alternative</u>	<u>Length (ft)</u>	<u>PCI</u>	<u>Repair Cost</u>	<u>Benefit Value</u>
NORTH AVENUE	MAIN STREET	150' N OF MAIN STREET	Crackseal	153	91	\$171	883.39
NORTHBRIDGE STREET	NORTH AVENUE	FOREST PARK DRIVE	Cr.Seal & RubberChip	2,781	79	\$42,856	63.05
PROVIDENCE STREET	GEORGE STREET	1325' N OF MORRISON DRIVE	Reclaim & Pave 5"	2,880	47	\$288,035	69.36
SOUTHWICK STREET	TOWN LINE (N)	50' E OF ASYLUM STREET	Crackseal	1,510	91	\$950	353.35
<b>Year: 2018</b>							
BATES STREET	BELLINGHAM STREET	THAYER ROAD	Cr.Seal & RubberChip	3,888	75	\$67,976	66.40
BELLINGHAM STREET	150' E OF HARTFORD AVENUE	CARBY DRIVE	Cr.Seal & RubberChip	3,913	77	\$68,409	64.68
BELLINGHAM STREET	CARBY DRIVE	CAPE ROAD	Cr.Seal & RubberChip	3,592	77	\$62,799	64.68
HARTFORD AVENUE EAST	WARFIELD ROAD	NECK HILL ROAD	Cr.Seal & RubberChip	2,029	79	\$32,519	63.05
HARTFORD AVENUE EAST	NECK HILL ROAD	500' E OF MENFI WAY	Cr.Seal & RubberChip	3,295	74	\$67,198	67.30
NORTH AVENUE	150' N OF MAIN STREET	WESTERN CIRCLE AVENUE	Cr.Seal & RubberChip	1,946	79	\$45,370	63.05
NORTHBRIDGE STREET	FOREST PARK DRIVE	LOWELL DRIVE	Cr.Seal & RubberChip	2,088	75	\$33,459	66.40
NORTHBRIDGE STREET	LOWELL DRIVE	TOWN LINE	Cr.Seal & RubberChip	3,868	74	\$67,620	67.30
OLD TAFT AVENUE	TAFT AVENUE	UXBRIDGE ROAD	Reclaim & Pave 4" HMA	698	45	\$25,878	34.84
<b>Year: 2019</b>							
BRACCI LANE	TOWN LINE	DEAD END	Reclaim & Pave 4" HMA	503	39	\$32,324	40.19
CEMETERY STREET	HARTFORD AVENUE EAST	PROVIDENCE STREET	Reclaim & Pave 5"	2,495	58	\$212,069	56.22
FREEMAN PLACE	PARK STREET	CUL DE SAC	Crackseal	675	92	\$853	349.65
HARTFORD AVENUE EAST	400' E OF PROVIDENCE STREET	WARFIELD ROAD	Cr.Seal & RubberChip	3,565	75	\$59,420	66.40
INMAN HILL ROAD	BLACKISTONE STREET	DEAD END	Reclaim & Pave 4" HMA	2,083	32	\$93,700	48.97
KINSLEY LANE (EXT)	KINSLEY LANE	DEAD END	Cr.Seal & Chipseal	727	76	\$4,300	33.53
NORTH AVENUE	WESTERN CIRCLE AVENUE	ESTY ROAD	Cr.Seal & RubberChip	3,182	75	\$67,499	66.40
<b>Year: 2020</b>							
BARROWS ROAD	CAPE ROAD	CUL DE SAC	Reclaim & Pave 4" HMA	813	34	\$92,964	46.10
BLACKSTONE STREET	WESLEY DRIVE	1950' S OF WESLEY STREET	Reclaim & Pave 4" HMA	1,957	32	\$143,845	48.97
BLACKSTONE STREET	CARPENTER HILL ROAD (N)	100' S OF LOVELL LANE	Reclaim & Pave 4" HMA	1,369	32	\$118,951	48.97
CALUMET CIRCLE	KING PHILLIP PATH	CUL DE SAC LOOP	Cr.Seal, Level & Double Chip	297	68	\$10,954	24.43
MAIN STREET (Y INT)	MAIN STREET	MILFORD STREET	Crackseal	208	92	\$213	349.65
SOUTHWICK STREET	50' E OF ASYLUM STREET	TOWN LINE (S)	Reclaim & Pave 4" HMA	1,635	32	\$98,332	48.97
WASHINGTON STREET	HASTINGS STREET	2500' N OF HASTINGS STREET	Crackseal	2,500	92	\$2,360	349.65
WASHINGTON STREET	2500' N OF HASTINGS STREET	NORTHBRIDGE ROAD	Crackseal	3,024	92	\$2,855	349.65
<b>Year: 2021</b>							
ASYLUM STREET	300' S OF PLEASANT ST	100' S OF HOUSE #28	Reclaim & Pave 4" HMA	1,980	32	\$137,594	48.97

**Scenario: \$473k/Year**

<u>Street Name</u>	<u>From</u>	<u>To</u>	<u>Alternative</u>	<u>Length (ft)</u>	<u>PCI</u>	<u>Repair Cost</u>	<u>Benefit Value</u>
ASYLUM STREET (Y INT)	PLEASANT STREET	ASYLUM STREET	Crackseal	118	92	\$58	349.65
BATES STREET	THAYER ROAD	TOWN LINE	Crackseal	1,127	92	\$1,106	874.12
BELLINGHAM STREET	HARTFORD AVENUE EAST	150' E OF HARTFORD AVENUE E	Crackseal	150	92	\$160	874.12
BICKNELL DRIVE	240' N OF NECK HILL ROAD	NECK HILL ROAD	Crackseal	240	92	\$255	349.65
CAPE ROAD	450' S OF HARTFORD AVENUE E.	BORROWS ROAD	Crackseal	2,561	90	\$3,142	1785.71
CAPE ROAD	BORROWS ROAD	TOWN LINE	Crackseal	2,489	90	\$3,054	1785.71
CROSS STREET	WOOD DR (N)	WOOD DRIVE (S)	Reclaim & Pave 4" HMA	162	47	\$14,639	33.36
DUDLEY ROAD	WESTCOTT ROAD	BALLOU ROAD	Crackseal	2,870	92	\$3,052	349.65
HARTFORD AVENUE EAST	500' EAST OF MENFI WAY	TOWN LINE	Crackseal	2,331	92	\$3,433	874.12
MAIN STREET	260' S OF HASTINGS ST	MAPLE STREET	Crackseal	785	90	\$1,028	892.85
MAPLE STREET (Y INT)	MAIN STREET	MAPLE STREET	Crackseal	125	90	\$143	892.85
MILLVILLE STREET	UXBRIDGE ROAD	MILLVILLE STREET	Crackseal	433	92	\$460	874.12
MILLVILLE STREET	Y-INTERSECTION	WILLOWBROOK LANE	Crackseal	4,234	92	\$4,330	874.12
MILLVILLE STREET	WILLOWBROOK LANE	LOVELL ROAD	Crackseal	4,015	92	\$4,106	874.12
MILLVILLE STREET	LOVELL STREET	2085' N OF WOOD DRIVE	Crackseal	3,437	92	\$3,515	874.12
MILLVILLE STREET	2085' N OF WOOD DRIVE	TOWN LINE	Crackseal	4,082	92	\$4,175	874.12
MOWRY STREET	UXBRIDGE STREET	90' N OF SANDRA CIRCLE (S)	Reclaim & Pave 4" HMA	1,219	34	\$84,711	46.10
NORTH AVENUE	ETSY ROAD	MISCOE ROAD	Crackseal	3,595	92	\$3,676	874.12
NORTH AVENUE	MISCOE ROAD	TOWN LINE	Crackseal	2,682	92	\$2,743	874.12
NORTHBRIDGE STREET (Y	NORTHBRIDGE ROAD	NORTH AVENUE	Crackseal	155	92	\$139	874.12
PROVIDENCE STREET	1325' N OF MORRISON DRIVE	510' N OF HARTFORD AVENUE V	Crackseal	2,172	92	\$2,665	874.12
PROVIDENCE STREET (Y IN	PROVIDENCE STREET	HARTFORD AV	Crackseal	116	90	\$114	892.85
THAYER ROAD	CATALPA LANE	DEAD END	Reclaim & Pave 4" HMA	2,794	33	\$135,946	47.49
TRASK ROAD	HOPEDALE STREET	DEAD END	Reclaim & Pave 4" HMA	848	36	\$53,050	43.54
<b>Year: 2022</b>							
ASYLUM STREET	100' S OF HOUSE #28	SOUTHWICK STREET	Reclaim & Pave 4" HMA	3,700	32	\$240,693	48.97
CAPE ROAD	HARTFORD AVENUE EAST	450' S OF HARTFORD AVENUE E	Crackseal	450	90	\$688	1785.71
HARTFORD AVENUE EAST	PROVIDENCE STREET	400' EAST OF PROVIDENCE STR	Crackseal	402	92	\$513	874.12
HARTFORD AVENUE WEST	UXBRIDGE ROAD	OLD SAWMILL RD	Crackseal	2,658	92	\$3,618	874.12
HARTFORD AVENUE WEST	OLD SAWMILL RD	THORNTON STREET	Crackseal	1,963	92	\$2,671	874.12
HARTFORD AVENUE WEST	THORNTON STREET	TOWN LINE	Crackseal	2,722	92	\$3,705	874.12
LEONE LANE	LOWELL DRIVE	CUL DE SAC	Reclaim & Pave 4" HMA	333	38	\$24,072	41.25
MAIN STREET	HASTINGS STREET	260' S OF HASTINGS STREET	Crackseal	260	90	\$354	892.85
MAPLE LEAF LANE	PUDDINGSTONE LANE	DEAD END	Crackseal	332	92	\$339	349.65

**Scenario: \$473k/Year**

<u>Street Name</u>	<u>From</u>	<u>To</u>	<u>Alternative</u>	<u>Length (ft)</u>	<u>PCI</u>	<u>Repair Cost</u>	<u>Benefit Value</u>
MAPLE STREET	HASTINGS STREET	MAIN STREET	Crackseal	1,499	90	\$1,530	892.85
MYRTLE STREET	MILLVILLE STREET	DEAD END	Crackseal	409	92	\$383	349.65
NORTH AVENUE	MAIN STREET	150' N OF MAIN STREET	Crackseal	153	90	\$208	892.85
NORTHBRIDGE STREET	NORTH AVENUE	FOREST PARK DRIVE	Crackseal	2,781	92	\$2,603	874.12
PROVIDENCE STREET	GEORGE STREET	1325' N OF MORRISON DRIVE	Crackseal	2,880	92	\$3,430	874.12
SOUTHWICK STREET	TOWN LINE (N)	50' E OF ASYLUM STREET	Crackseal	1,510	92	\$1,156	349.65
THORNTON STREET	UXBRIDGE ROAD	HARTFORD AVENUE WEST	Reclaim & Pave 4" HMA	2,850	33	\$185,418	47.49
<b>Year: 2023</b>							
BATES STREET	CAPE ROAD	BELLINGHAM STREET	Crackseal	3,021	92	\$2,673	349.65
BATES STREET	BELLINGHAM STREET	THAYER ROAD	Crackseal	3,888	92	\$4,128	874.12
BELLINGHAM STREET	150' E OF HARTFORD AVENUE	CARBY DRIVE	Crackseal	3,913	92	\$4,154	874.12
BELLINGHAM STREET	CARBY DRIVE	CAPE ROAD	Crackseal	3,592	92	\$3,814	874.12
DANIELS ROAD	NECK HILL ROAD E	NECK HILL ROAD (W)	Reclaim & Pave 4" HMA	2,695	33	\$273,514	47.49
HARTFORD AVENUE EAST	WARFIELD ROAD	NECK HILL ROAD	Crackseal	2,029	92	\$1,975	874.12
HARTFORD AVENUE EAST	NECK HILL ROAD	500' E OF MENFI WAY	Crackseal	3,295	92	\$4,081	874.12
MISCOE ROAD	NORTH AVENUE	DAVENPORT ROAD	Reclaim & Pave 4" HMA	520	36	\$33,228	43.54
MOWRY STREET	630' S OF SANDRA CIRCLE (S)	PARK STREET	Reclaim & Pave 4" HMA	1,729	32	\$116,990	48.97
NORTH AVENUE	150' N OF MAIN STREET	WESTERN CIRCLE AVENUE	Crackseal	1,946	92	\$2,755	874.12
NORTHBRIDGE STREET	FOREST PARK DRIVE	LOWELL DRIVE	Crackseal	2,088	92	\$2,032	874.12
NORTHBRIDGE STREET	LOWELL DRIVE	TOWN LINE	Crackseal	3,868	92	\$4,107	874.12
OLD TAFT AVENUE	TAFT AVENUE	UXBRIDGE ROAD	Crackseal	698	92	\$371	349.65
<b>Year: 2024</b>							
BRACCI LANE	TOWN LINE	DEAD END	Crackseal	503	92	\$463	349.65
CEMETERY STREET	HARTFORD AVENUE EAST	PROVIDENCE STREET	Crackseal	2,495	90	\$2,526	892.85
ESTY ROAD	NORTH AVENUE	CUL DE SAC	Reclaim & Pave 4" HMA	446	34	\$64,863	46.10
FREEMAN PLACE	PARK STREET	CUL DE SAC	Crackseal	675	92	\$1,037	349.65
GASKILL STREET	GEORGE STREET	PROVIDENCE STREET	Reclaim & Pave 4" HMA	1,474	34	\$115,253	46.10
HARTFORD AVENUE EAST	400' E OF PROVIDENCE STREET	WARFIELD ROAD	Crackseal	3,565	92	\$3,609	874.12
HOPEDALE STREET	NORTH AVENUE	460' EAST OF TRASK ROAD	Reclaim & Pave 4" HMA	1,815	33	\$170,337	47.49
INMAN HILL ROAD	BLACKISTONE STREET	DEAD END	Crackseal	2,083	92	\$1,342	349.65
JOSEPH ROAD	EDWARD ROAD	CUL DE SAC	Reclaim & Pave 4" HMA	395	34	\$64,323	46.10
KINSLEY LANE (EXT)	KINSLEY LANE	DEAD END	Crackseal	727	92	\$401	349.65
NORTH AVENUE	WESTERN CIRCLE AVENUE	ESTY ROAD	Crackseal	3,182	92	\$4,100	874.12
PARK STREET	330' W OF PLEASANT STREET	TOWN LINE	Crackseal	2,660	92	\$2,448	349.65



**Scenario: \$473k/Year**

<u>Street Name</u>	<u>From</u>	<u>To</u>	<u>Alternative</u>	<u>Length (ft)</u>	<u>PCI</u>	<u>Repair Cost</u>	<u>Benefit Value</u>
PLEASANT STREET	800' W OF MILLVILLE STREET	PARK STREET	Crackseal	3,973	92	\$4,205	349.65
PLEASANT STREET	MILLVILLE STREET	800' W OF MILLVILLE STREET	Crackseal	801	92	\$774	349.65
PROVIDENCE STREET	510' N OF HARTFORD AVENUE E	280' S OF HARTFORD AVENUE E	Crackseal	790	92	\$1,091	874.12
PROVIDENCE STREET	280' S OF HARTFORD AVENUE E	ASHKINS DRIVE	Crackseal	2,665	92	\$3,433	874.12
PROVIDENCE STREET	ASHKINS DRIVE	KING PHILLIP PATH	Crackseal	1,957	92	\$2,522	874.12
PROVIDENCE STREET	KING PHILLIP PATH	DEER HILL DRIVE	Crackseal	3,544	92	\$4,566	874.12
PROVIDENCE STREET	DEER HILL DRIVE	TOWN LINE	Crackseal	2,985	92	\$3,846	874.12
<b>Year: 2025</b>							
BARROWS ROAD	CAPE ROAD	CUL DE SAC	Crackseal	813	92	\$1,331	349.65
BLACKSTONE STREET	WESLEY DRIVE	1950' S OF WESLEY STREET	Crackseal	1,957	92	\$2,060	349.65
BLACKSTONE STREET	CARPENTER HILL ROAD (N)	100' S OF LOVELL LANE	Crackseal	1,369	92	\$1,703	349.65
CALUMET CIRCLE	KING PHILLIP PATH	CUL DE SAC LOOP	Crackseal	297	92	\$370	349.65
EDWARD ROAD	BATES STREET	EDWARD ROAD	Reclaim & Pave 4" HMA	3,010	33	\$367,142	47.49
MAIN STREET	MAPLE STREET	250' S OF MAPLE STREET	Reclaim & Pave 4" HMA	248	36	\$30,286	43.54
MAIN STREET (Y INT)	MAIN STREET	MILFORD STREET	Crackseal	208	92	\$259	349.65
POWERS ROAD	NORTH AVENUE	TOWN LINE	Reclaim & Pave 4" HMA	897	33	\$61,999	47.49
SOUTHWICK STREET	50' E OF ASYLUM STREET	TOWN LINE (S)	Crackseal	1,635	92	\$1,408	349.65
WASHINGTON STREET	HASTINGS STREET	2500' N OF HASTINGS STREET	Crackseal	2,500	92	\$2,871	349.65
WASHINGTON STREET	2500' N OF HASTINGS STREET	NORTHBRIDGE ROAD	Crackseal	3,024	92	\$3,473	349.65
<b>\$473k/Year</b>				<b>49.56 Miles</b>		<b>\$ 4,671,184</b>	



# Appendix G

## \$623,000/Year Scenario Results

List of the system generated candidate projects based on the Maintain PCI funding of \$623,000

# Budget Scenario Results Report

**Scenario: Maintain PCI \$623K**

<u>Street Name</u>	<u>From</u>	<u>To</u>	<u>Alternative</u>	<u>Length (ft)</u>	<u>PCI</u>	<u>Repair Cost</u>	<u>Benefit Value</u>
<b>Year: 2016</b>							
BELLINGHAM STREET	HARTFORD AVENUE EAST	150' E OF HARTFORD AVENUE E	Crackseal	150	86	\$133	932.83
CAPE ROAD	450' S OF HARTFORD AVENUE E	BORROWS ROAD	Cr.Seal, Level & Double RubberChip	2,561	66	\$112,898	116.59
CAPE ROAD	BORROWS ROAD	TOWN LINE	Cr.Seal, Level & Double RubberChip	2,489	66	\$109,732	116.59
DAVENPORT ROAD	MISCOE ROAD	CUL DE SAC LOOP	Cr.Seal & Chipseal	1,020	73	\$11,741	34.91
DUDLEY ROAD	WESTCOTT ROAD	BALLOU ROAD	Crackseal	2,870	92	\$2,535	349.65
HARTFORD AVENUE EAST	500' EAST OF MENFI WAY	TOWN LINE	Crackseal	2,331	88	\$2,851	912.40
MAPLE STREET (Y INT)	MAIN STREET	MAPLE STREET	Cr.Seal & RubberChip	125	75	\$2,382	66.40
MILLVILLE STREET	UXBRIDGE ROAD	MILLVILLE STREET	Cr.Seal & RubberChip	433	73	\$7,656	68.22
MILLVILLE STREET	Y-INTERSECTION	WILLOWBROOK LANE	Crackseal	4,234	92	\$3,596	874.12
MILLVILLE STREET	WILLOWBROOK LANE	LOVELL ROAD	Crackseal	4,015	92	\$3,410	874.12
MILLVILLE STREET	LOVELL STREET	2085' N OF WOOD DRIVE	Crackseal	3,437	87	\$2,919	922.50
MILLVILLE STREET	2085' N OF WOOD DRIVE	TOWN LINE	Crackseal	4,082	87	\$3,467	922.50
NORTHBRIDGE STREET (Y	NORTHBRIDGE ROAD	NORTH AVENUE	Cr.Seal & RubberChip	155	85	\$2,321	58.61
OLD TAFT AVENUE	TAFT AVENUE	UXBRIDGE ROAD	Reclaim & Pave 4" HMA	698	51	\$24,175	30.74
PROVIDENCE STREET	GEORGE STREET	1325' N OF MORRISON DRIVE	Reclaim & Pave 5"	2,880	50	\$279,834	65.21
PROVIDENCE STREET	1325' N OF MORRISON DRIVE	510' N OF HARTFORD AVENUE V	Crackseal	2,172	87	\$2,213	922.50
PROVIDENCE STREET (Y IN	PROVIDENCE STREET	HARTFORD AV	Cr.Seal, Level & Double RubberChip	116	61	\$4,092	63.06
TRASK ROAD	HOPEDALE STREET	DEAD END	Reclaim & Pave 4" HMA	848	45	\$44,056	34.84
<b>Year: 2017</b>							
ASYLUM STREET (Y INT)	PLEASANT STREET	ASYLUM STREET	Cr.Seal, Level & Double Chip	118	68	\$1,804	24.43
BATES STREET	BELLINGHAM STREET	THAYER ROAD	Cr.Seal & RubberChip	3,888	79	\$66,040	63.05
BATES STREET	THAYER ROAD	TOWN LINE	Cr.Seal & RubberChip	1,127	79	\$19,135	63.05
BRACCI LANE	TOWN LINE	DEAD END	Reclaim & Pave 4" HMA	503	43	\$30,196	36.46
CAPE ROAD	HARTFORD AVENUE EAST	450' S OF HARTFORD AVENUE E	Crackseal	450	91	\$572	1766.78
HARTFORD AVENUE EAST	PROVIDENCE STREET	400' EAST OF PROVIDENCE STR	Crackseal	402	91	\$426	883.39
HARTFORD AVENUE EAST	NECK HILL ROAD	500' E OF MENFI WAY	Cr.Seal & RubberChip	3,295	78	\$65,284	63.85
HARTFORD AVENUE WEST	UXBRIDGE ROAD	OLD SAWMILL RD	Crackseal	2,658	91	\$3,004	883.39
HARTFORD AVENUE WEST	OLD SAWMILL RD	THORNTON STREET	Crackseal	1,963	91	\$2,219	883.39
HARTFORD AVENUE WEST	THORNTON STREET	TOWN LINE	Crackseal	2,722	91	\$3,077	883.39
INMAN HILL ROAD	BLACKISTONE STREET	DEAD END	Reclaim & Pave 4" HMA	2,083	33	\$87,533	47.49

**Scenario: Maintain PCI \$623K**

<u>Street Name</u>	<u>From</u>	<u>To</u>	<u>Alternative</u>	<u>Length (ft)</u>	<u>PCI</u>	<u>Repair Cost</u>	<u>Benefit Value</u>
MAIN STREET	HASTINGS STREET	260' S OF HASTINGS STREET	Crackseal	260	90	\$294	892.85
MAIN STREET	260' S OF HASTINGS ST	MAPLE STREET	Reclaim & Pave 5"	785	47	\$90,664	69.36
MAPLE LEAF LANE	PUDDINGSTONE LANE	DEAD END	Crackseal	332	91	\$281	353.35
MAPLE STREET	HASTINGS STREET	MAIN STREET	Reclaim & Pave 5"	1,499	50	\$129,846	65.21
MYRTLE STREET	MILLVILLE STREET	DEAD END	Crackseal	409	91	\$318	353.35
NORTH AVENUE	MAIN STREET	150' N OF MAIN STREET	Crackseal	153	91	\$173	883.39
NORTHBRIDGE STREET	NORTH AVENUE	FOREST PARK DRIVE	Cr.Seal & RubberChip	2,781	79	\$43,300	63.05
NORTHBRIDGE STREET	LOWELL DRIVE	TOWN LINE	Cr.Seal & RubberChip	3,868	78	\$65,695	63.85
SOUTHWICK STREET	TOWN LINE (N)	50' E OF ASYLUM STREET	Crackseal	1,510	91	\$960	353.35
<b>Year: 2018</b>							
BELLINGHAM STREET	150' E OF HARTFORD AVENUE	CARBY DRIVE	Cr.Seal & RubberChip	3,913	77	\$69,118	64.68
BELLINGHAM STREET	CARBY DRIVE	CAPE ROAD	Cr.Seal & RubberChip	3,592	77	\$63,450	64.68
BLACKSTONE STREET	WESLEY DRIVE	1950' S OF WESLEY STREET	Reclaim & Pave 4" HMA	1,957	34	\$134,363	46.10
BLACKSTONE STREET	CARPENTER HILL ROAD (N)	100' S OF LOVELL LANE	Reclaim & Pave 4" HMA	1,369	34	\$111,111	46.10
CALUMET CIRCLE	KING PHILLIP PATH	CUL DE SAC LOOP	Cr.Seal & Chipseal	297	75	\$3,698	33.98
HARTFORD AVENUE EAST	WARFIELD ROAD	NECK HILL ROAD	Cr.Seal & RubberChip	2,029	79	\$32,856	63.05
HOPEDALE STREET	460' EAST OF TRASK ROAD	TOWN LINE	Cr.Seal & Chipseal	1,387	78	\$15,935	32.68
MOWRY STREET	90' N OF SANDRA CIRCLE (S)	630' S OF SANDRA CIRCLE (S)	Cr.Seal & Chipseal	717	75	\$6,868	33.98
NORTH AVENUE	150' N OF MAIN STREET	WESTERN CIRCLE AVENUE	Cr.Seal & RubberChip	1,946	79	\$45,840	63.05
NORTHBRIDGE STREET	FOREST PARK DRIVE	LOWELL DRIVE	Cr.Seal & RubberChip	2,088	75	\$33,806	66.40
SOUTHWICK STREET	50' E OF ASYLUM STREET	TOWN LINE (S)	Reclaim & Pave 4" HMA	1,635	34	\$91,850	46.10
<b>Year: 2019</b>							
ASYLUM STREET	300' S OF PLEASANT ST	100' S OF HOUSE #28	Reclaim & Pave 4" HMA	1,980	34	\$128,524	46.10
CEMETERY STREET	HARTFORD AVENUE EAST	PROVIDENCE STREET	Reclaim & Pave 5"	2,495	58	\$214,266	56.22
FREEMAN PLACE	PARK STREET	CUL DE SAC	Crackseal	675	92	\$861	349.65
HARTFORD AVENUE EAST	400' E OF PROVIDENCE STREET	WARFIELD ROAD	Cr.Seal & RubberChip	3,565	75	\$60,036	66.40
KINSLEY LANE (EXT)	KINSLEY LANE	DEAD END	Cr.Seal & Chipseal	727	76	\$4,344	33.53
MASSASOIT WAY	PROVIDENCE STREET	CUL DE SAC LOOP	Cr.Seal & Chipseal	1,929	75	\$24,975	33.98
NORTH AVENUE	WESTERN CIRCLE AVENUE	ESTY ROAD	Cr.Seal & RubberChip	3,182	75	\$68,199	66.40
NORTH AVENUE	MISCOE ROAD	TOWN LINE	Cr.Seal, Level & Double RubberChip	2,682	62	\$110,840	62.05
<b>Year: 2020</b>							
ASYLUM STREET	100' S OF HOUSE #28	SOUTHWICK STREET	Reclaim & Pave 4" HMA	3,700	33	\$224,852	47.49
BARROWS ROAD	CAPE ROAD	CUL DE SAC	Reclaim & Pave 4" HMA	813	34	\$93,928	46.10
BLUEBERRY DRIVE	VINCENT ROAD €	VINCENT ROAD (W)	Cr.Seal, Level & Double Chip	2,954	71	\$105,846	23.40

**Scenario: Maintain PCI \$623K**

<u>Street Name</u>	<u>From</u>	<u>To</u>	<u>Alternative</u>	<u>Length (ft)</u>	<u>PCI</u>	<u>Repair Cost</u>	<u>Benefit Value</u>
CADMAN ROAD	NORTHBRIDGE ROAD	800' S OF LEONARD ROAD	Cr.Seal, Level & Double Chip	2,331	62	\$83,509	26.79
LEONE LANE	LOWELL DRIVE	CUL DE SAC	Reclaim & Pave 4" HMA	333	42	\$22,488	37.32
MAIN STREET (Y INT)	MAIN STREET	MILFORD STREET	Crackseal	208	92	\$215	349.65
MORRISON DRIVE (EXT)	MORRISON DRIVE	CUL DE SAC	Cr.Seal, Level & Double Chip	360	65	\$20,200	25.55
VINCENT ROAD	750' N OF BUTLER ROAD	BUTLER ROAD	Cr.Seal, Level & Double Chip	750	72	\$26,867	23.07
WASHINGTON STREET	HASTINGS STREET	2500' N OF HASTINGS STREET	Crackseal	2,500	92	\$2,384	349.65
WASHINGTON STREET	2500' N OF HASTINGS STREET	NORTHBRIDGE ROAD	Crackseal	3,024	92	\$2,884	349.65
<b>Year: 2021</b>							
BELLINGHAM STREET	HARTFORD AVENUE EAST	150' E OF HARTFORD AVENUE E	Crackseal	150	92	\$161	874.12
CAPE ROAD	450' S OF HARTFORD AVENUE E	BORROWS ROAD	Crackseal	2,561	90	\$3,175	1785.71
CAPE ROAD	BORROWS ROAD	TOWN LINE	Crackseal	2,489	90	\$3,086	1785.71
DAVENPORT ROAD	MISCOE ROAD	CUL DE SAC LOOP	Crackseal	1,020	92	\$1,096	349.65
DUDLEY ROAD	WESTCOTT ROAD	BALLOU ROAD	Crackseal	2,870	92	\$3,084	349.65
HARTFORD AVENUE EAST	500' EAST OF MENFI WAY	TOWN LINE	Crackseal	2,331	92	\$3,468	874.12
KING PHILIP PATH	PROVIDENCE STREET	MASSASOIT WAY	Cr.Seal, Level & Double Chip	3,588	67	\$139,051	24.79
LOVELL STREET	BLACKISTONE STREET	MILLVILLE STREET	Cr.Seal, Level & Double Chip	2,951	68	\$87,972	24.43
MAPLE STREET (Y INT)	MAIN STREET	MAPLE STREET	Crackseal	125	90	\$145	892.85
MILLVILLE STREET	UXBRIDGE ROAD	MILLVILLE STREET	Crackseal	433	92	\$465	874.12
MILLVILLE STREET	Y-INTERSECTION	WILLOWBROOK LANE	Crackseal	4,234	92	\$4,375	874.12
MILLVILLE STREET	WILLOWBROOK LANE	LOVELL ROAD	Crackseal	4,015	92	\$4,149	874.12
MILLVILLE STREET	LOVELL STREET	2085' N OF WOOD DRIVE	Crackseal	3,437	92	\$3,551	874.12
MILLVILLE STREET	2085' N OF WOOD DRIVE	TOWN LINE	Crackseal	4,082	92	\$4,218	874.12
MISCOE ROAD	NORTH AVENUE	DAVENPORT ROAD	Reclaim & Pave 4" HMA	520	40	\$31,041	39.19
NORTHBRIDGE STREET (Y	NORTHBRIDGE ROAD	NORTH AVENUE	Crackseal	155	92	\$141	874.12
OLD TAFT AVENUE	TAFT AVENUE	UXBRIDGE ROAD	Crackseal	698	92	\$346	349.65
PROVIDENCE STREET	GEORGE STREET	1325' N OF MORRISON DRIVE	Crackseal	2,880	92	\$3,332	874.12
PROVIDENCE STREET	1325' N OF MORRISON DRIVE	510' N OF HARTFORD AVENUE V	Crackseal	2,172	92	\$2,693	874.12
PROVIDENCE STREET (Y IN	PROVIDENCE STREET	HARTFORD AV	Crackseal	116	90	\$115	892.85
THAYER ROAD	CATALPA LANE	DEAD END	Reclaim & Pave 4" HMA	2,794	33	\$137,355	47.49
THORNTON STREET	UXBRIDGE ROAD	HARTFORD AVENUE WEST	Reclaim & Pave 4" HMA	2,850	34	\$180,139	46.10
TRASK ROAD	HOPEDALE STREET	DEAD END	Crackseal	848	92	\$631	349.65
<b>Year: 2022</b>							
ASYLUM STREET (Y INT)	PLEASANT STREET	ASYLUM STREET	Crackseal	118	92	\$61	349.65
BATES STREET	BELLINGHAM STREET	THAYER ROAD	Crackseal	3,888	92	\$4,011	874.12

**Scenario: Maintain PCI \$623K**

<u>Street Name</u>	<u>From</u>	<u>To</u>	<u>Alternative</u>	<u>Length (ft)</u>	<u>PCI</u>	<u>Repair Cost</u>	<u>Benefit Value</u>
BATES STREET	THAYER ROAD	TOWN LINE	Crackseal	1,127	92	\$1,162	874.12
BRACCI LANE	TOWN LINE	DEAD END	Crackseal	503	92	\$432	349.65
CAPE ROAD	HARTFORD AVENUE EAST	450' S OF HARTFORD AVENUE E	Crackseal	450	90	\$695	1785.71
DANIELS ROAD	NECK HILL ROAD E	NECK HILL ROAD (W)	Reclaim & Pave 4" HMA	2,695	33	\$265,726	47.49
GEORGE STREET	PROVIDENCE STREET	NECK HILL ROAD	Cr.Seal, Level & Double RubberChip	2,845	62	\$126,990	24.82
GEORGE STREET	NECK HILL ROAD	MILL STREET	Cr.Seal, Level & Double RubberChip	2,025	65	\$82,826	23.67
HARTFORD AVENUE EAST	PROVIDENCE STREET	400' EAST OF PROVIDENCE STR	Crackseal	402	92	\$518	874.12
HARTFORD AVENUE EAST	NECK HILL ROAD	500' E OF MENFI WAY	Crackseal	3,295	92	\$3,965	874.12
HARTFORD AVENUE WEST	UXBRIDGE ROAD	OLD SAWMILL RD	Crackseal	2,658	92	\$3,655	874.12
HARTFORD AVENUE WEST	OLD SAWMILL RD	THORNTON STREET	Crackseal	1,963	92	\$2,699	874.12
HARTFORD AVENUE WEST	THORNTON STREET	TOWN LINE	Crackseal	2,722	92	\$3,743	874.12
INMAN HILL ROAD	BLACKISTONE STREET	DEAD END	Crackseal	2,083	92	\$1,253	349.65
MAIN STREET	HASTINGS STREET	260' S OF HASTINGS STREET	Crackseal	260	90	\$358	892.85
MAIN STREET	260' S OF HASTINGS ST	MAPLE STREET	Crackseal	785	90	\$1,080	892.85
MAIN STREET	MAPLE STREET	250' S OF MAPLE STREET	Reclaim & Pave 4" HMA	248	42	\$27,203	37.32
MAPLE LEAF LANE	PUDDINGSTONE LANE	DEAD END	Crackseal	332	92	\$342	349.65
MAPLE STREET	HASTINGS STREET	MAIN STREET	Crackseal	1,499	90	\$1,546	892.85
MYRTLE STREET	MILLVILLE STREET	DEAD END	Crackseal	409	92	\$387	349.65
NORTH AVENUE	MAIN STREET	150' N OF MAIN STREET	Crackseal	153	90	\$210	892.85
NORTHBRIDGE STREET	NORTH AVENUE	FOREST PARK DRIVE	Crackseal	2,781	92	\$2,630	874.12
NORTHBRIDGE STREET	LOWELL DRIVE	TOWN LINE	Crackseal	3,868	92	\$3,990	874.12
POWERS ROAD	NORTH AVENUE	TOWN LINE	Reclaim & Pave 4" HMA	897	36	\$55,687	43.54
SOUTHWICK STREET	TOWN LINE (N)	50' E OF ASYLUM STREET	Crackseal	1,510	92	\$1,168	349.65
<b>Year: 2023</b>							
BATES STREET	CAPE ROAD	BELLINGHAM STREET	Crackseal	3,021	92	\$2,701	349.65
BELLINGHAM STREET	150' E OF HARTFORD AVENUE	CARBY DRIVE	Crackseal	3,913	92	\$4,198	874.12
BELLINGHAM STREET	CARBY DRIVE	CAPE ROAD	Crackseal	3,592	92	\$3,853	874.12
BLACKSTONE STREET	WESLEY DRIVE	1950' S OF WESLEY STREET	Crackseal	1,957	92	\$1,924	349.65
BLACKSTONE STREET	CARPENTER HILL ROAD (N)	100' S OF LOVELL LANE	Crackseal	1,369	92	\$1,591	349.65
CALUMET CIRCLE	KING PHILLIP PATH	CUL DE SAC LOOP	Crackseal	297	92	\$345	349.65
CROSS STREET	WOOD DR (N)	WOOD DRIVE (S)	Reclaim & Pave 4" HMA	162	42	\$15,996	37.32
HARTFORD AVENUE EAST	WARFIELD ROAD	NECK HILL ROAD	Crackseal	2,029	92	\$1,995	874.12
HOPEDALE STREET	460' EAST OF TRASK ROAD	TOWN LINE	Crackseal	1,387	92	\$1,487	349.65
JOSEPH ROAD	EDWARD ROAD	CUL DE SAC	Reclaim & Pave 4" HMA	395	35	\$62,485	44.78

**Scenario: Maintain PCI \$623K**

<u>Street Name</u>	<u>From</u>	<u>To</u>	<u>Alternative</u>	<u>Length (ft)</u>	<u>PCI</u>	<u>Repair Cost</u>	<u>Benefit Value</u>
MOWRY STREET	UXBRIDGE STREET	90' N OF SANDRA CIRCLE (S)	Reclaim & Pave 4" HMA	1,219	32	\$92,568	48.97
MOWRY STREET	90' N OF SANDRA CIRCLE (S)	630' S OF SANDRA CIRCLE (S)	Crackseal	717	92	\$641	349.65
MOWRY STREET	630' S OF SANDRA CIRCLE (S)	PARK STREET	Reclaim & Pave 4" HMA	1,729	32	\$118,202	48.97
NORTH AVENUE	150' N OF MAIN STREET	WESTERN CIRCLE AVENUE	Crackseal	1,946	92	\$2,784	874.12
NORTHBRIDGE STREET	FOREST PARK DRIVE	LOWELL DRIVE	Crackseal	2,088	92	\$2,053	874.12
SOUTHWICK STREET	50' E OF ASYLUM STREET	TOWN LINE (S)	Crackseal	1,635	92	\$1,315	349.65
TOWER ROAD	MILLVILLE STREET	DEAD END	Reclaim & Pave 4" HMA	965	35	\$58,638	44.78
<b>Year: 2024</b>							
ASYLUM STREET	300' S OF PLEASANT ST	100' S OF HOUSE #28	Crackseal	1,980	92	\$1,841	349.65
CEMETERY STREET	HARTFORD AVENUE EAST	PROVIDENCE STREET	Crackseal	2,495	90	\$2,552	892.85
ESTY ROAD	NORTH AVENUE	CUL DE SAC	Reclaim & Pave 4" HMA	446	34	\$65,535	46.10
FREEMAN PLACE	PARK STREET	CUL DE SAC	Crackseal	675	92	\$1,048	349.65
HARRINGTON STREET	MILFORD STREET	DEAD END	Reclaim & Pave 4" HMA	552	35	\$39,248	44.78
HARTFORD AVENUE EAST	400' E OF PROVIDENCE STREET	WARFIELD ROAD	Crackseal	3,565	92	\$3,646	874.12
HOPEDALE STREET	NORTH AVENUE	460' EAST OF TRASK ROAD	Reclaim & Pave 4" HMA	1,815	33	\$172,102	47.49
KINSLEY LANE (EXT)	KINSLEY LANE	DEAD END	Crackseal	727	92	\$406	349.65
MASSASOIT WAY	PROVIDENCE STREET	CUL DE SAC LOOP	Crackseal	1,929	92	\$2,332	349.65
NORTH AVENUE	WESTERN CIRCLE AVENUE	ESTY ROAD	Crackseal	3,182	92	\$4,142	874.12
NORTH AVENUE	MISCOE ROAD	TOWN LINE	Crackseal	2,682	92	\$3,117	874.12
PARK STREET	330' W OF PLEASANT STREET	TOWN LINE	Crackseal	2,660	92	\$2,473	349.65
PLEASANT STREET	800' W OF MILLVILLE STREET	PARK STREET	Crackseal	3,973	92	\$4,248	349.65
PLEASANT STREET	MILLVILLE STREET	800' W OF MILLVILLE STREET	Crackseal	801	92	\$782	349.65
PROVIDENCE STREET	510' N OF HARTFORD AVENUE E	280' S OF HARTFORD AVENUE E	Crackseal	790	92	\$1,102	874.12
PROVIDENCE STREET	280' S OF HARTFORD AVENUE E	ASHKINS DRIVE	Crackseal	2,665	92	\$3,469	874.12
PROVIDENCE STREET	ASHKINS DRIVE	KING PHILLIP PATH	Crackseal	1,957	92	\$2,548	874.12
PROVIDENCE STREET	KING PHILLIP PATH	DEER HILL DRIVE	Crackseal	3,544	92	\$4,613	874.12
PROVIDENCE STREET	DEER HILL DRIVE	TOWN LINE	Crackseal	2,985	92	\$3,886	874.12
WEST HILL ROAD	870' E OF TOWN LINE	TOWN LINE	Reclaim & Pave 4" HMA	869	34	\$68,670	46.10
<b>Year: 2025</b>							
ASYLUM STREET	100' S OF HOUSE #28	SOUTHWICK STREET	Crackseal	3,700	92	\$3,220	349.65
BARROWS ROAD	CAPE ROAD	CUL DE SAC	Crackseal	813	92	\$1,345	349.65
BICKNELL DRIVE	240' N OF NECK HILL ROAD	NECK HILL ROAD	Reclaim & Pave 4" HMA	240	44	\$25,636	35.63
BLUEBERRY DRIVE	VINCENT ROAD €	VINCENT ROAD (W)	Crackseal	2,954	92	\$3,570	349.65
CADMAN ROAD	NORTHBRIDGE ROAD	800' S OF LEONARD ROAD	Crackseal	2,331	92	\$2,817	349.65

**Scenario: Maintain PCI \$623K**

<u>Street Name</u>	<u>From</u>	<u>To</u>	<u>Alternative</u>	<u>Length (ft)</u>	<u>PCI</u>	<u>Repair Cost</u>	<u>Benefit Value</u>
CHAPIN COURT	WOOD DRIVE	CUL DE SAC	Reclaim & Pave 4" HMA	539	34	\$72,245	46.10
GASKILL STREET	GEORGE STREET	PROVIDENCE STREET	Reclaim & Pave 4" HMA	1,474	33	\$121,102	47.49
LEONE LANE	LOWELL DRIVE	CUL DE SAC	Crackseal	333	92	\$322	349.65
MAIN STREET (Y INT)	MAIN STREET	MILFORD STREET	Crackseal	208	92	\$261	349.65
MEGAN COURT	WHITE ROAD	CUL DE SAC LOOP	Reclaim & Pave 4" HMA	1,108	33	\$118,341	47.49
MORRISON DRIVE (EXT)	MORRISON DRIVE	CUL DE SAC	Crackseal	360	92	\$681	349.65
VINCENT ROAD	750' N OF BUTLER ROAD	BUTLER ROAD	Crackseal	750	92	\$906	349.65
WASHINGTON STREET	HASTINGS STREET	2500' N OF HASTINGS STREET	Crackseal	2,500	92	\$2,901	349.65
WASHINGTON STREET	2500' N OF HASTINGS STREET	NORTHBRIDGE ROAD	Crackseal	3,024	92	\$3,509	349.65

**Maintain PCI \$623K**

**56.14 Miles \$ 5,358,466**





# Appendix H

## \$973,000/Year Scenario Results

List of the system generated candidate projects based on the Improve PCI funding of \$973,000

# Budget Scenario Results Report

Scenario: Improve PCI \$973K

<u>Street Name</u>	<u>From</u>	<u>To</u>	<u>Alternative</u>	<u>Length (ft)</u>	<u>PCI</u>	<u>Repair Cost</u>	<u>Benefit Value</u>
<b>Year: 2016</b>							
BELLINGHAM STREET	HARTFORD AVENUE EAST	150' E OF HARTFORD AVENUE E	Crackseal	150	86	\$133	932.83
BRACCI LANE	TOWN LINE	DEAD END	Reclaim & Pave 4" HMA	503	46	\$29,036	34.08
CAPE ROAD	450' S OF HARTFORD AVENUE E	BORROWS ROAD	Cr.Seal, Level & Double RubberChip	2,561	66	\$112,898	116.59
CAPE ROAD	BORROWS ROAD	TOWN LINE	Cr.Seal, Level & Double RubberChip	2,489	66	\$109,732	116.59
DAVENPORT ROAD	MISCOE ROAD	CUL DE SAC LOOP	Cr.Seal & Chipseal	1,020	73	\$11,741	34.91
DUDLEY ROAD	WESTCOTT ROAD	BALLOU ROAD	Crackseal	2,870	92	\$2,535	349.65
HARTFORD AVENUE EAST	500' EAST OF MENFI WAY	TOWN LINE	Crackseal	2,331	88	\$2,851	912.40
INMAN HILL ROAD	BLACKISTONE STREET	DEAD END	Reclaim & Pave 4" HMA	2,083	34	\$84,169	46.10
MAIN STREET	260' S OF HASTINGS ST	MAPLE STREET	Reclaim & Pave 5"	785	51	\$87,180	63.93
MAPLE STREET	HASTINGS STREET	MAIN STREET	Reclaim & Pave 5"	1,499	54	\$124,856	60.38
MAPLE STREET (Y INT)	MAIN STREET	MAPLE STREET	Cr.Seal & RubberChip	125	75	\$2,382	66.40
MILLVILLE STREET	UXBRIDGE ROAD	MILLVILLE STREET	Cr.Seal & RubberChip	433	73	\$7,656	68.22
MILLVILLE STREET	Y-INTERSECTION	WILLOWBROOK LANE	Crackseal	4,234	92	\$3,596	874.12
MILLVILLE STREET	WILLOWBROOK LANE	LOVELL ROAD	Crackseal	4,015	92	\$3,410	874.12
MILLVILLE STREET	LOVELL STREET	2085' N OF WOOD DRIVE	Crackseal	3,437	87	\$2,919	922.50
MILLVILLE STREET	2085' N OF WOOD DRIVE	TOWN LINE	Crackseal	4,082	87	\$3,467	922.50
NORTHBRIDGE STREET (Y	NORTHBRIDGE ROAD	NORTH AVENUE	Cr.Seal & RubberChip	155	85	\$2,321	58.61
PROVIDENCE STREET	GEORGE STREET	1325' N OF MORRISON DRIVE	Reclaim & Pave 5"	2,880	50	\$279,834	65.21
PROVIDENCE STREET	1325' N OF MORRISON DRIVE	510' N OF HARTFORD AVENUE V	Crackseal	2,172	87	\$2,213	922.50
PROVIDENCE STREET (Y IN	PROVIDENCE STREET	HARTFORD AV	Cr.Seal, Level & Double RubberChip	116	61	\$4,092	63.06
SOUTHWICK STREET	50' E OF ASYLUM STREET	TOWN LINE (S)	Reclaim & Pave 4" HMA	1,635	37	\$84,925	42.36
<b>Year: 2017</b>							
ASYLUM STREET	300' S OF PLEASANT ST	100' S OF HOUSE #28	Reclaim & Pave 4" HMA	1,980	36	\$118,834	43.54
ASYLUM STREET	100' S OF HOUSE #28	SOUTHWICK STREET	Reclaim & Pave 4" HMA	3,700	37	\$199,887	42.36
ASYLUM STREET (Y INT)	PLEASANT STREET	ASYLUM STREET	Cr.Seal, Level & Double Chip	118	68	\$1,804	24.43
BATES STREET	BELLINGHAM STREET	THAYER ROAD	Cr.Seal & RubberChip	3,888	79	\$66,040	63.05
BATES STREET	THAYER ROAD	TOWN LINE	Cr.Seal & RubberChip	1,127	79	\$19,135	63.05
BLACKSTONE STREET	WESLEY DRIVE	1950' S OF WESLEY STREET	Reclaim & Pave 4" HMA	1,957	35	\$129,199	44.78
BLACKSTONE STREET	CARPENTER HILL ROAD (N)	100' S OF LOVELL LANE	Reclaim & Pave 4" HMA	1,369	35	\$106,840	44.78
CAPE ROAD	HARTFORD AVENUE EAST	450' S OF HARTFORD AVENUE E	Crackseal	450	91	\$572	1766.78

**Scenario: Improve PCI \$973K**

<u>Street Name</u>	<u>From</u>	<u>To</u>	<u>Alternative</u>	<u>Length (ft)</u>	<u>PCI</u>	<u>Repair Cost</u>	<u>Benefit Value</u>
HARTFORD AVENUE EAST	PROVIDENCE STREET	400' EAST OF PROVIDENCE STR	Crackseal	402	91	\$426	883.39
HARTFORD AVENUE EAST	NECK HILL ROAD	500' E OF MENFI WAY	Cr.Seal & RubberChip	3,295	78	\$65,284	63.85
HARTFORD AVENUE WEST	UXBRIDGE ROAD	OLD SAWMILL RD	Crackseal	2,658	91	\$3,004	883.39
HARTFORD AVENUE WEST	OLD SAWMILL RD	THORNTON STREET	Crackseal	1,963	91	\$2,219	883.39
HARTFORD AVENUE WEST	THORNTON STREET	TOWN LINE	Crackseal	2,722	91	\$3,077	883.39
MAIN STREET	HASTINGS STREET	260' S OF HASTINGS STREET	Crackseal	260	90	\$294	892.85
MAPLE LEAF LANE	PUDDINGSTONE LANE	DEAD END	Crackseal	332	91	\$281	353.35
MYRTLE STREET	MILLVILLE STREET	DEAD END	Crackseal	409	91	\$318	353.35
NORTH AVENUE	MAIN STREET	150' N OF MAIN STREET	Crackseal	153	91	\$173	883.39
NORTHBRIDGE STREET	NORTH AVENUE	FOREST PARK DRIVE	Cr.Seal & RubberChip	2,781	79	\$43,300	63.05
NORTHBRIDGE STREET	LOWELL DRIVE	TOWN LINE	Cr.Seal & RubberChip	3,868	78	\$65,695	63.85
OLD TAFT AVENUE	TAFT AVENUE	UXBRIDGE ROAD	Reclaim & Pave 4" HMA	698	48	\$25,142	32.66
SOUTHWICK STREET	TOWN LINE (N)	50' E OF ASYLUM STREET	Crackseal	1,510	91	\$960	353.35
THAYER ROAD	CATALPA LANE	DEAD END	Reclaim & Pave 4" HMA	2,794	37	\$117,412	42.36
<b>Year: 2018</b>							
BARROWS ROAD	CAPE ROAD	CUL DE SAC	Reclaim & Pave 4" HMA	813	37	\$86,837	42.36
BELLINGHAM STREET	150' E OF HARTFORD AVENUE	CARBY DRIVE	Cr.Seal & RubberChip	3,913	77	\$69,118	64.68
BELLINGHAM STREET	CARBY DRIVE	CAPE ROAD	Cr.Seal & RubberChip	3,592	77	\$63,450	64.68
CALUMET CIRCLE	KING PHILLIP PATH	CUL DE SAC LOOP	Cr.Seal & Chipseal	297	75	\$3,698	33.98
DANIELS ROAD	NECK HILL ROAD E	NECK HILL ROAD (W)	Reclaim & Pave 4" HMA	2,695	39	\$227,144	40.19
HARTFORD AVENUE EAST	WARFIELD ROAD	NECK HILL ROAD	Cr.Seal & RubberChip	2,029	79	\$32,856	63.05
HOPEDALE STREET	460' EAST OF TRASK ROAD	TOWN LINE	Cr.Seal & Chipseal	1,387	78	\$15,935	32.68
MOWRY STREET	UXBRIDGE STREET	90' N OF SANDRA CIRCLE (S)	Reclaim & Pave 4" HMA	1,219	38	\$76,086	41.25
MOWRY STREET	90' N OF SANDRA CIRCLE (S)	630' S OF SANDRA CIRCLE (S)	Cr.Seal & Chipseal	717	75	\$6,868	33.98
MOWRY STREET	630' S OF SANDRA CIRCLE (S)	PARK STREET	Reclaim & Pave 4" HMA	1,729	37	\$97,156	42.36
NORTH AVENUE	150' N OF MAIN STREET	WESTERN CIRCLE AVENUE	Cr.Seal & RubberChip	1,946	79	\$45,840	63.05
NORTHBRIDGE STREET	FOREST PARK DRIVE	LOWELL DRIVE	Cr.Seal & RubberChip	2,088	75	\$33,806	66.40
THORNTON STREET	UXBRIDGE ROAD	HARTFORD AVENUE WEST	Reclaim & Pave 4" HMA	2,850	39	\$160,139	40.19
TRASK ROAD	HOPEDALE STREET	DEAD END	Reclaim & Pave 4" HMA	848	41	\$47,648	38.23
<b>Year: 2019</b>							
CEMETERY STREET	HARTFORD AVENUE EAST	PROVIDENCE STREET	Reclaim & Pave 5"	2,495	58	\$214,266	56.22
CROSS STREET	WOOD DR (N)	WOOD DRIVE (S)	Reclaim & Pave 4" HMA	162	52	\$13,674	30.15
FREEMAN PLACE	PARK STREET	CUL DE SAC	Crackseal	675	92	\$861	349.65
HARTFORD AVENUE EAST	400' E OF PROVIDENCE STREET	WARFIELD ROAD	Cr.Seal & RubberChip	3,565	75	\$60,036	66.40

**Scenario: Improve PCI \$973K**

<u>Street Name</u>	<u>From</u>	<u>To</u>	<u>Alternative</u>	<u>Length (ft)</u>	<u>PCI</u>	<u>Repair Cost</u>	<u>Benefit Value</u>
HOPEDALE STREET	NORTH AVENUE	460' EAST OF TRASK ROAD	Reclaim & Pave 4" HMA	1,815	39	\$141,444	40.19
KINSLEY LANE (EXT)	KINSLEY LANE	DEAD END	Cr.Seal & Chipseal	727	76	\$4,344	33.53
LEONE LANE	LOWELL DRIVE	CUL DE SAC	Reclaim & Pave 4" HMA	333	44	\$21,621	35.63
MASSASOIT WAY	PROVIDENCE STREET	CUL DE SAC LOOP	Cr.Seal & Chipseal	1,929	75	\$24,975	33.98
NORTH AVENUE	WESTERN CIRCLE AVENUE	ESTY ROAD	Cr.Seal & RubberChip	3,182	75	\$68,199	66.40
NORTH AVENUE	MISCOE ROAD	TOWN LINE	Cr.Seal, Level & Double RubberChip	2,682	62	\$110,840	62.05
POWERS ROAD	NORTH AVENUE	TOWN LINE	Reclaim & Pave 4" HMA	897	41	\$49,504	38.23
QUISSETT ROAD	PROVIDENCE STREET	DEAD END	Reclaim & Pave 4" HMA	4,342	41	\$253,725	38.23
<b>Year: 2020</b>							
BLUEBERRY DRIVE	VINCENT ROAD €	VINCENT ROAD (W)	Cr.Seal, Level & Double Chip	2,954	71	\$105,846	23.40
CADMAN ROAD	NORTHBRIDGE ROAD	800' S OF LEONARD ROAD	Cr.Seal, Level & Double Chip	2,331	62	\$83,509	26.79
JOSEPH ROAD	EDWARD ROAD	CUL DE SAC	Reclaim & Pave 4" HMA	395	40	\$55,554	39.19
MAIN STREET (Y INT)	MAIN STREET	MILFORD STREET	Crackseal	208	92	\$215	349.65
MORRISON DRIVE (EXT)	MORRISON DRIVE	CUL DE SAC	Cr.Seal, Level & Double Chip	360	65	\$20,200	25.55
NORTH AVENUE	ETSY ROAD	MISCOE ROAD	Reclaim & Pave 5"	3,595	58	\$364,854	56.22
TOWER ROAD	MILLVILLE STREET	DEAD END	Reclaim & Pave 4" HMA	965	39	\$52,133	40.19
VINCENT ROAD	750' N OF BUTLER ROAD	BUTLER ROAD	Cr.Seal, Level & Double Chip	750	72	\$26,867	23.07
WASHINGTON STREET	HASTINGS STREET	2500' N OF HASTINGS STREET	Crackseal	2,500	92	\$2,384	349.65
WASHINGTON STREET	2500' N OF HASTINGS STREET	NORTHBRIDGE ROAD	Crackseal	3,024	92	\$2,884	349.65
WESLEY DRIVE	BLACKSTONE STREET	KELLEY ROAD	Reclaim & Pave 4" HMA	1,717	39	\$150,734	40.19
WEST HILL ROAD	870' E OF TOWN LINE	TOWN LINE	Reclaim & Pave 4" HMA	869	40	\$58,699	39.19
<b>Year: 2021</b>							
BELLINGHAM STREET	HARTFORD AVENUE EAST	150' E OF HARTFORD AVENUE E	Crackseal	150	92	\$161	874.12
BRACCI LANE	TOWN LINE	DEAD END	Crackseal	503	92	\$416	349.65
CAPE ROAD	450' S OF HARTFORD AVENUE E.	BORROWS ROAD	Crackseal	2,561	90	\$3,175	1785.71
CAPE ROAD	BORROWS ROAD	TOWN LINE	Crackseal	2,489	90	\$3,086	1785.71
CHAPIN COURT	WOOD DRIVE	CUL DE SAC	Reclaim & Pave 4" HMA	539	39	\$61,755	40.19
DAVENPORT ROAD	MISCOE ROAD	CUL DE SAC LOOP	Crackseal	1,020	92	\$1,096	349.65
DUDLEY ROAD	WESTCOTT ROAD	BALLOU ROAD	Crackseal	2,870	92	\$3,084	349.65
ESTY ROAD	NORTH AVENUE	CUL DE SAC	Reclaim & Pave 4" HMA	446	39	\$58,259	40.19
GASKILL STREET	GEORGE STREET	PROVIDENCE STREET	Reclaim & Pave 4" HMA	1,474	39	\$103,518	40.19
HARTFORD AVENUE EAST	500' EAST OF MENFI WAY	TOWN LINE	Crackseal	2,331	92	\$3,468	874.12
INMAN HILL ROAD	BLACKISTONE STREET	DEAD END	Crackseal	2,083	92	\$1,205	349.65
KING PHILIP PATH	PROVIDENCE STREET	MASSASOIT WAY	Cr.Seal, Level & Double Chip	3,588	67	\$139,051	24.79

**Scenario: Improve PCI \$973K**

<u>Street Name</u>	<u>From</u>	<u>To</u>	<u>Alternative</u>	<u>Length (ft)</u>	<u>PCI</u>	<u>Repair Cost</u>	<u>Benefit Value</u>
KINSLEY LANE	MILLVILLE STREET	DEAD END	Reclaim & Pave 4" HMA	3,052	37	\$192,907	42.36
LOVELL STREET	BLACKISTONE STREET	MILLVILLE STREET	Cr.Seal, Level & Double Chip	2,951	68	\$87,972	24.43
MAIN STREET	260' S OF HASTINGS ST	MAPLE STREET	Crackseal	785	90	\$1,038	892.85
MAPLE STREET	HASTINGS STREET	MAIN STREET	Crackseal	1,499	90	\$1,487	892.85
MAPLE STREET (Y INT)	MAIN STREET	MAPLE STREET	Crackseal	125	90	\$145	892.85
MILLVILLE STREET	UXBRIDGE ROAD	MILLVILLE STREET	Crackseal	433	92	\$465	874.12
MILLVILLE STREET	Y-INTERSECTION	WILLOWBROOK LANE	Crackseal	4,234	92	\$4,375	874.12
MILLVILLE STREET	WILLOWBROOK LANE	LOVELL ROAD	Crackseal	4,015	92	\$4,149	874.12
MILLVILLE STREET	LOVELL STREET	2085' N OF WOOD DRIVE	Crackseal	3,437	92	\$3,551	874.12
MILLVILLE STREET	2085' N OF WOOD DRIVE	TOWN LINE	Crackseal	4,082	92	\$4,218	874.12
NORTHBRIDGE STREET (Y	NORTHBRIDGE ROAD	NORTH AVENUE	Crackseal	155	92	\$141	874.12
PROVIDENCE STREET	GEORGE STREET	1325' N OF MORRISON DRIVE	Crackseal	2,880	92	\$3,332	874.12
PROVIDENCE STREET	1325' N OF MORRISON DRIVE	510' N OF HARTFORD AVENUE V	Crackseal	2,172	92	\$2,693	874.12
PROVIDENCE STREET (Y IN	PROVIDENCE STREET	HARTFORD AV	Crackseal	116	90	\$115	892.85
SOUTHWICK STREET	50' E OF ASYLUM STREET	TOWN LINE (S)	Crackseal	1,635	92	\$1,216	349.65
TERESA DRIVE	MARY DRIVE	CUL DE SAC	Reclaim & Pave 4" HMA	1,242	38	\$147,882	41.25
WHITE ROAD	EMERSON STREET	WESLEY DRIVE	Reclaim & Pave 4" HMA	1,415	38	\$129,187	41.25
<b>Year: 2022</b>							
ASYLUM STREET	300' S OF PLEASANT ST	100' S OF HOUSE #28	Crackseal	1,980	92	\$1,702	349.65
ASYLUM STREET	100' S OF HOUSE #28	SOUTHWICK STREET	Crackseal	3,700	92	\$2,862	349.65
ASYLUM STREET (Y INT)	PLEASANT STREET	ASYLUM STREET	Crackseal	118	92	\$61	349.65
BATES STREET	BELLINGHAM STREET	THAYER ROAD	Crackseal	3,888	92	\$4,011	874.12
BATES STREET	THAYER ROAD	TOWN LINE	Crackseal	1,127	92	\$1,162	874.12
BLACKSTONE STREET	WESLEY DRIVE	1950' S OF WESLEY STREET	Crackseal	1,957	92	\$1,850	349.65
BLACKSTONE STREET	1950' S OF WESLEY DRIVE	CARPENTER HILL ROAD (N)	Reclaim & Pave 4" HMA	3,210	37	\$257,885	42.36
BLACKSTONE STREET	CARPENTER HILL ROAD (N)	100' S OF LOVELL LANE	Crackseal	1,369	92	\$1,530	349.65
CAPE ROAD	HARTFORD AVENUE EAST	450' S OF HARTFORD AVENUE E	Crackseal	450	90	\$695	1785.71
EDWARD ROAD	BATES STREET	EDWARD ROAD	Reclaim & Pave 4" HMA	3,010	37	\$329,761	42.36
GEORGE STREET	PROVIDENCE STREET	NECK HILL ROAD	Cr.Seal, Level & Double RubberChip	2,845	62	\$126,990	24.82
GEORGE STREET	NECK HILL ROAD	MILL STREET	Cr.Seal, Level & Double RubberChip	2,025	65	\$82,826	23.67
HARTFORD AVENUE EAST	PROVIDENCE STREET	400' EAST OF PROVIDENCE STR	Crackseal	402	92	\$518	874.12
HARTFORD AVENUE EAST	NECK HILL ROAD	500' E OF MENFI WAY	Crackseal	3,295	92	\$3,965	874.12
HARTFORD AVENUE WEST	UXBRIDGE ROAD	OLD SAWMILL RD	Crackseal	2,658	92	\$3,655	874.12
HARTFORD AVENUE WEST	OLD SAWMILL RD	THORNTON STREET	Crackseal	1,963	92	\$2,699	874.12

**Scenario: Improve PCI \$973K**

<u>Street Name</u>	<u>From</u>	<u>To</u>	<u>Alternative</u>	<u>Length (ft)</u>	<u>PCI</u>	<u>Repair Cost</u>	<u>Benefit Value</u>
HARTFORD AVENUE WEST	THORNTON STREET	TOWN LINE	Crackseal	2,722	92	\$3,743	874.12
MAIN STREET	HASTINGS STREET	260' S OF HASTINGS STREET	Crackseal	260	90	\$358	892.85
MAPLE LEAF LANE	PUDDINGSTONE LANE	DEAD END	Crackseal	332	92	\$342	349.65
MEGAN COURT	WHITE ROAD	CUL DE SAC LOOP	Reclaim & Pave 4" HMA	1,108	37	\$105,202	42.36
MYRTLE STREET	MILLVILLE STREET	DEAD END	Crackseal	409	92	\$387	349.65
NORTH AVENUE	MAIN STREET	150' N OF MAIN STREET	Crackseal	153	90	\$210	892.85
NORTHBRIDGE STREET	NORTH AVENUE	FOREST PARK DRIVE	Crackseal	2,781	92	\$2,630	874.12
NORTHBRIDGE STREET	LOWELL DRIVE	TOWN LINE	Crackseal	3,868	92	\$3,990	874.12
OLD TAFT AVENUE	TAFT AVENUE	UXBRIDGE ROAD	Crackseal	698	92	\$360	349.65
SOUTHWICK STREET	TOWN LINE (N)	50' E OF ASYLUM STREET	Crackseal	1,510	92	\$1,168	349.65
THAYER ROAD	CATALPA LANE	DEAD END	Crackseal	2,794	92	\$1,681	349.65
<b>Year: 2023</b>							
BARROWS ROAD	CAPE ROAD	CUL DE SAC	Crackseal	813	92	\$1,243	349.65
BATES STREET	CAPE ROAD	BELLINGHAM STREET	Crackseal	3,021	92	\$2,701	349.65
BELLINGHAM STREET	150' E OF HARTFORD AVENUE	CARBY DRIVE	Crackseal	3,913	92	\$4,198	874.12
BELLINGHAM STREET	CARBY DRIVE	CAPE ROAD	Crackseal	3,592	92	\$3,853	874.12
CALUMET CIRCLE	KING PHILLIP PATH	CUL DE SAC LOOP	Crackseal	297	92	\$345	349.65
DANIELS ROAD	NECK HILL ROAD E	NECK HILL ROAD (W)	Crackseal	2,695	92	\$3,252	349.65
HARTFORD AVENUE EAST	WARFIELD ROAD	NECK HILL ROAD	Crackseal	2,029	92	\$1,995	874.12
HOPEDALE STREET	460' EAST OF TRASK ROAD	TOWN LINE	Crackseal	1,387	92	\$1,487	349.65
LOWELL DRIVE	NORTHBRIDGE ROAD	CUL DE SAC	Reclaim & Pave 4" HMA	621	36	\$60,324	43.54
MARY DRIVE	BELLINGHAM STREET	CUL DE SAC	Reclaim & Pave 4" HMA	1,057	36	\$138,863	43.54
MILLBROOK DRIVE	BELLINGHAM STREET	CUL DE SAC	Reclaim & Pave 4" HMA	700	36	\$78,945	43.54
MISCOE ROAD	NORTH AVENUE	DAVENPORT ROAD	Reclaim & Pave 4" HMA	520	36	\$33,573	43.54
MOWRY STREET	UXBRIDGE STREET	90' N OF SANDRA CIRCLE (S)	Crackseal	1,219	92	\$1,089	349.65
MOWRY STREET	90' N OF SANDRA CIRCLE (S)	630' S OF SANDRA CIRCLE (S)	Crackseal	717	92	\$641	349.65
MOWRY STREET	630' S OF SANDRA CIRCLE (S)	PARK STREET	Crackseal	1,729	92	\$1,391	349.65
NORTH AVENUE	150' N OF MAIN STREET	WESTERN CIRCLE AVENUE	Crackseal	1,946	92	\$2,784	874.12
NORTHBRIDGE STREET	FOREST PARK DRIVE	LOWELL DRIVE	Crackseal	2,088	92	\$2,053	874.12
PARK STREET	FREEMAN PLACE	330' W OF PLEASANT STREET	Reclaim & Pave 4" HMA	3,615	35	\$274,589	44.78
PINE NEEDLE DRIVE	COLONIAL DRIVE	DEAD END	Reclaim & Pave 4" HMA	970	36	\$99,465	43.54
THORNTON STREET	UXBRIDGE ROAD	HARTFORD AVENUE WEST	Crackseal	2,850	92	\$2,293	349.65
TRASK ROAD	HOPEDALE STREET	DEAD END	Crackseal	848	92	\$682	349.65

**Year: 2024**

**Scenario: Improve PCI \$973K**

<u>Street Name</u>	<u>From</u>	<u>To</u>	<u>Alternative</u>	<u>Length (ft)</u>	<u>PCI</u>	<u>Repair Cost</u>	<u>Benefit Value</u>
CARBY DRIVE	BELLINGHAM STREET	TERESA DRIVE	Reclaim & Pave 4" HMA	458	36	\$54,274	43.54
CEMETERY STREET	HARTFORD AVENUE EAST	PROVIDENCE STREET	Crackseal	2,495	90	\$2,552	892.85
COLONIAL DRIVE	PUDDINGSTONE LANE	DEAD END	Reclaim & Pave 4" HMA	3,972	34	\$423,666	46.10
CROSS STREET	WOOD DR (N)	WOOD DRIVE (S)	Crackseal	162	92	\$196	349.65
FREEMAN PLACE	PARK STREET	CUL DE SAC	Crackseal	675	92	\$1,048	349.65
HARRINGTON STREET	MILFORD STREET	DEAD END	Reclaim & Pave 4" HMA	552	35	\$39,248	44.78
HARTFORD AVENUE EAST	400' E OF PROVIDENCE STREET	WARFIELD ROAD	Crackseal	3,565	92	\$3,646	874.12
HOPEDALE STREET	NORTH AVENUE	460' EAST OF TRASK ROAD	Crackseal	1,815	92	\$2,026	349.65
KINSLEY LANE (EXT)	KINSLEY LANE	DEAD END	Crackseal	727	92	\$406	349.65
LEONE LANE	LOWELL DRIVE	CUL DE SAC	Crackseal	333	92	\$310	349.65
MASSASOIT WAY	PROVIDENCE STREET	CUL DE SAC LOOP	Crackseal	1,929	92	\$2,332	349.65
NIPMUC DRIVE	UXBRIDGE ROAD	PARK STREET	Reclaim & Pave 4" HMA	616	35	\$48,665	44.78
NORTH AVENUE	WESTERN CIRCLE AVENUE	ESTY ROAD	Crackseal	3,182	92	\$4,142	874.12
NORTH AVENUE	MISCOE ROAD	TOWN LINE	Crackseal	2,682	92	\$3,117	874.12
PARK STREET	NIPMUC DRIVE	FREEMAN PLACE	Reclaim & Pave 4" HMA	1,510	34	\$119,283	46.10
PARK STREET	330' W OF PLEASANT STREET	TOWN LINE	Crackseal	2,660	92	\$2,473	349.65
PLEASANT STREET	800' W OF MILLVILLE STREET	PARK STREET	Crackseal	3,973	92	\$4,248	349.65
PLEASANT STREET	MILLVILLE STREET	800' W OF MILLVILLE STREET	Crackseal	801	92	\$782	349.65
POWERS ROAD	NORTH AVENUE	TOWN LINE	Crackseal	897	92	\$709	349.65
PROVIDENCE STREET	510' N OF HARTFORD AVENUE E	280' S OF HARTFORD AVENUE E	Crackseal	790	92	\$1,102	874.12
PROVIDENCE STREET	280' S OF HARTFORD AVENUE E.	ASHKINS DRIVE	Crackseal	2,665	92	\$3,469	874.12
PROVIDENCE STREET	ASHKINS DRIVE	KING PHILLIP PATH	Crackseal	1,957	92	\$2,548	874.12
PROVIDENCE STREET	KING PHILLIP PATH	DEER HILL DRIVE	Crackseal	3,544	92	\$4,613	874.12
PROVIDENCE STREET	DEER HILL DRIVE	TOWN LINE	Crackseal	2,985	92	\$3,886	874.12
QUISSETT ROAD	PROVIDENCE STREET	DEAD END	Crackseal	4,342	92	\$3,633	349.65
<b>Year: 2025</b>							
BICKNELL DRIVE	240' N OF NECK HILL ROAD	NECK HILL ROAD	Reclaim & Pave 4" HMA	240	44	\$25,636	35.63
BLUEBERRY DRIVE	VINCENT ROAD €	VINCENT ROAD (W)	Crackseal	2,954	92	\$3,570	349.65
CADMAN ROAD	NORTHBRIDGE ROAD	800' S OF LEONARD ROAD	Crackseal	2,331	92	\$2,817	349.65
CADMAN ROAD	800' S OF LEONARD ROAD	LEONARD ROAD	Reclaim & Pave 4" HMA	801	34	\$85,595	46.10
JOSEPH ROAD	EDWARD ROAD	CUL DE SAC	Crackseal	395	92	\$795	349.65
MAIN STREET	MAPLE STREET	250' S OF MAPLE STREET	Reclaim & Pave 4" HMA	248	36	\$30,600	43.54
MAIN STREET (Y INT)	MAIN STREET	MILFORD STREET	Crackseal	208	92	\$261	349.65
MORRISON DRIVE (EXT)	MORRISON DRIVE	CUL DE SAC	Crackseal	360	92	\$681	349.65

**Scenario: Improve PCI \$973K**

<u>Street Name</u>	<u>From</u>	<u>To</u>	<u>Alternative</u>	<u>Length (ft)</u>	<u>PCI</u>	<u>Repair Cost</u>	<u>Benefit Value</u>
NELSON COURT	BLUEBERRY DRIVE	CUL DE SAC	Reclaim & Pave 4" HMA	779	36	\$101,996	43.54
NORTH AVENUE	ETSY ROAD	MISCOE ROAD	Crackseal	3,595	92	\$4,345	874.12
OAK HILL ROAD	NECK HILL ROAD	CUL DE SAC	Reclaim & Pave 4" HMA	721	34	\$91,239	46.10
PUDDINGSTONE LANE	PINE NEEDLE DRIVE	COLONIAL DRIVE	Reclaim & Pave 4" HMA	2,301	34	\$255,214	46.10
SPRINGBROOK COURT	BLACKSTONE STREET	CUL DE SAC	Reclaim & Pave 4" HMA	817	34	\$105,898	46.10
TOWER ROAD	MILLVILLE STREET	DEAD END	Crackseal	965	92	\$746	349.65
VINCENT ROAD	750' N OF BUTLER ROAD	BUTLER ROAD	Crackseal	750	92	\$906	349.65
WASHINGTON STREET	HASTINGS STREET	2500' N OF HASTINGS STREET	Crackseal	2,500	92	\$2,901	349.65
WASHINGTON STREET	2500' N OF HASTINGS STREET	NORTHBRIDGE ROAD	Crackseal	3,024	92	\$3,509	349.65
WESLEY DRIVE	BLACKSTONE STREET	KELLEY ROAD	Crackseal	1,717	92	\$2,158	349.65
WEST HILL ROAD	870' E OF TOWN LINE	TOWN LINE	Crackseal	869	92	\$840	349.65

**Improve PCI \$973K**

**68.75 Miles \$ 8,859,029**





# Appendix I

## Crackseal Candidates

A list of roads in the database with Moderate to Extensive Transverse, Longitudinal, and/or Block Cracking with a PCI between 75 and 92.

# Crackseal Candidate List

<u>Street Name</u>	<u>From Segment</u>	<u>To Segment</u>	<u>Length (ft)</u>	<u>PCI</u>
ASYLUM STREET	PLEASANT STREET	300' S OF PLEASANT STREET	301	78
ASYLUM STREET (Y INT)	PLEASANT STREET	ASYLUM STREET	118	75
BATES STREET	BELLINGHAM STREET	THAYER ROAD	3,888	85
BATES STREET	THAYER ROAD	TOWN LINE	1,127	85
BICKNELL DRIVE	240' N OF NECK HILL ROAD	NECK HILL ROAD	240	77
BLACKSTONE STREET	MAIN STREET	WESLEY DRIVE	2,335	76
BLUEBERRY DRIVE	VINCENT ROAD €	VINCENT ROAD (W)	2,954	87
CADMAN ROAD	NORTHBRIDGE ROAD	800' S OF LEONARD ROAD	2,331	80
CATALPA LANE	THAYER ROAD	CUL DE SAC	719	77
CEMETERY STREET	HARTFORD AVENUE EAST	PROVIDENCE STREET	2,495	75
CEMETERY STREET	HARTFORD AVENUE EAST	PROVIDENCE STREET	2,495	75
CRANBERRY COURT	BLUEBERRY DRIVE	CUL DE SAC	785	77
CRESTVIEW DRIVE	GEORGE STREET	2500' N OF GEORGE ST	2,500	75
CRESTVIEW DRIVE	2500' N OF GEORGE ST	MANTONI DRIVE	2,918	75
DAVENPORT ROAD	MISCOE ROAD	CUL DE SAC LOOP	1,020	76
ELM STREET	MAPLE STREET	HASTINGS STREET	664	75
ELM STREET	MAPLE STREET	HASTINGS STREET	664	75
HARTFORD AVENUE EAST	NECK HILL ROAD	500' E OF MENFI WAY	3,295	84
KINSLEY LANE (EXT)	KINSLEY LANE	DEAD END	727	88
LAPHAM COURT	BICKNELL DRIVE	CUL DE SAC LOOP	842	76
LAPHAM COURT	BICKNELL DRIVE	CUL DE SAC LOOP	842	76
LORI LANE	SANDRA CIRCLE	CUL DE SAC	465	77
LORI LANE	SANDRA CIRCLE	CUL DE SAC	465	77
LUNDVALL ROAD	ASHKINS DRIVE (N)	ASHKINS DRIVE (S)	2,125	75
LUNDVALL ROAD	ASHKINS DRIVE (N)	ASHKINS DRIVE (S)	2,125	75
MAIN STREET	250' S OF MAPLE STREET	GEORGE STREET	625	76
MAIN STREET	250' S OF MAPLE STREET	GEORGE STREET	625	76
MASSASOIT WAY	PROVIDENCE STREET	CUL DE SAC LOOP	1,929	88
METCALF ROAD	MISCOE ROAD	CUL DE SAC LOOP	1,033	77
MILLVILLE STREET	UXBRIDGE ROAD	MILLVILLE STREET	433	76
MILLVILLE STREET	UXBRIDGE ROAD	MILLVILLE STREET	433	76
MISCOE ROAD	DAVENPORT ROAD	DEAD END	2,836	76
MORRISON DRIVE	PROVIDENCE STREET	CUL DE SAC	776	78
MORRISON DRIVE (EXT)	MORRISON DRIVE	CUL DE SAC	360	82
MORRISON DRIVE (EXT)	MORRISON DRIVE	CUL DE SAC	360	82
NECK HILL ROAD	325' E OF OAK HILL ROAD	1000' W OF HARTFORD AVE EAST	2,649	75
NECK HILL ROAD	1000' W OF HARTFORD AVE EAST	HARTFORD AVENUE EAST	1,042	75
NORTHBRIDGE STREET	NORTH AVENUE	FOREST PARK DRIVE	2,781	85
NORTHBRIDGE STREET	FOREST PARK DRIVE	LOWELL DRIVE	2,088	85
NORTHBRIDGE STREET	LOWELL DRIVE	TOWN LINE	3,868	84
NORTHBRIDGE STREET (Y	NORTHBRIDGE ROAD	NORTH AVENUE	155	88
UXBRIDGE ROAD	1300' W OF THORNTON STREET	350' E OF MOWRY STREET	408	80
UXBRIDGE ROAD	1300' W OF THORNTON STREET	350' E OF MOWRY STREET	408	80
VINCENT ROAD	750' N OF BUTLER ROAD	BUTLER ROAD	750	88

