

I HEREBY CERTIFY THAT BROOKVIEW ROAD HAS BEEN LAID OUT AND ALL THE MARKERS, BOUNDS, AND MONUMENTS HAVE BEEN SET AS SHOWN ON THIS PLAN. I HEREBY CERTIFY THAT THIS PLAN CONFORMS TO THE RULES AND REGULATIONS OF THE REGISTRY OF DEEDS OF THE COMMONWEALTH OF MASSACHUSETTS. THIS PLAN WAS PREPARED IN ACCORDANCE WITH THE PROCEDURAL AND TECHNICAL STANDARDS FOR THE PRACTICE OF LAND SURVEYING IN THE COMMONWEALTH OF MASSACHUSETTS.

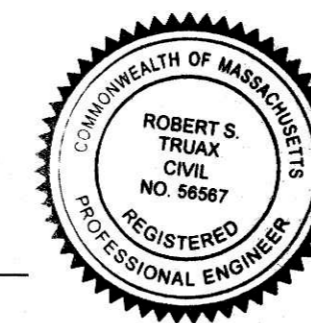


*J. Hastings*  
 JOYCE E. HASTINGS, P.L.S. DATE 9/2/22

I HEREBY CERTIFY THAT THIS PLAN SHOWS THE ACTUAL AS BUILT LOCATIONS, PROFILES AND ELEVATIONS OF THE ROADWAY, DRAINAGE FACILITIES, AND UTILITIES BASED UPON A FIELD SURVEY CONDUCTED BETWEEN OCTOBER 12, 2021 AND OCTOBER 15, 2021.

*J. Hastings*  
 JOYCE E. HASTINGS, P.L.S. DATE 9/2/22

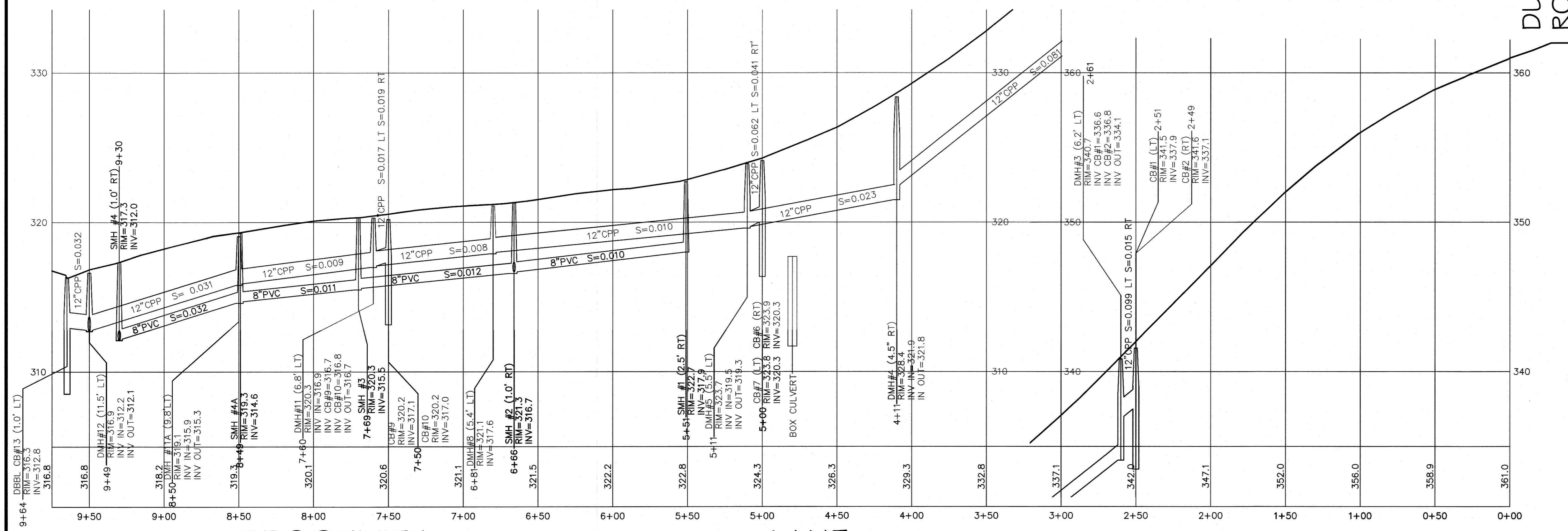
I HEREBY CERTIFY THAT THE STREETS, DRAINAGE, AND MUNICIPAL SERVICES SHOWN CONFORM TO THE PLANNING BOARD REQUIREMENTS IN ACCORDANCE WITH THE APPROVED DEFINITIVE PLAN.



*R. Truax*  
 ROBERT S. TRUAX, P.E. DATE 4/29/22

**LEGEND**

	CBDH (CONC. BND. W/ D.H.)
	DH (DRILL HOLE)
	CCB (CAPE COD BERM)
	SCC (SLOPED GRANITE CURB)
	VGC (VERTICAL GRANITE CURB)
	DRAIN LINE
	DRAINAGE MANHOLE
	CATCH BASIN
	SEWER LINE
	SEWER MANHOLE
	SS (SEWER STUB)
	ELECTRIC LINE
	UTILITY POLE
	TRANS (TRANSFORMER)
	CATV (CABLE)
	ELECTRIC BOX
	MAILBOX
	TREE (PINE, SPRUCE)
	TREE (MAPLE, OAK)
	WOODS LINE
	STONE WALL
	STREET LIGHT
	SIGN
	CONTOUR (EXISTING)
	SPOT ELEVATION (EXISTING)
	RIPRAP



MENDON ZONING BOARD \_\_\_\_\_

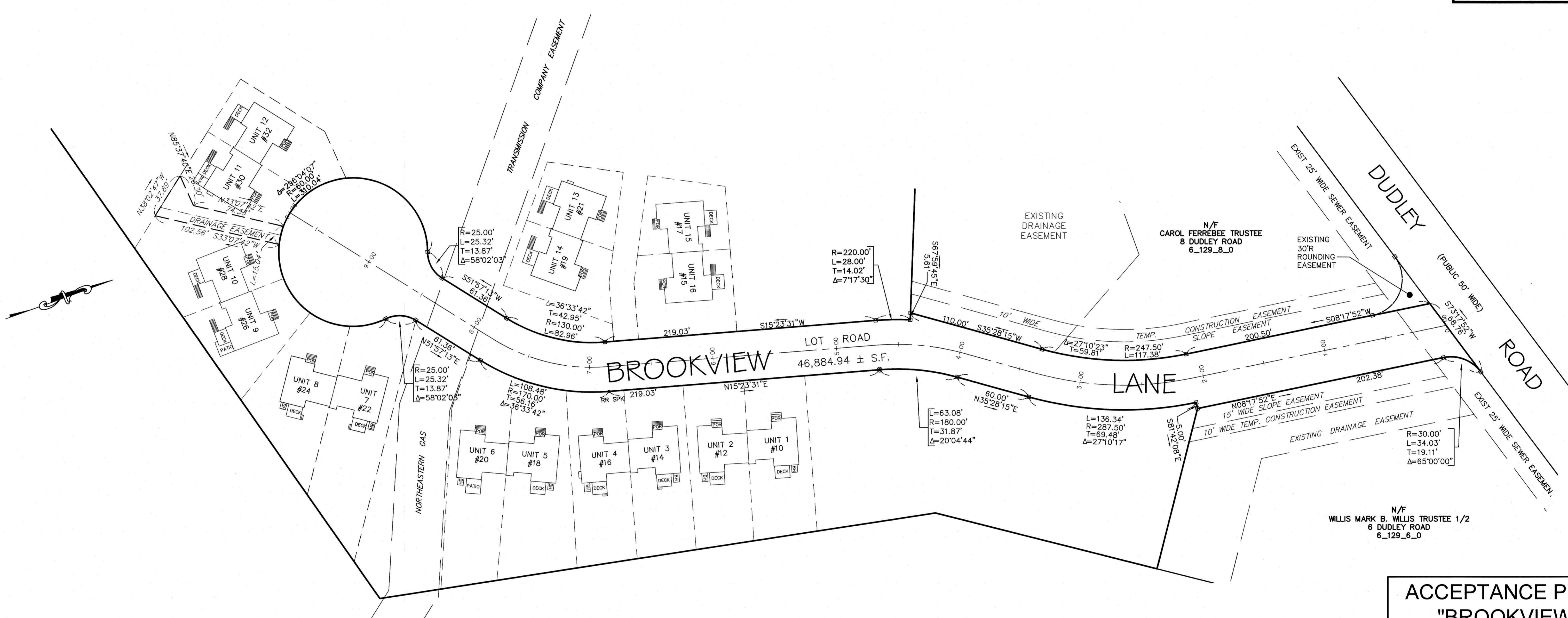
MENDON BOARD OF SELECTMEN \_\_\_\_\_

DATE: \_\_\_\_\_ DATE: \_\_\_\_\_

**ROAD AS-BUILT PLAN**  
**"BROOKVIEW ESTATES"**  
 STATION 0+00 TO STATION 9+75  
 MENDON, MA  
 FEB. 22, 2022  
 REV: 4/29/22  
 SCALE: VERT. 1"=4' HORIZ. 1"=40'  
 PREPARED FOR:  
 ALMIK CONSTRUCTION INC.  
 12 DUDLEY ROAD  
 MENDON, MA  
  
 19 EXCHANGE STREET  
 HOLLISTON, MA 01746  
 P:508-429-1100 F:508-429-7160  
 www.GLMengineering.com



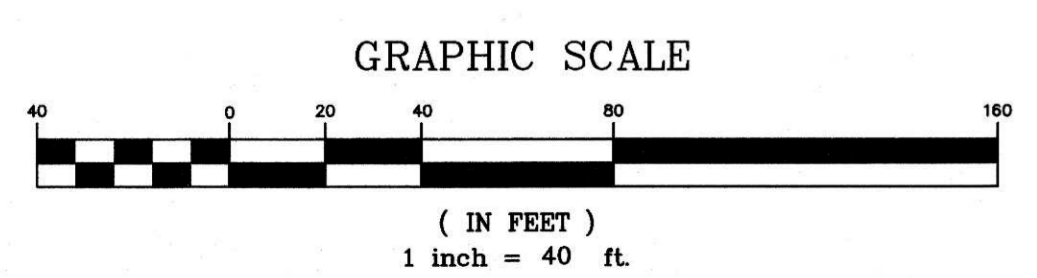
LEGEND  
 --- CBDH (CONC. BND. W/ D.H.)  
 --- DH (DRILL HOLE)



I HEREBY CERTIFY THAT BROOKVIEW ROAD HAS BEEN LAID OUT AND ALL THE MARKERS, BOUNDS, AND MONUMENTS HAVE BEEN SET AS SHOWN ON THIS PLAN. I HEREBY CERTIFY THAT THIS PLAN CONFORMS TO THE RULES AND REGULATIONS OF THE REGISTRY OF DEEDS OF THE COMMONWEALTH OF MASSACHUSETTS. THIS PLAN WAS PREPARED IN ACCORDANCE WITH THE PROCEDURAL AND TECHNICAL STANDARDS FOR THE PRACTICE OF LAND SURVEYING IN THE COMMONWEALTH OF MASSACHUSETTS.



*Joyce E. Hastings*  
 JOYCE E. HASTINGS, P.L.S. DATE 5/2/22



MENDON ZONING BOARD \_\_\_\_\_  
 \_\_\_\_\_  
 \_\_\_\_\_  
 DATE: \_\_\_\_\_

MENDON BOARD OF SELECTMEN \_\_\_\_\_  
 \_\_\_\_\_  
 \_\_\_\_\_  
 DATE: \_\_\_\_\_

**ACCEPTANCE PLAN**  
**"BROOKVIEW ESTATES"**  
 STATION 0+00 TO STATION 9+75  
**MENDON, MA**

FEB. 22, 2022  
 REV: 4/29/22  
 HORZ. 1"=40'

PREPARED FOR:  
**ALMIK CONSTRUCTION INC.**  
 12 DUDLEY ROAD  
 MENDON, MA

**GLM Engineering Consultants, Inc.**  
 19 EXCHANGE STREET  
 HOLLISTON, MA 01746  
 P:508-429-1100 F:508-429-7160  
 www.GLEngineering.com

JOB NO.: 13342-RDASB SHEET 1 OF 1 PLAN NO. 27,539