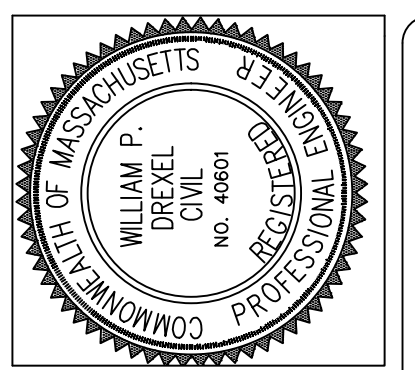


N/F
ARTHUR F. JR.
&
LAURITA PADDOCK

SUGRUE & ASSOC., INC.
CIVIL ENGINEERS & LAND SURVEYORS
9 THURBER BLVD-SUITE A
SMITHFIELD, R.I. 02917
(401) 647-3890 FAX (401) 647-7067



REV. NO.	DATE	REVISION	MADE BY	CHECK BY	DATE

SITE PLAN I
MENDON INDUSTRIAL FLEX SPACE
5 MORRISON DRIVE, MENDON, MA.
FOR
MPG CAPITAL, LLC
DATE: MAY 16, 2021

SCALE: 1" = 40'