

N/F  
ARTHUR F. JR.  
&  
LAURITA PADDOCK

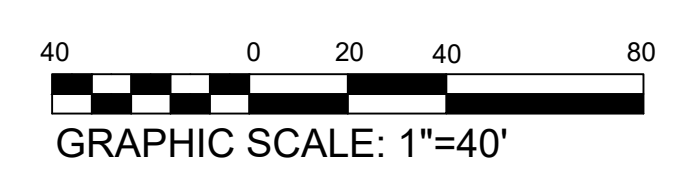
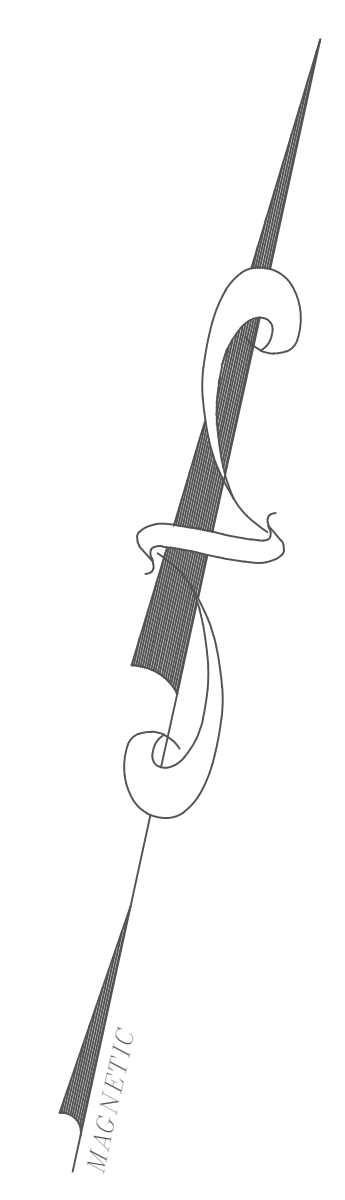
**LOT 5**  
(N/F) TELLSTONE CLAYTON JR.  
& KAREN E.  
167,257 SF.± OR 3.77 ACRES ±

LOT 12-206-39  
ZONE: RESIDENTIAL 60,000 SF MIN

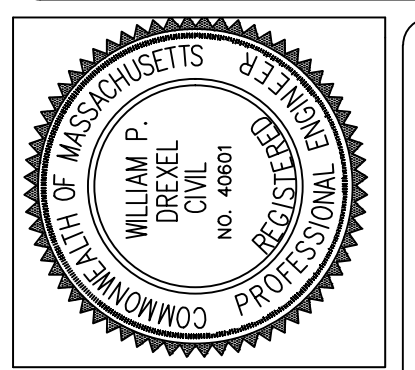
LOT 17-206-73

**LOT 3**  
(N/F) ARCUDI JOHN L.  
205,873 SF.± OR 4.73 ACRES ±

**LOT 1**  
(N/F) GRAY JAMES  
& SUSAN TRUSTEES  
533,931 SF.± OR 12.26 ACRES ±



SUGRUE & ASSOC., INC.  
CIVIL ENGINEERS & LAND SURVEYORS  
**9 THURBER BLVD-SUITE A**  
**SMITHFIELD, R.I. 02917**  
(401) 647-3890 FAX (401) 647-7067



REV. NO.	DATE	REVISION	MADE BY	CHECK BY	APPD. BY

**DRAINAGE AND UTILITY PLAN I**  
**MENDON INDUSTRIAL FLEX SPACE**  
5 MORRISON DRIVE, MENDON, MA.  
FOR  
**MPG CAPITAL, LLC**  
DATE: MAY 16, 2021

SCALE: 1" = 40'