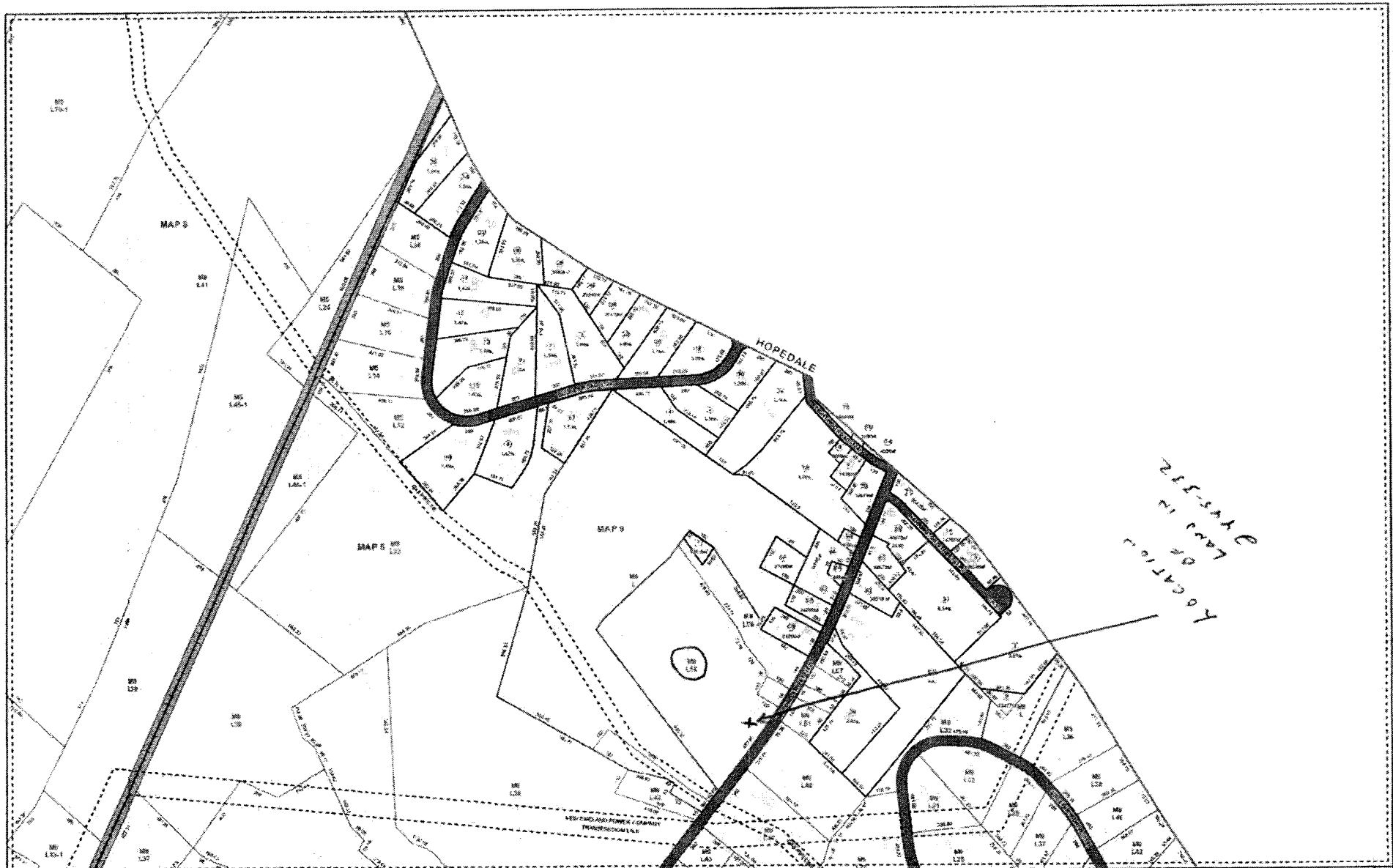


2

Assessor's

Location  
of  
Land  
in  
District



**LEGEND**

HIGHLIGHT PARCEL	RIGHT OF WAY	WATER BODIES
EASEMENT	PRIVATE ROAD	STREAM
TOWN BOUNDARY	PAVED ROAD	MASS DEP. W/TH/AND
STRUCTURES		

**NOTE**

THE AREAS, BOUNDARIES AND DIMENSIONS SHOWN ON THIS TAX MAP ARE DERIVED FROM AERIAL PHOTOGRAPHS, GROUND SURVEYS AND REGISTERED PLATS, MAPS, DEEDS AND WILLS AND ARE TO BE USED FOR TAX ASSESSMENT PURPOSES ONLY AND NOT FOR CONVEYANCE.

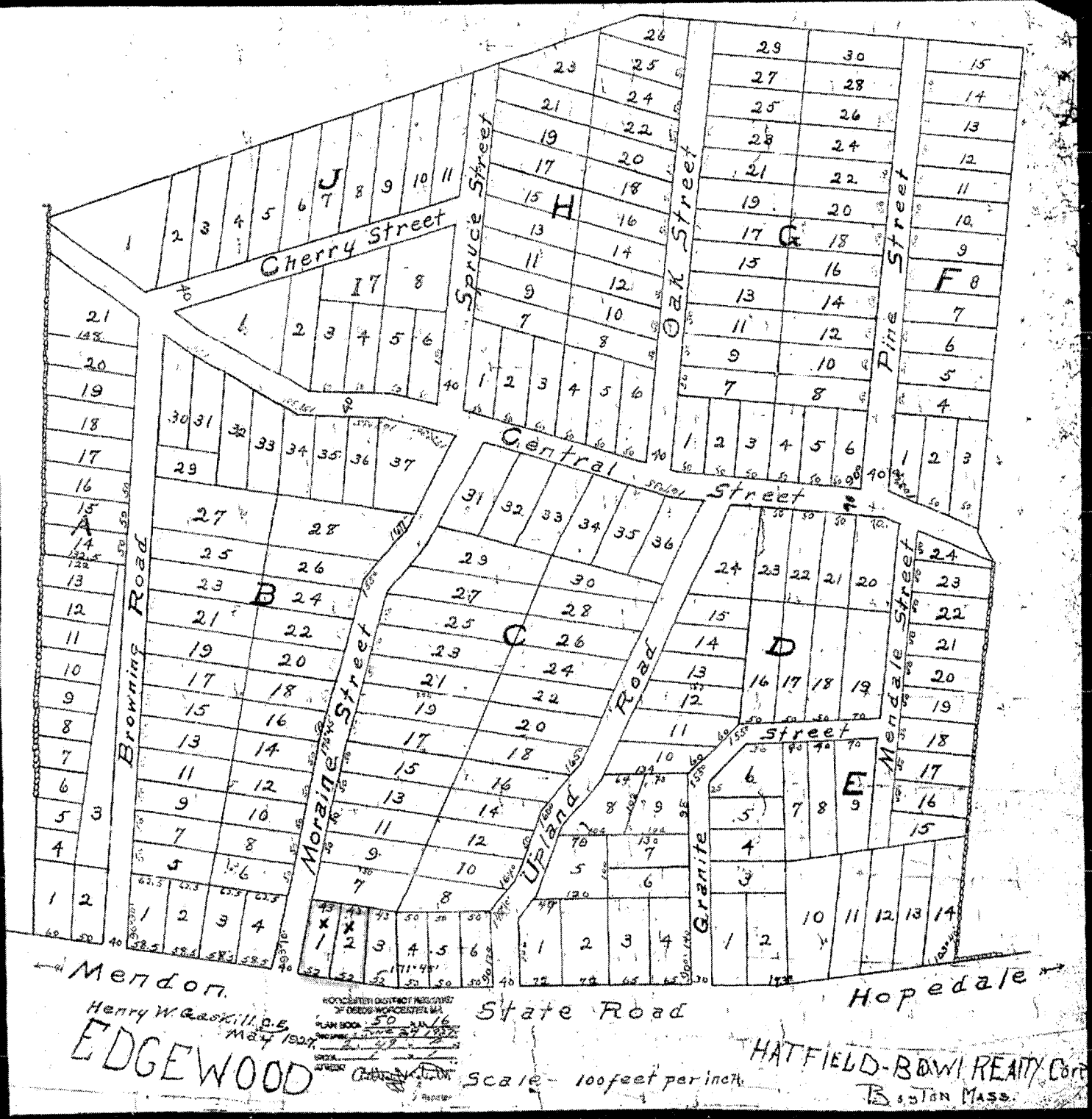
PRODUCED IN 2020 BY  
  
 ONE MERCANTILE STREET, SUITE 523  
 WORCESTER, MA 01098  
 REVISED TO: JANUARY 1, 2021

**ASSESSORS TAX MAP**  
**TOWN OF MENDON**  
 WORCESTER COUNTY, MASSACHUSETTS

SCALE 1 in = 200 feet

0	0
1	6
2	0

50/16



Henry W. Gaskill, P.E.

EDGEWOOD

Worcester District No. 10  
 OF THE COMMONWEALTH OF MASSACHUSETTS  
 PLAN BOOK 50 JAN 16  
 ENGINEER'S LICENSE 27192  
 STATE OF MASSACHUSETTS  
 REGISTERED PROFESSIONAL ENGINEER

State Road

Scale - 100 feet per inch

HATFIELD-BOWI REALTY CORP  
 Boston Mass.