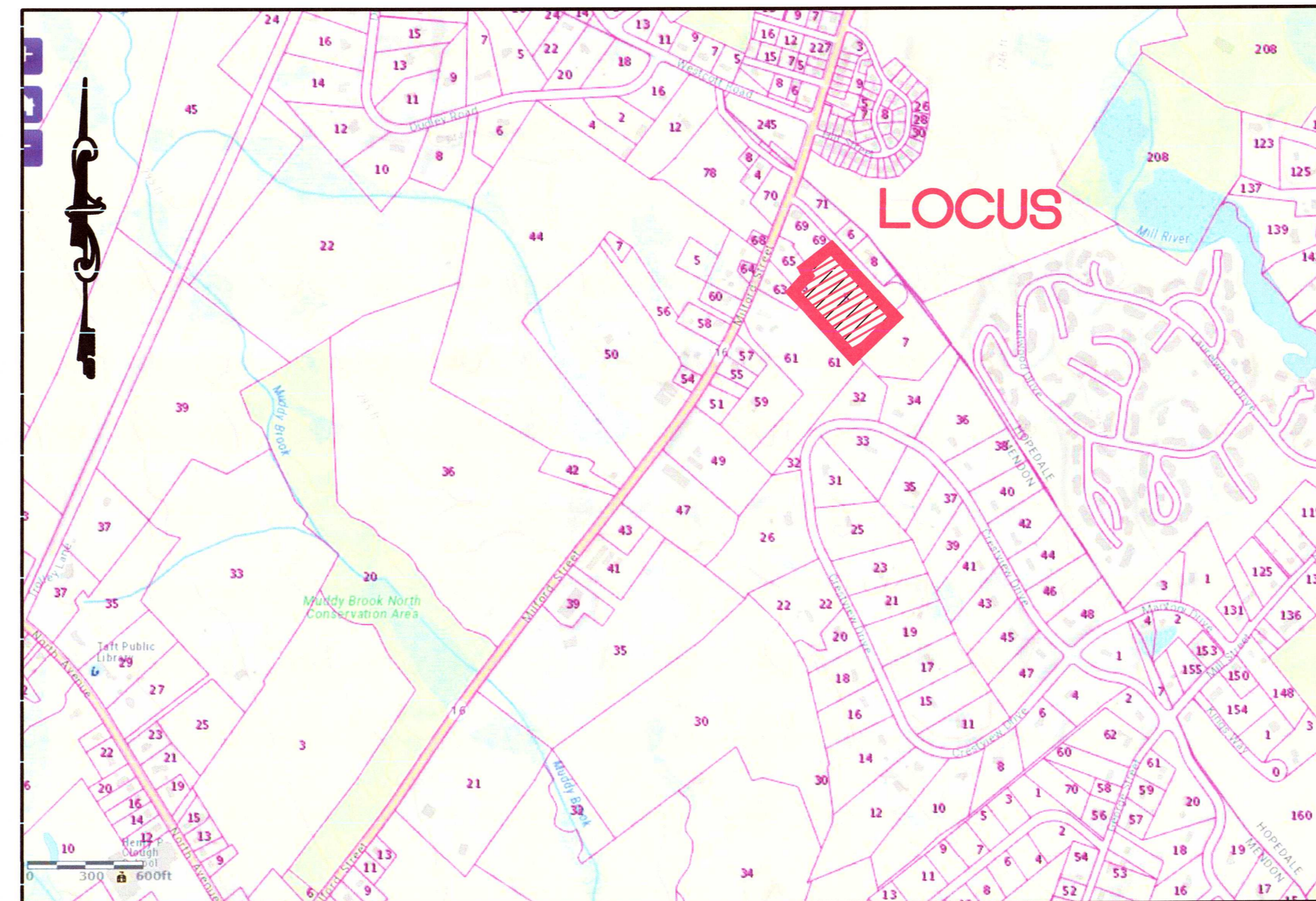


AMENDED HARRINGTON STREET STORAGE

5 HARRINGTON STREET,
MENDON, MASSACHUSETTS

PLANS DATED: JULY 9, 2020



LOCUS MAP
SCALE: 600 FEET TO AN INCH

ZONING TABLE

INTENSITY OF USE ZONE GB	REQUIRED	EXISTING	PROPOSED
MIN. LOT REQUIREMENTS			
LOT AREA (S.F.)	40,000 S.F.	150,006± S.F.	150,006± S.F.
LOT WIDTH (FT)	200 FT.	501.88 FT.	501.88 FT.
FRONTAGE (FT)	200 FT.	355.09 FT.	355.09 FT.
MIN. YARD REQUIREMENTS			
FRONT YARD SETBACK (FT)	50 FT.	NA	NA
SIDE YARD SETBACK (FT)	20 FT.	NA	NA
REAR YARD SETBACK (FT)	20 FT.	NA	NA
MAXIMUM BUILDING SIZE			
BUILDING COVERAGE (% OF LOT)	30%	NA	NA
HEIGHT REQUIREMENTS			
MAX. HEIGHT (FT)	35 FT.	NA	NA
MAX. NO. OF STORIES	2.5	NA	NA
PARKING REQUIREMENTS			
TOTAL PARKING SPACES 12'X61'	0	0	70

OWNER/APPLICANT:
DETERMINATION, INC.
P.O. BOX 444
MENDON, MA 01756
508-422-1050



**Guerriere
&
Halnon, Inc.**

Engineering & Land Surveying
333 WEST STREET, MILFORD, MASS. 01757
(508) 473-6630 FAX: (508) 473-8243

PLAN INDEX:

- SHEET 1 - COVER SHEET
- SHEET 2 - EXISTING CONDITIONS PLAN
- SHEET 3 - OVERALL SITE PLAN
- SHEET 4 - LIGHTING PLAN