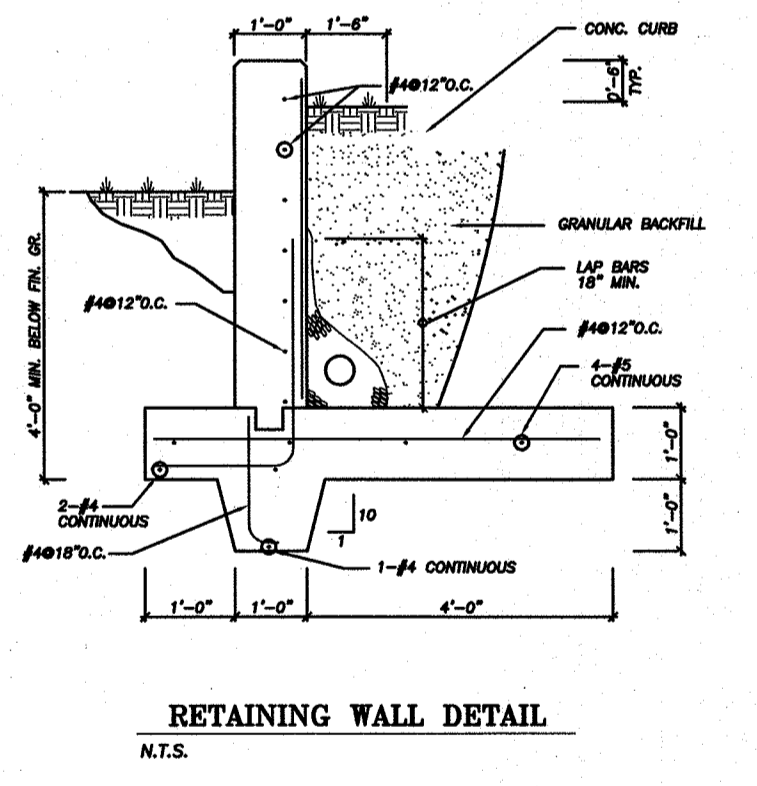
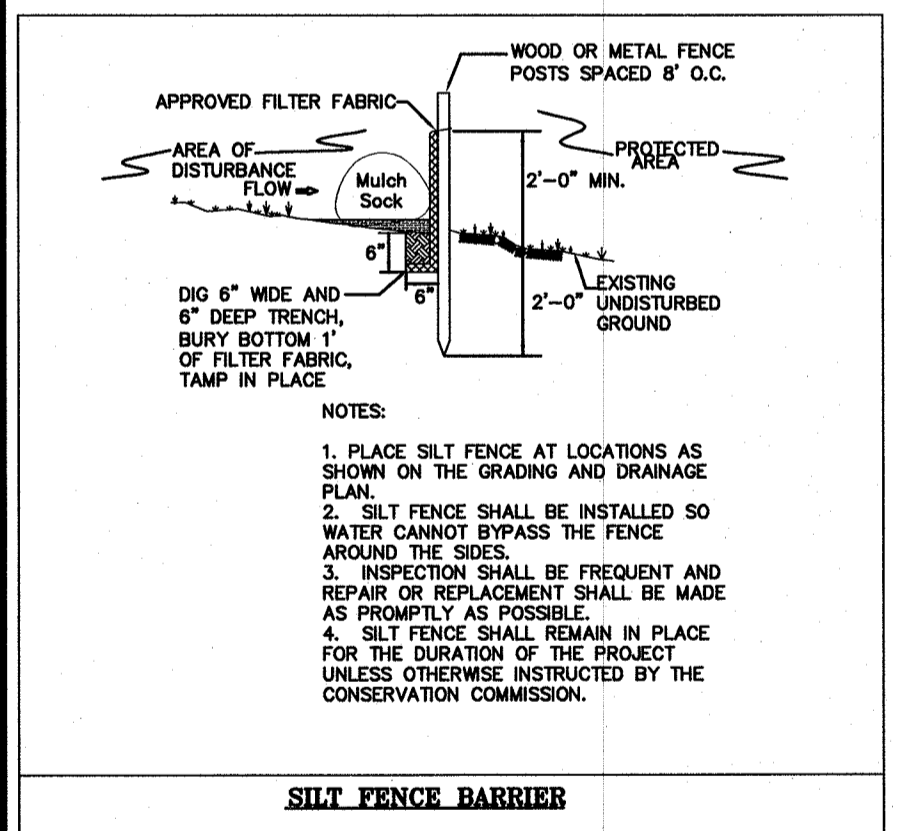
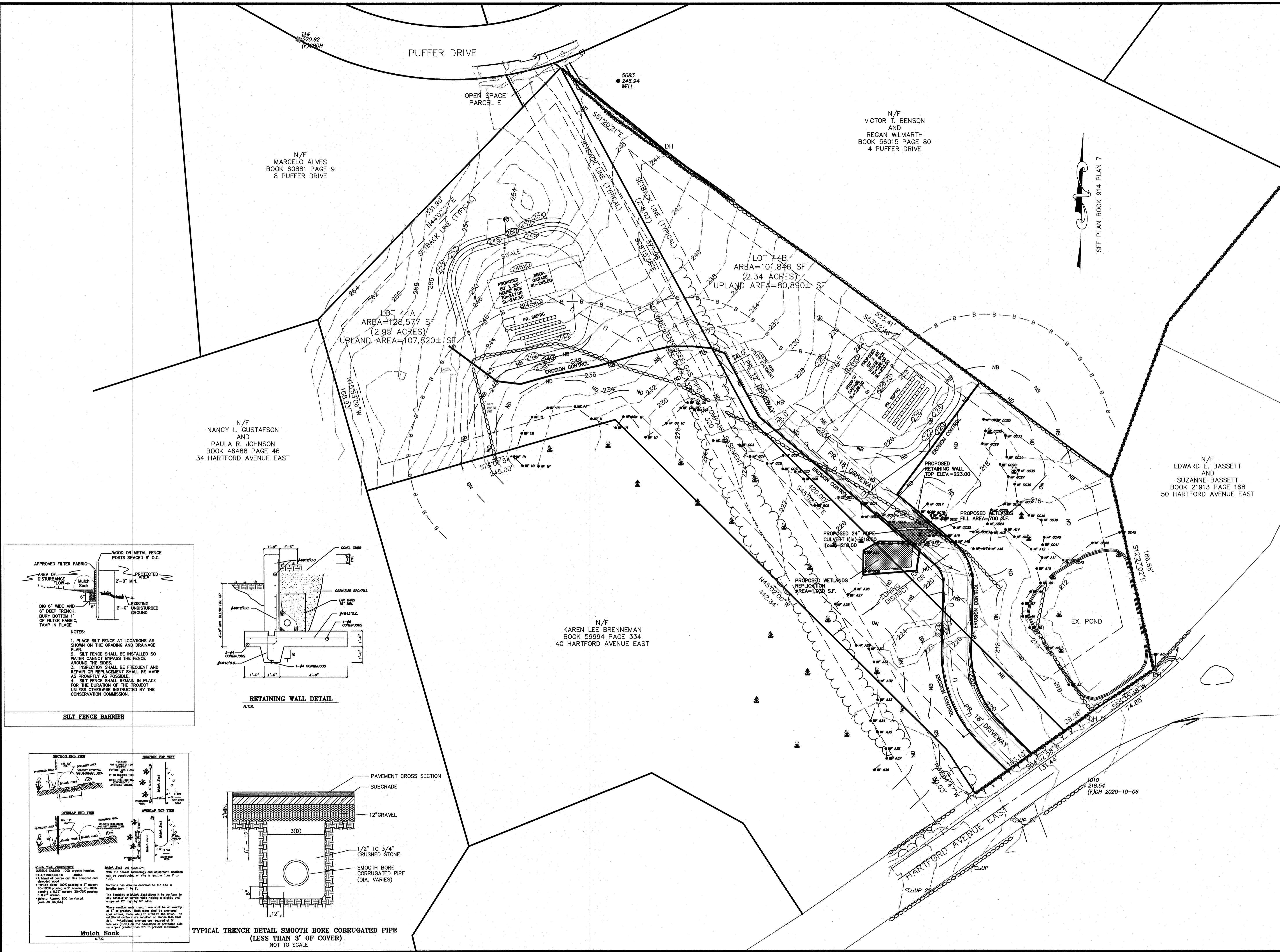




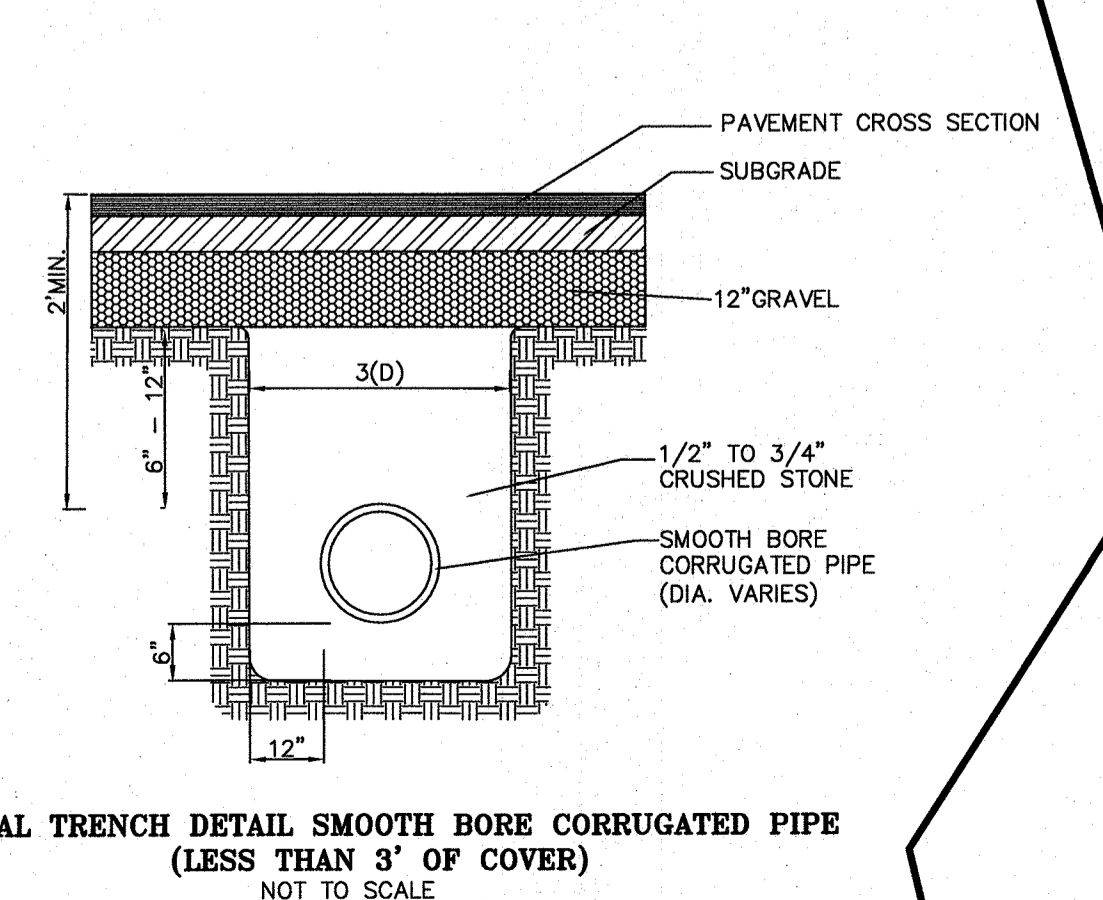
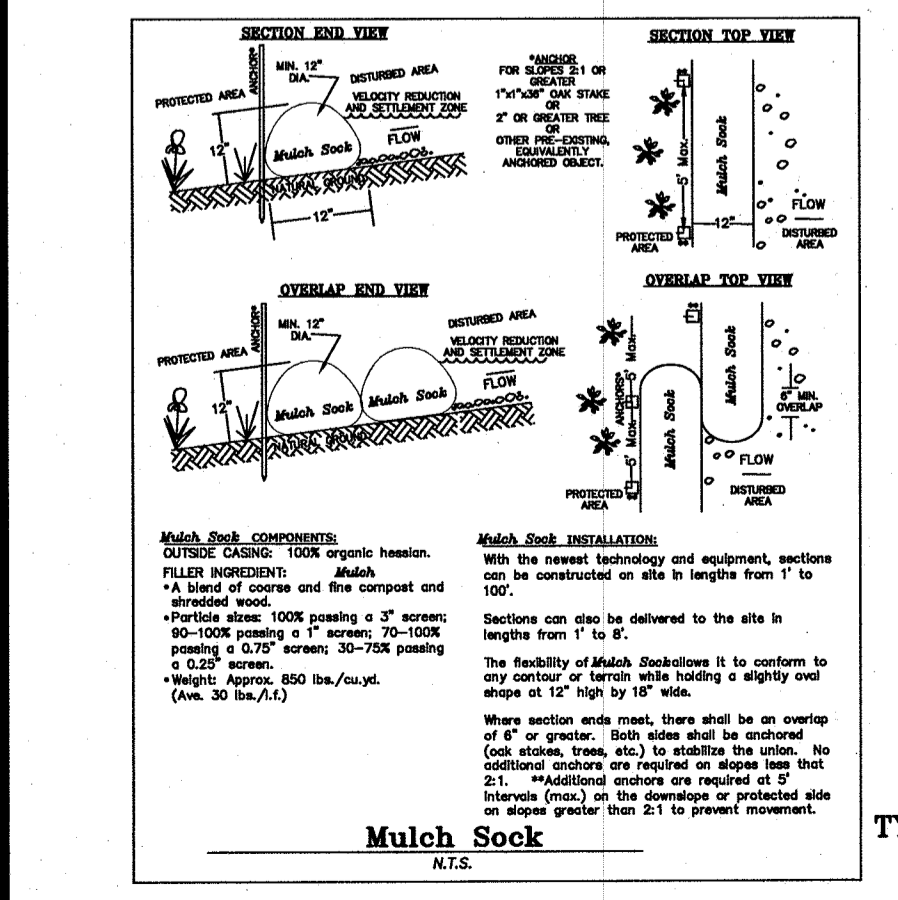
- CONSTRUCTION ON THIS LOT IS SUBJECT TO ANY EASEMENTS, RIGHTS-OF-WAY RESTRICTIONS, RESERVATIONS OR OTHER LIMITATIONS WHICH MAY BE REVEALED BY AN EXAMINATION OF THE TITLE.
- "WARNING" EXISTING UTILITY LINES INDICATED OR NOTED ON THESE DRAWINGS ARE SHOWN AS OBTAINED FROM EXISTING INFORMATION AND ARE ONLY APPROXIMATE IN LOCATION. THE CONTRACTOR SHALL TAKE CAUTION IN THESE AREAS TO AVOID DAMAGE TO EXISTING UTILITY LINES AND/OR HARM TO PERSONNEL ENGAGED IN WORKING IN THESE AREAS. CALL "DIG SAFE" 1-888-DIG-SAFE (1-888-344-7233). EXISTING LINES OTHER THAN THOSE INDICATED ON THESE DRAWINGS MAY BE ON THE SITE. THE CONTRACTOR IS WARNED TO PROCEED WITH CAUTION WITH ALL WORK, ESPECIALLY EXCAVATION WORK, AND TO MAKE ALL POSSIBLE INVESTIGATIONS AS TO POSSIBLE UNMARKED UTILITY LINES.
- WETLANDS DELINEATION BY GODDARD CONSULTING ON SEPTEMBER 23, 2020. WETLANDS FLAGS FIELD LOCATED BY GUERRIERE & HALNON, INC.

LEGEND

- 000--- EXISTING ELEVATION CONTOUR
- - - - - Ex. WETLANDS LINE
- WF-61 WETLANDS FLAG
- B Ex. WETLANDS 100' BUFFER
- NB Ex. 50' NO BUILD BUFFER
- ND Ex. 25' NO DISTURB BUFFER
- WETLANDS SYMBOL
- PR. EROSION CONTROL
- PR. WETLANDS FILL
- PR. WETLANDS REPLICATION
- PR. UNDERGROUND ELECTRIC TELEPHONE AND CABLE

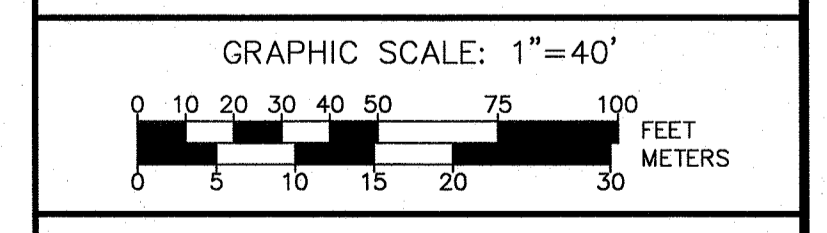


RETAINING WALL DETAIL
N.T.S.



OWNER:
TAX MAP 18 BLOCK 140 LOT 44
HARTFORD EAST CORP.
P.O. BOX 281
MENDON, MA 01756
DEED BOOK 62019 PAGE 268

RESOURCE AREA PLAN
44 HARTFORD AVENUE EAST
MENDON, MASS.
SCALE: 1"=40'
DATE: OCTOBER 20, 2020



Guerriere & Halnon, Inc.
ENGINEERING & LAND SURVEYING
333 WEST STREET PH. (508) 473-6630
MILFORD, MA 01757 FX. (508) 473-8243
www.gandhengineering.com