

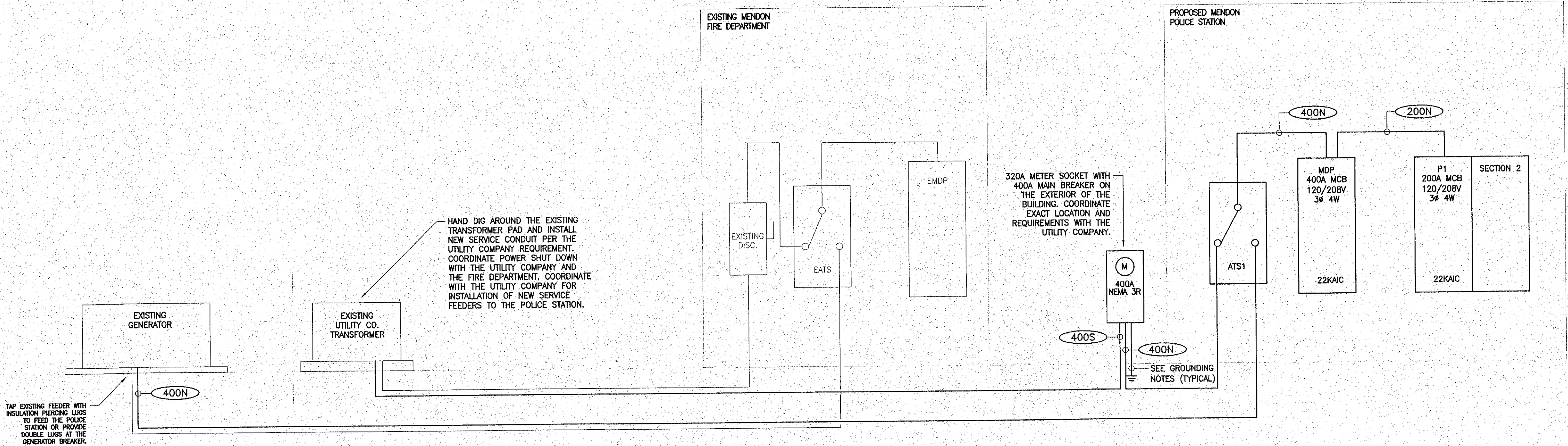
NTS

FEEDER SCHEDULE - COPPER

FEEDER SYMBOL	COPPER CONDUCTORS	CONDUIT	NOMINAL AMPERE RATING
200N	4-3/0 AWG & 1-6 AWG GND	2-1/2"	200
400N	4-600 KCMIL & 1-3 AWG GND	4"	400
400S	4-600 KCMIL	4"	400

DISTRIBUTION NOTES

1. SWITCHGEAR AND PANELBOARDS SHALL BE MANUFACTURED BY SQUARE D, SIEMENS, GENERAL ELECTRIC OR CUTLER-HAMMER.
2. THIS CONTRACTOR SHALL VERIFY THE AVAILABLE SHORT CIRCUIT CURRENT FOR THE MAIN SERVICE WITH THE UTILITY COMPANY. THE ELECTRICAL DISTRIBUTION SYSTEM SHALL BE RATED FOR THE AVAILABLE SHORT CIRCUIT CURRENT OR AS NOTED ON THE DRAWINGS.
3. THE ENTIRE SYSTEM SHALL BE RATED AND COORDINATED FOR THE AVAILABLE SHORT CIRCUIT CURRENT.
4. PROVIDE HACR CIRCUIT BREAKERS FOR ALL HVAC EQUIPMENT.
5. SEE FEEDER SCHEDULE FOR PANEL FEEDER SIZES, UNLESS NOTED OTHERWISE.

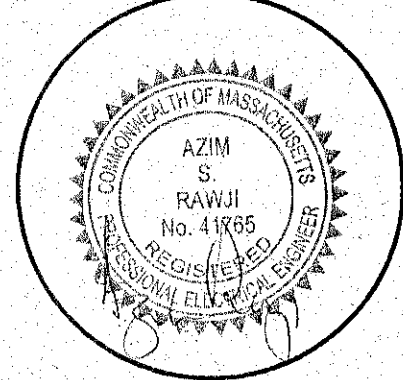


R.C. Searles Associates

Exclusive Home Designers
Design / Build

Phone No. 17 Glenwood St.
(508) 466-3202 Holden Ma.

CONSULTING ARCHITECT
J THOMAS REARDON
7 SUNSET DRIVE
NORTHBOROUGH MA
01532



ELECTRICAL
DISTRIBUTION RISER

DATE: 12/21/12

SCALE: NTS

DRAWN BY: NAJ

CHECKED BY: AR

Sheet 19 OF 25

E12

76 Webster Street
Worcester, MA 01603
508-797-0333 Phone
508-458-4111 Fax
www.engineering.us

